



TELEVISION CENTRE
H.713

TELEVISION CENTRE

A generous newly built two-bedroom duplex apartment located on the top floor of the reimagined Television Centre in W12. This 1,973 sq ft / 183 sq m dual-aspect home designed by Coffey Architects has high ceilings and abundant natural light, terrazzo flooring with inset brass detailing, comfort cooling and two roof terraces.

A GRADE-II LISTED CULTURAL LANDMARK
WITH LUXURY AMENITIES



Television Centre, the iconic former headquarters of the BBC, has been transformed into a new West London destination. Live inside a London landmark, with cafes and restaurants, working TV studios and Westfield London on your doorstep.

Residents also benefit from amenities, including 24 hour concierge, residents' lounge with co-working space, meeting and screening rooms and a huge gymnasium with swimming pool and hammam managed by Soho House – who have a members' club, 47-bedroom hotel, Electric Cinema and restaurant on site.

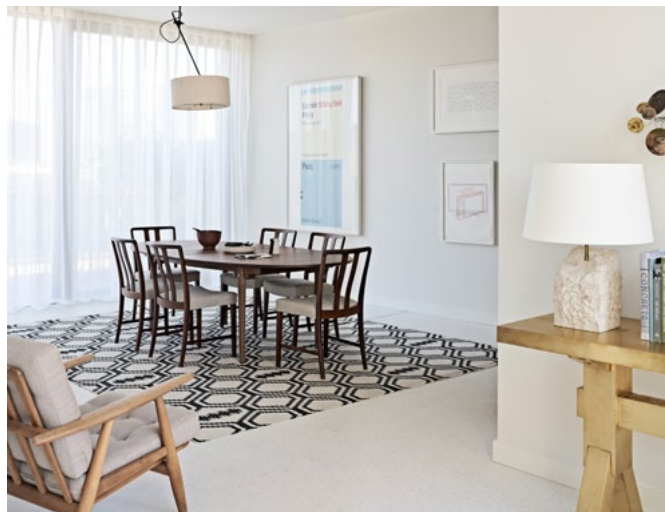
APARTMENT
H.713

The contemporary design by Coffey Architects combines two bedrooms on the lower floor with a flexible, broken-plan dual aspect living/ dining/ kitchen area above with dual roof terraces.

- Master bedroom with dressing room and ensuite bathroom
- One further double bedroom with fitted wardrobes
- Terrazzo flooring to main rooms with inset brass detail, carpets to bedrooms
- Molteni C & Dada Italian kitchen with marble splashback and worktops, Miele appliances
- Utility room with Miele appliances and hot water tap
- Comfort cooling and underfloor heating
- Gas fireplace to reception room
- Roof terraces with composite decking, lighting and power

Onsite Amenities:

- 24/7 concierge and onsite management
- Membership to gymnasium with pool and hamam
- Residents' lobby, lounge and screening room
- Secure basement car parking (by separate negotiation)



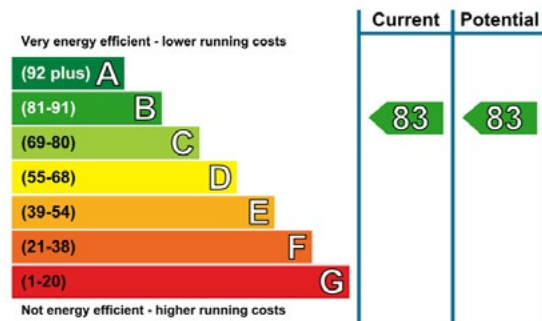
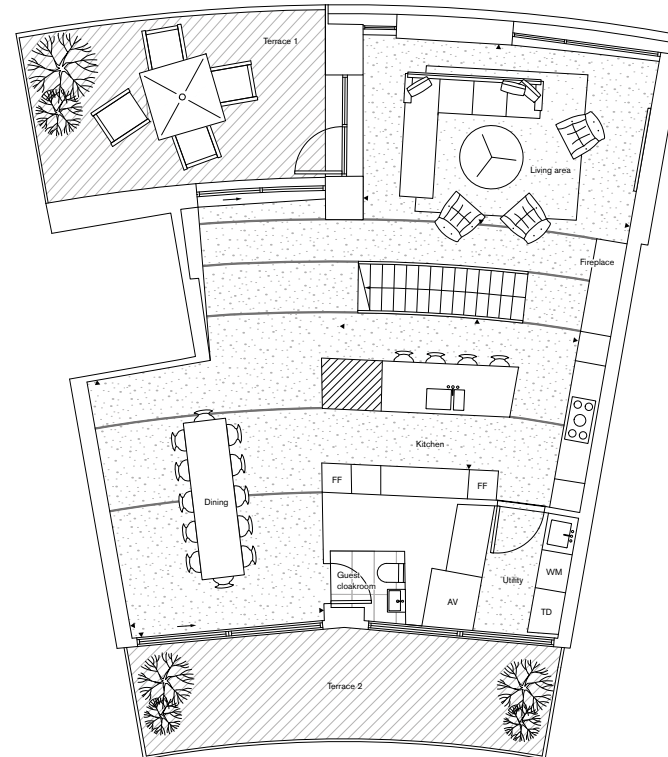
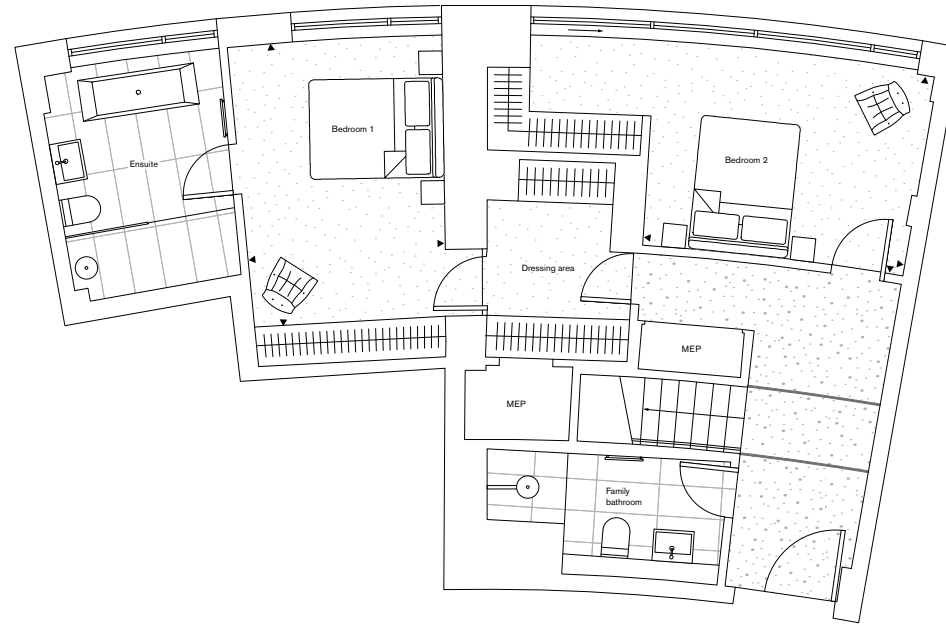


Clockwise from top left: master ensuite bathroom; second bedroom with fitted wardrobes; staircase to upper living floor; open plan living area with feature gas fireplace

H.713 SEVENTH FLOOR 2 BEDROOMS

| | | |
|-------------------|-----------|-----------------|
| Net saleable area | sq m | sq ft |
| Total | 183.3 | 1,973 |
| Seventh Floor | 77.3 | 832 |
| Eighth Floor | 106 | 1,141 |
| Ceiling height | m | |
| Max/Min | 2.9/2.4 | |
| Room dimensions | m | ft |
| Living area | 5.7 × 3.9 | 18' 8" × 12' 1" |
| Kitchen | 5.0 × 3.2 | 16' 5" × 10' 6" |
| Bedroom 1 | 3.0 × 4.2 | 9' 1" × 13' 9" |
| Bedroom 2 | 3.8 × 3.0 | 12' 6" × 9' 10" |
| Outdoor space | sq m | sq ft |
| Terrace 1 | 22.1 | 238 |
| Terrace 2 | 20.0 | 215 |

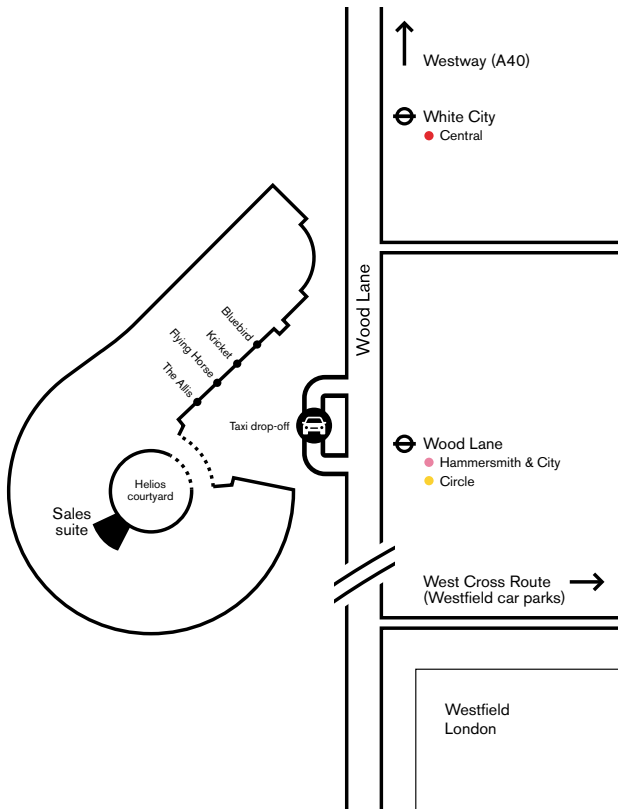
Please note: net saleable areas are measured as built whereas room and outdoor space dimensions are approximate and for guidance only.



AV Audio Visual
 FF Fridge Freezer
 MEP Mechanical, Electrical, Plumbing
 TD Tumble Dryer
 WM Washing Machine



SALES SUITE MAP



DETAILS

Address

Television Centre, 101 Wood Lane,
White City, London W12 7FW

Contact

+44 (0)20 8811 8720
televisioncentre.com

Savills

+44 (0)20 7409 8756
www.savills.co.uk
newhomes@savills.com

Strutt & Parker

+44 (0)20 7318 4677
www.struttandparker.com
newhomes@struttandparker.com

Local authority

London Borough of Hammersmith & Fulham

Building guarantee

10 year BLP warranty from completion

Tenure

975 year leasehold

Service charge per annum (2021)

£8.62 per sq ft (The Helios)
+ £0.78 - 0.81 per sq ft (Insurance - tbc)

Ground rent

£1,000

STANHOPE

 **MITSUI FUDOSAN**

 **AIMCo**

 
BNP PARIBAS GROUP

NOTE

All computer-generated images (CGIs) and photography images are indicative only. Savills and Strutt & Parker for themselves and their clients and any joint agents give notice that:

1. They are not authorised to make or give any representations or warranties in relation to the property either here or elsewhere, either on their own behalf or on behalf of their client or otherwise. They assume no responsibility for any statement that may be made in these particulars. These particulars have been prepared in good faith and with all due care and are believed to be correct at the time of publication. However, they do not constitute any contract, part of a contract, offer representation or warranty and must not be relied upon as statements or representations of fact.
2. Any areas, dimensions, measurements or distances are approximate. The text, images, photographs and plans are for guidance only and are not necessarily comprehensive. It should not be assumed that the property has all the necessary planning, building regulation or other consents and neither Savills nor Strutt & Parker or their clients or joint agents have tested any services, equipment or facilities. Purchasers must satisfy themselves by inspection or otherwise.
3. These particulars were prepared from preliminary plans and specifications before the completion of the properties and are intended only as a guide for the marketing of Television Centre. Elements may change during construction and final finishes could vary. Prospective purchasers should not rely on this information and should ensure that their solicitor checks the plans and specification attached to their contract.

Design by dn&co.
dnco.com

February 2021

SEE MORE ONLINE

Virtual tour & film

televisioncentre.com/homes/apartment-tours

The Architects' Series

televisioncentre.com/homes/the-architects-series