

# *The Ariel*

Floorplans

**TELEVISION CENTRE**

# *Contents*

*Television Centre*  
Page 02

*The Ariel*  
Page 04

*Amenities*  
Page 07

*Floorplans*  
Page 10

*Apartments*  
Page 36

*Specifications*  
Page 72

*Contact Us*  
Page 76



# The Home of Expression

The Ariel

Television Centre, former home of the BBC, set the foundation for the future. Now, it charts a new course as West London's cultural core. A place for individuals everywhere to come together. To live, work, meet and explore. To live out who they really are among the homes, offices, dining and entertainment destinations that call White City their own.

## Estate Map

### Residential

- 01 The Ariel  
Future apartments
- 02 Scenery House  
Future apartments
- 03a 1-17 Forbes Gardens  
Future townhouses
- 03b 18-30 Forbes Gardens  
Future townhouses
- 04 The Helios  
Completed apartments
- 05 The Crescent  
Completed apartments
- 06 MacFarlane Place  
Completed apartments

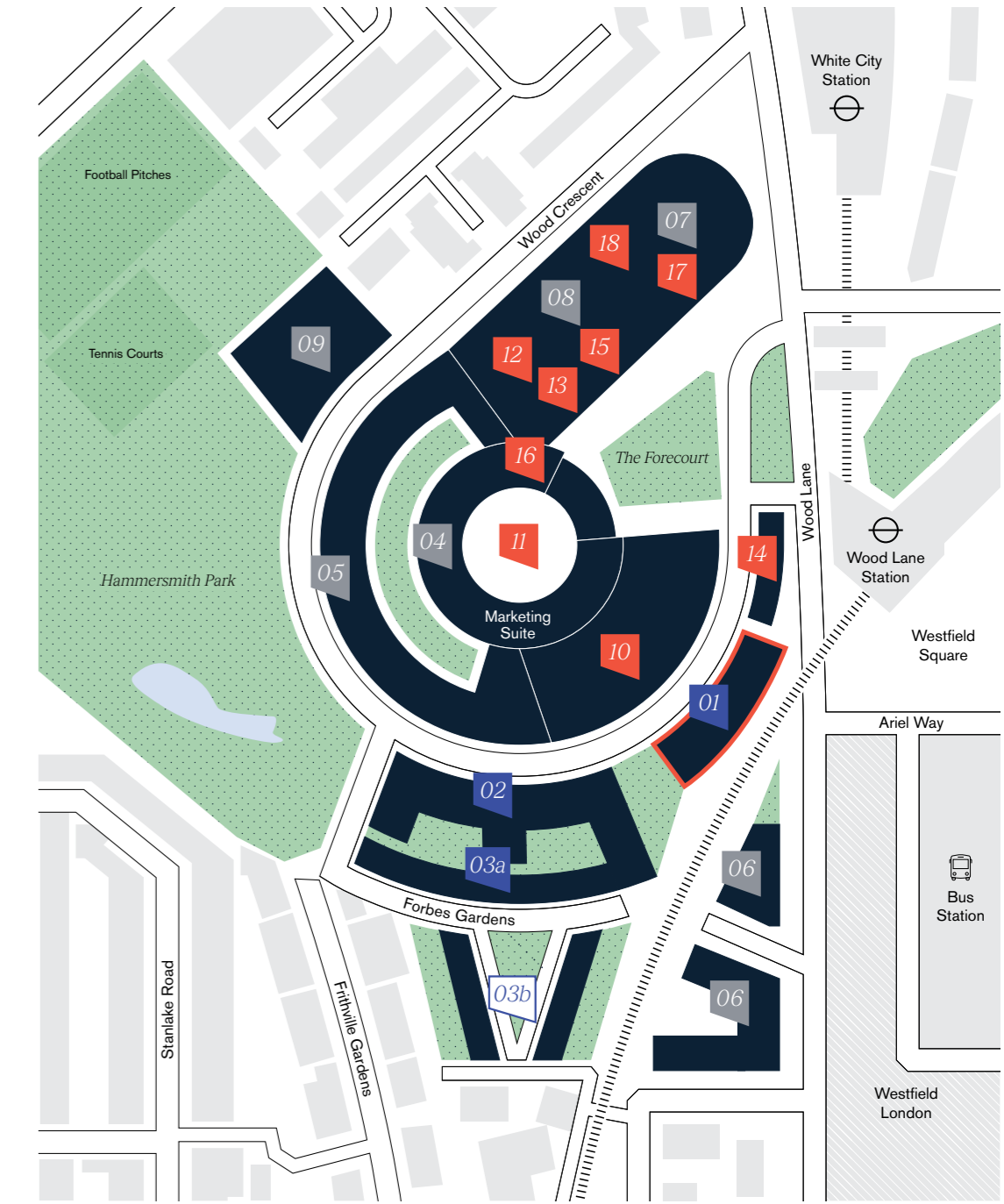
### Offices

- 07 1 Television Centre  
Offices
- 08 2 Television Centre  
Offices & co-working
- 09 1 Wood Crescent  
Offices

### Amenities

- 10 Television Studios  
BBC Studioworks
- 11 Residents' Gym & Pool  
Managed by Soho House
- 12 White City House  
Private members club  
by Soho House
- 13 Electric Cinema  
by Soho House
- 14 The Broadcaster  
Pub & rooftop bar
- 15 Flying Horse Coffee  
Coffee house
- 16 Endo at the Rotunda  
Michelin Star restaurant
- 17 The Black Farmer  
Farm shop & café
- 18 The Studio Space  
Multi-use studio space

Floorplans



■ Residential under construction 
 ■ Completed offices & residential 
 ■ Amenities 
 ■ Future residential

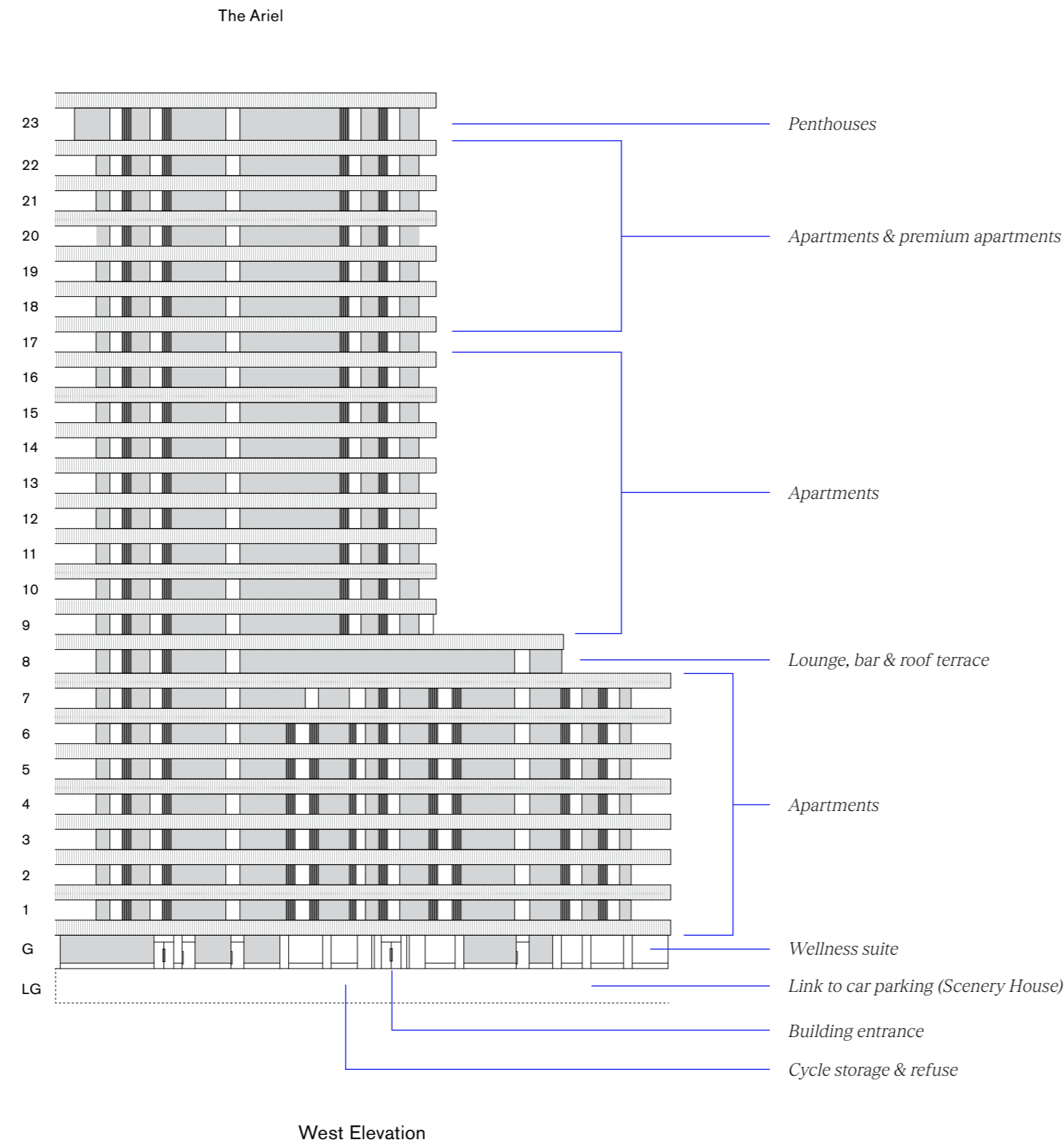
# *The Ariel*



Entrance

A collection of 167 standout apartments arranged over 23 storeys, The Ariel is the only tower within the historic development and will offer uninterrupted views of West London, the City and beyond.

# Building plan



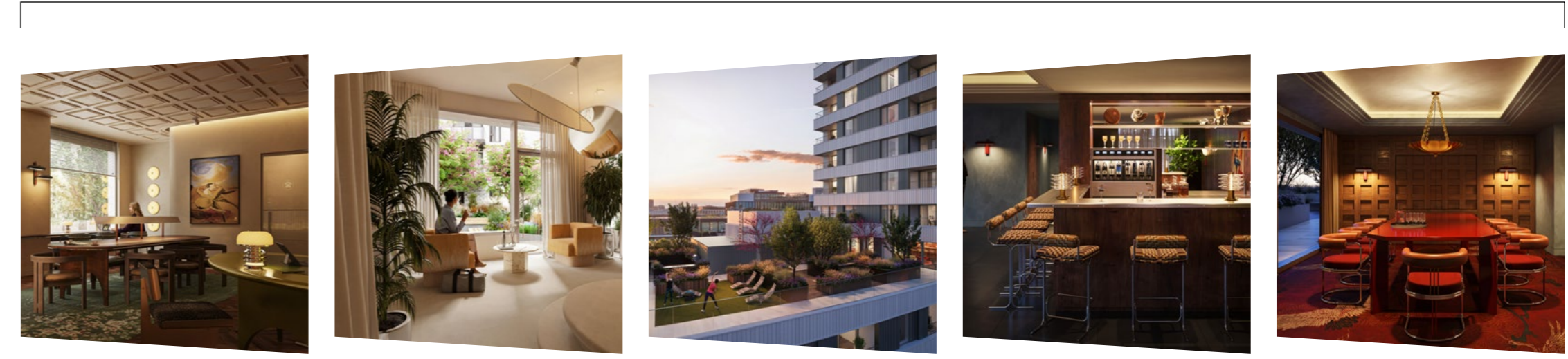
# Amenities



Residents' lobby & co-working

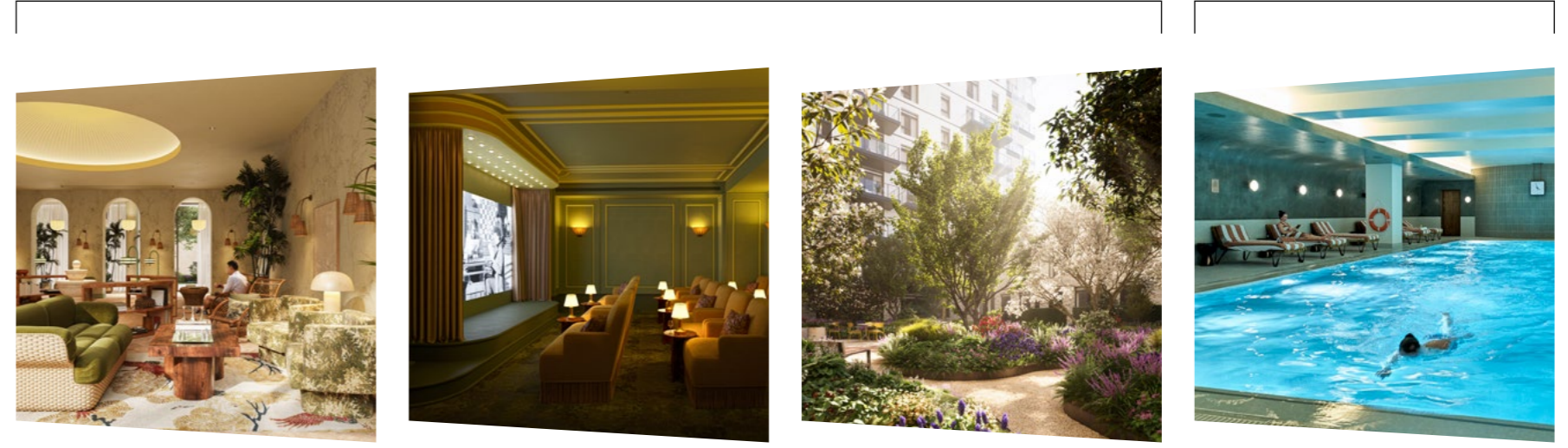
Private residential amenities are arranged across a number of buildings to encourage connectivity and community.

## The Ariel



Residents' lobby & co-working    Wellness lounge, PT & yoga/pilates studios    Roof terrace    Bar & lounge    Private dining & meeting room

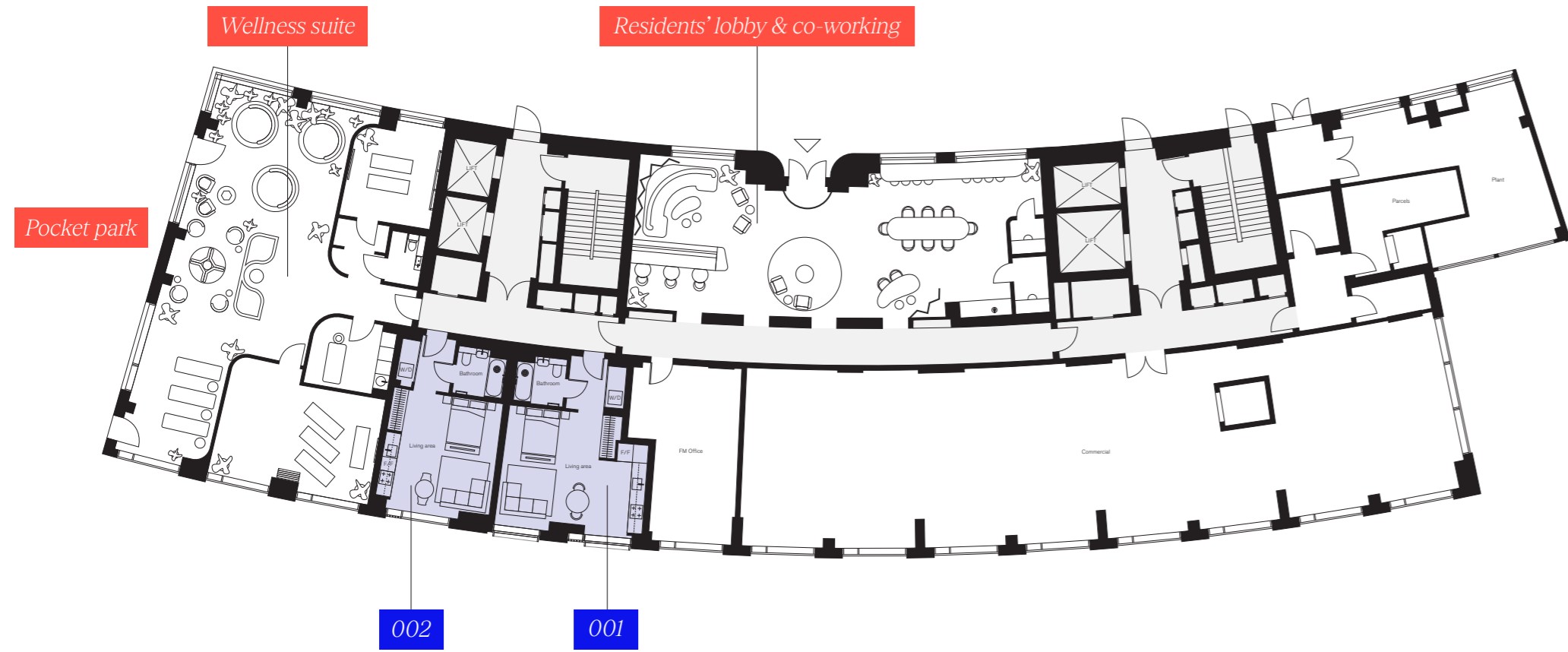
## Scenery House



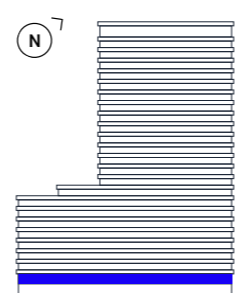
Residents' lounge    Cinema    Courtyard gardens    Residents' gym & pool



# Ground floor



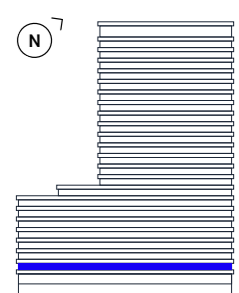
**Key**  
 Studio



# Floor 1



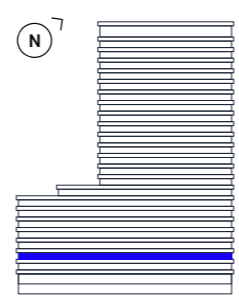
**Key**  
 Studio  
 1 Bedroom  
 2 Bedroom



# Floor 2

**Key**

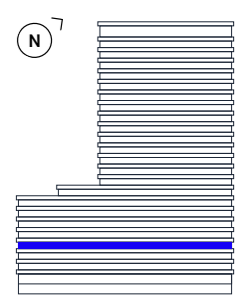
- Studio
- 1 Bedroom
- 2 Bedroom



# Floor 3

**Key**

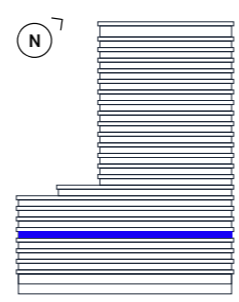
- Studio
- 1 Bedroom
- 2 Bedroom



# Floor 4

**Key**

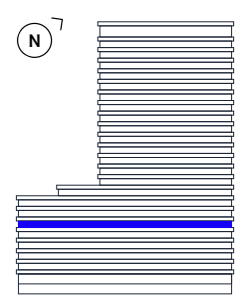
- Studio
- 1 Bedroom
- 2 Bedroom



# Floor 5

**Key**

- Studio
- 1 Bedroom
- 2 Bedroom



# Floor 6

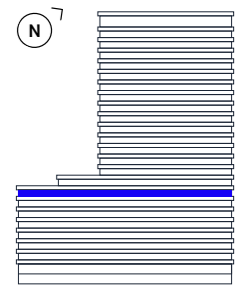
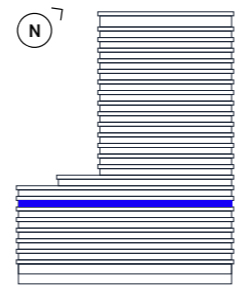
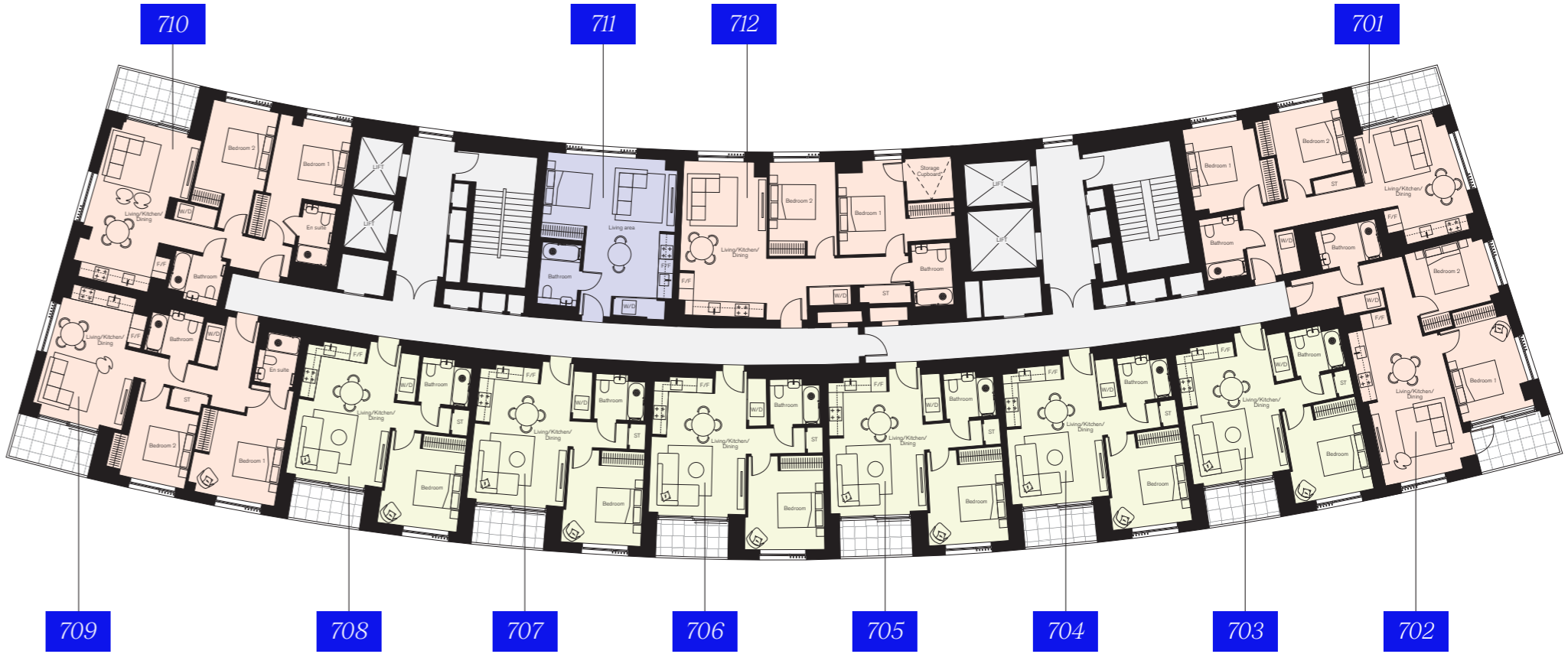
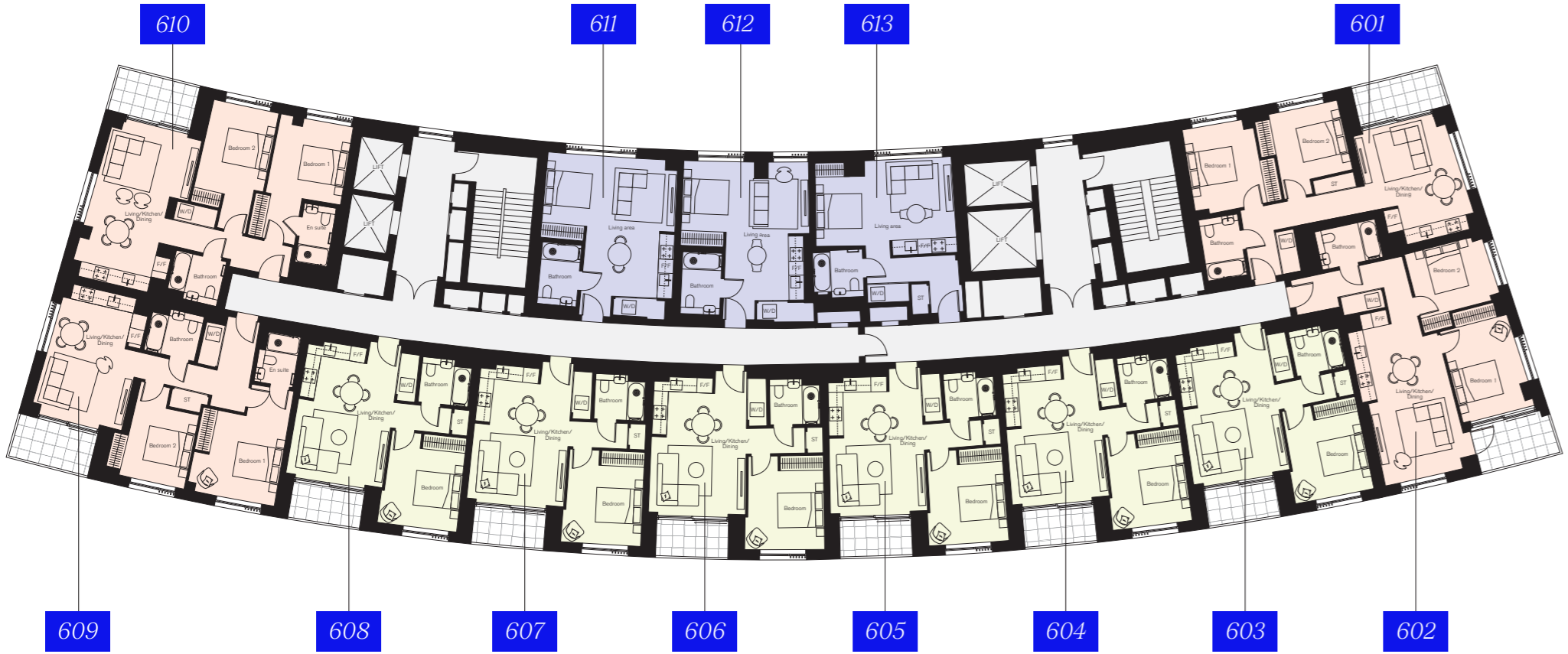
# Floor 7

**Key**

- Studio
- 1 Bedroom
- 2 Bedroom

**Key**

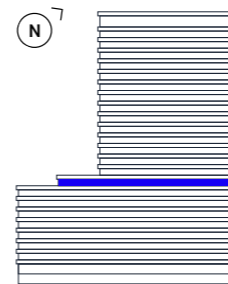
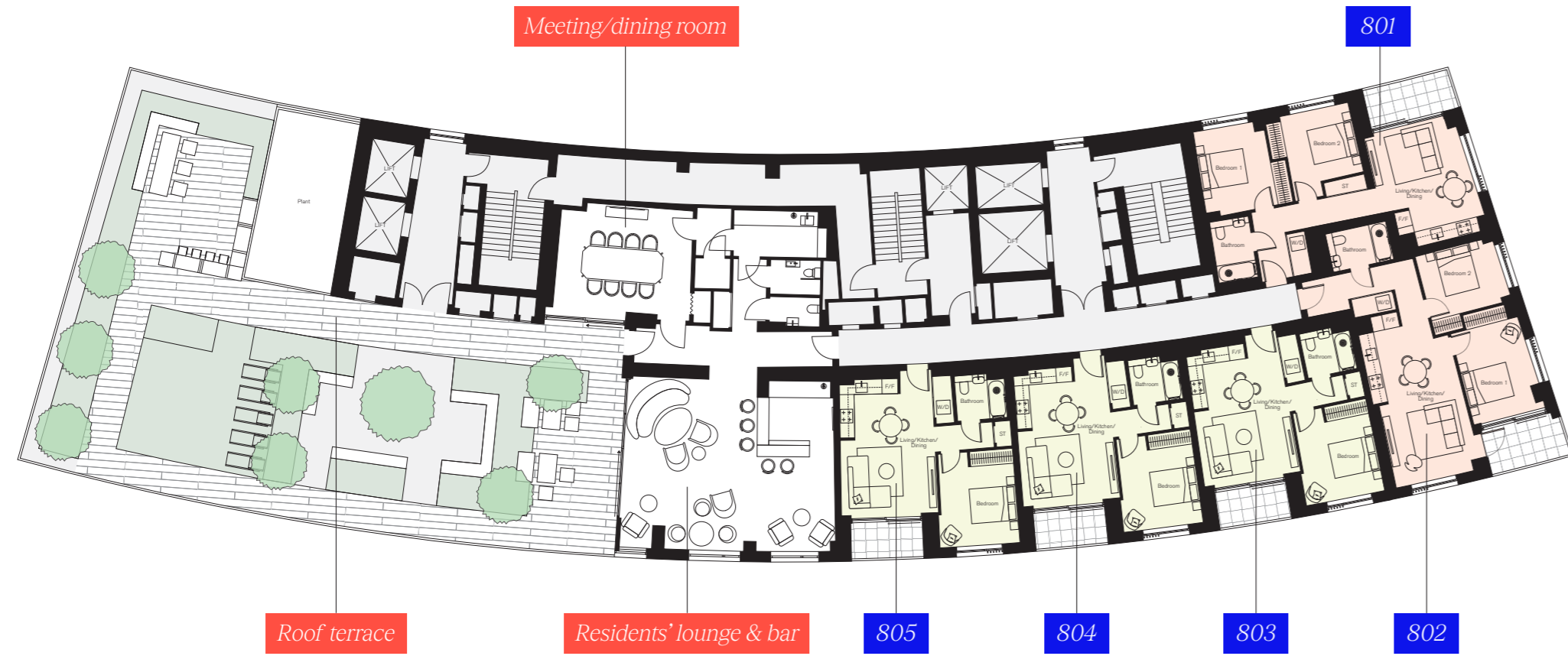
- Studio
- 1 Bedroom
- 2 Bedroom



# Floor 8

**Key**

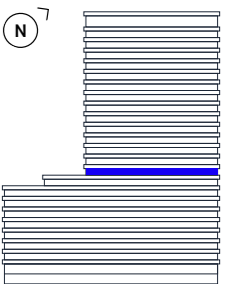
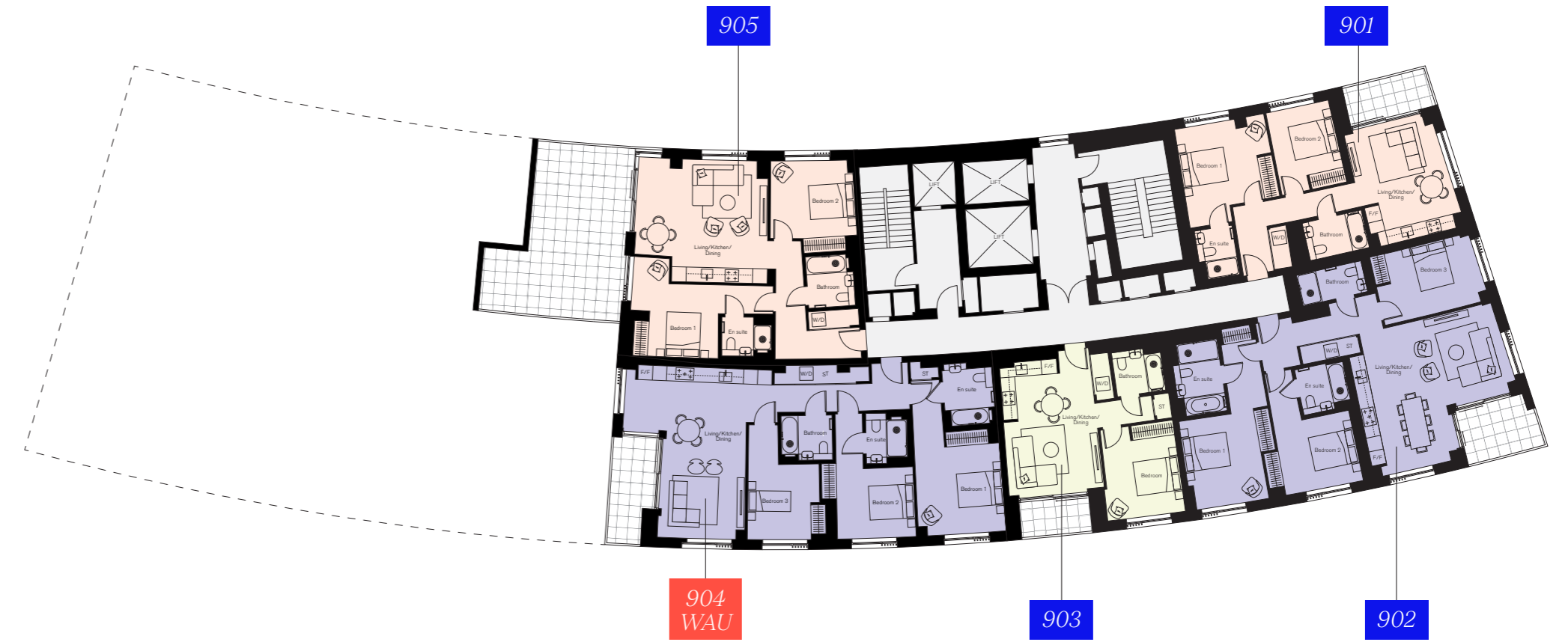
- 1 Bedroom
- 2 Bedroom



# Floor 9

**Key**

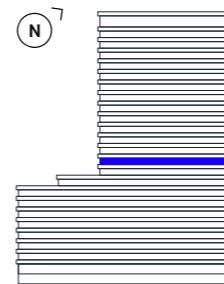
- 1 Bedroom
- 2 Bedroom
- 3 Bedroom



Floor 10

Key

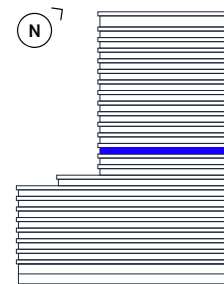
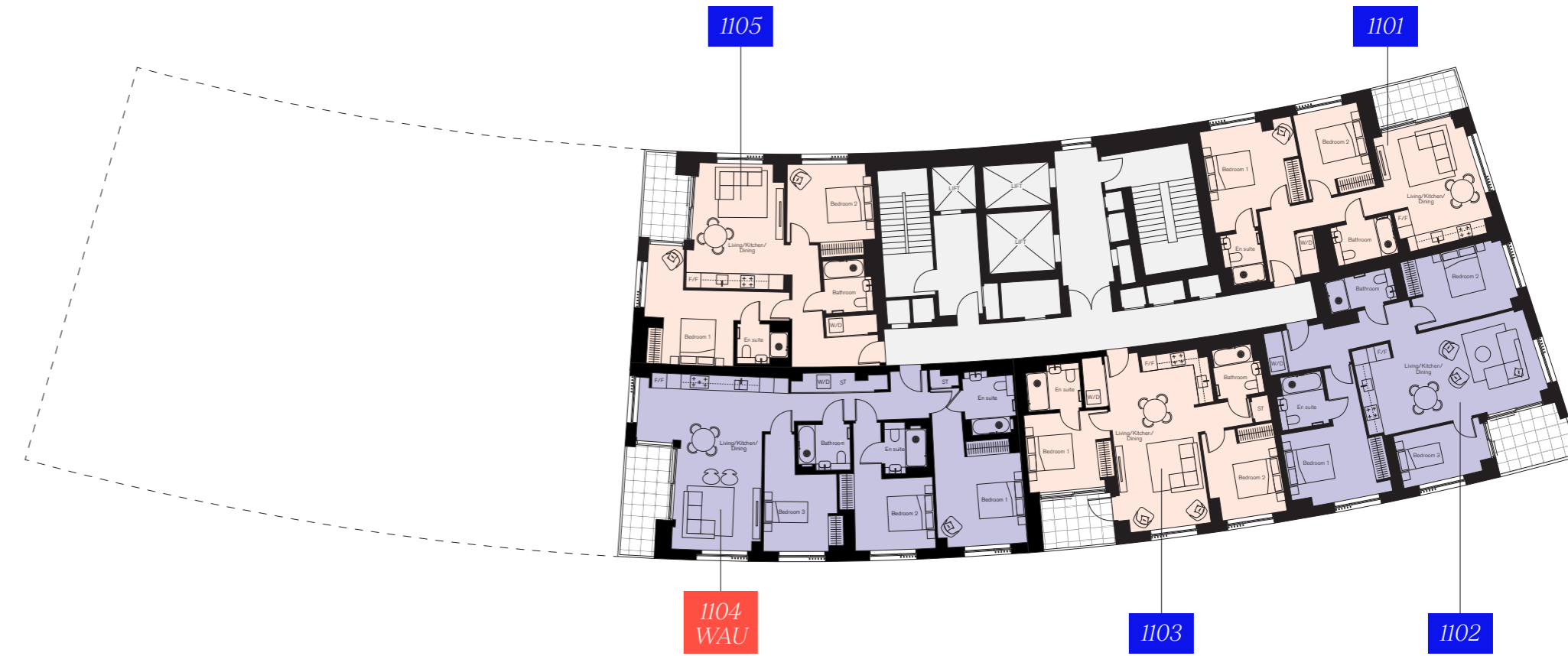
- 1 Bedroom
- 2 Bedroom
- 3 Bedroom



Floor 11

Key

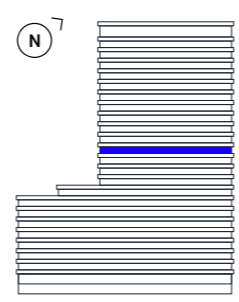
- 2 Bedroom
- 3 Bedroom



Floor 12

**Key**

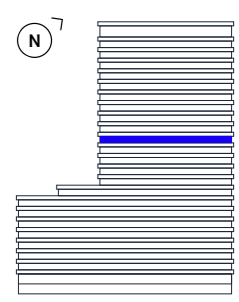
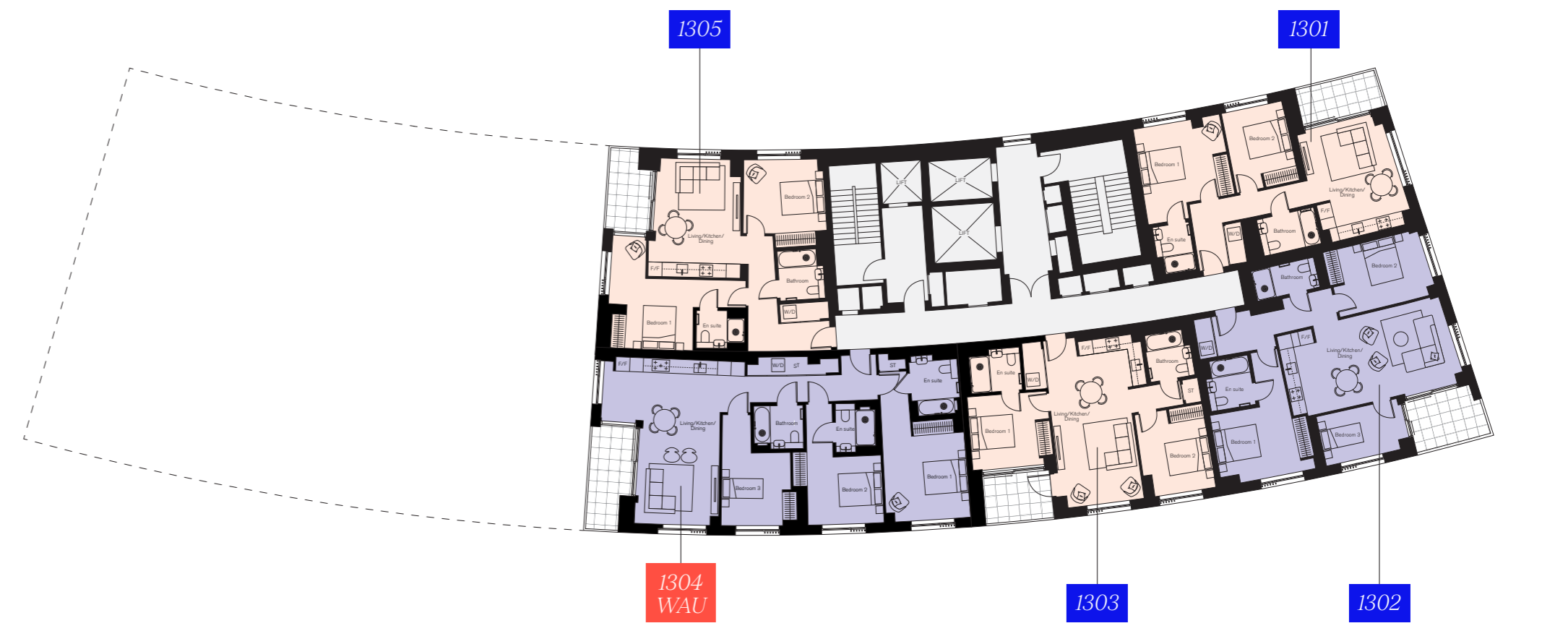
- 2 Bedroom
- 3 Bedroom



Floor 13

**Key**

- 2 Bedroom
- 3 Bedroom



Floor 14

**Key**

- 2 Bedroom
- 3 Bedroom



Floor 15

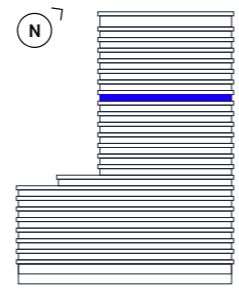
**Key**

- 2 Bedroom
- 3 Bedroom



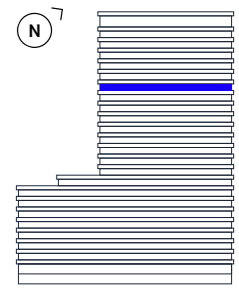
# Floor 16

**Key**  
 2 Bedroom  
 3 Bedroom



# Floor 17

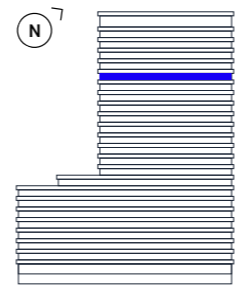
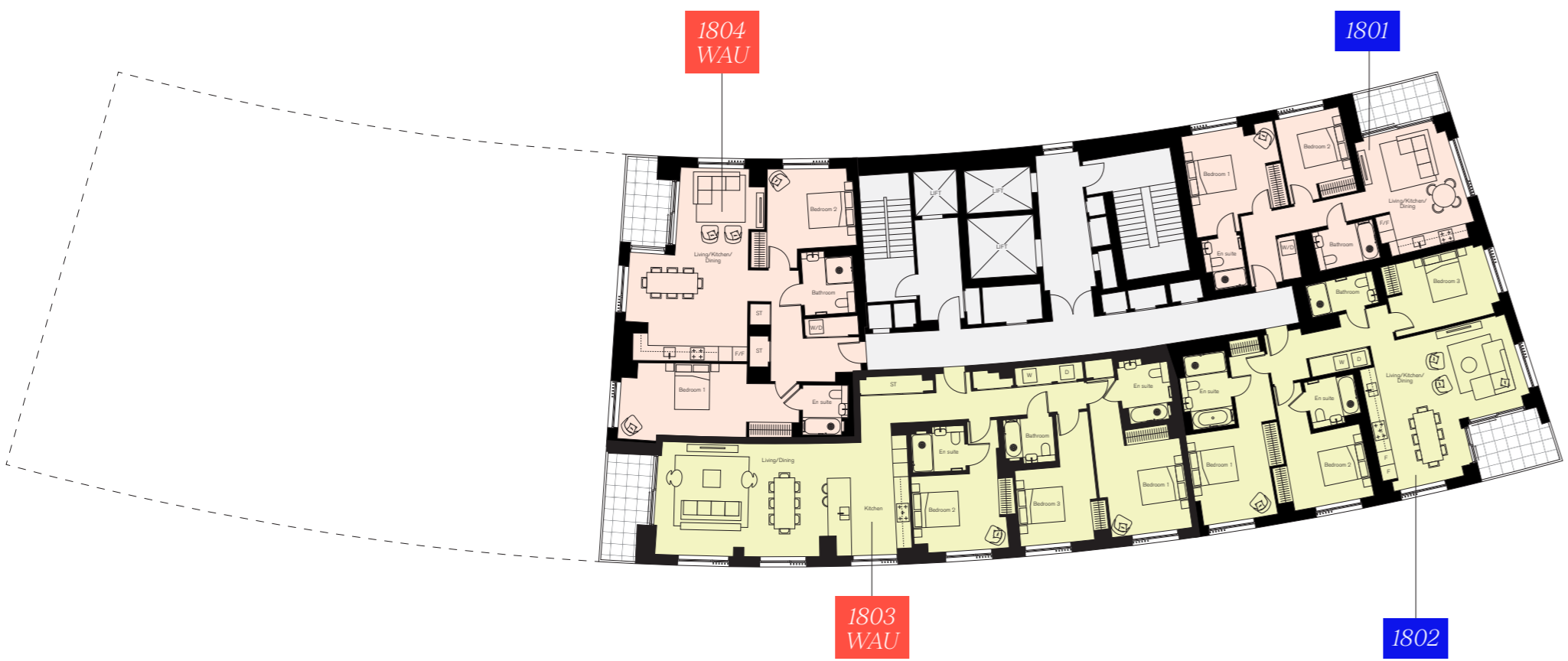
**Key**  
 2 Bedroom  
 3 Bedroom



# Floor 18

**Key**

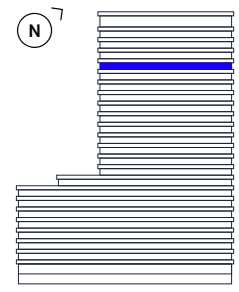
- 2 Bedroom
- Premium



# Floor 19

**Key**

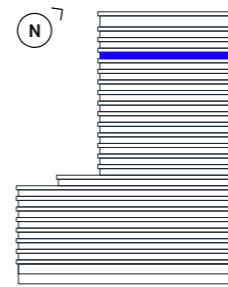
- 2 Bedroom
- Premium



# Floor 20

**Key**

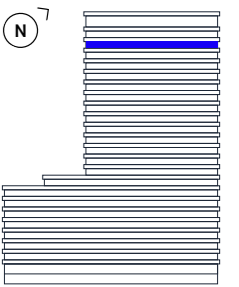
- 2 Bedroom
- Premium



# Floor 21

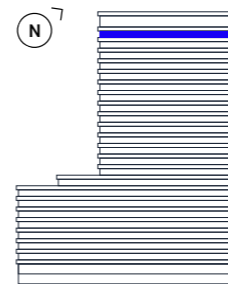
**Key**

- 2 Bedroom
- Premium



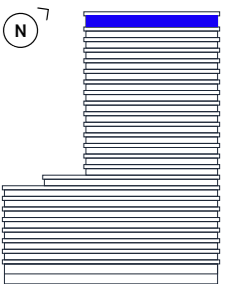
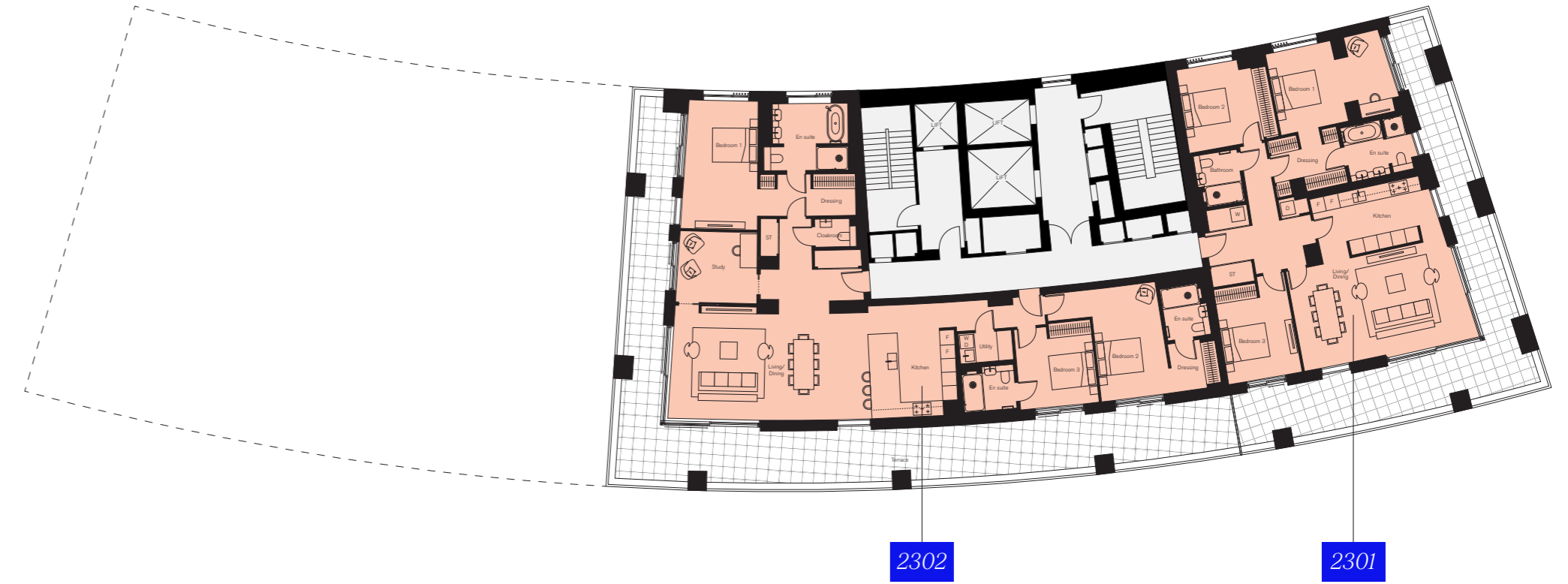
Floor 22

Key  
Premium



Floor 23

Key  
Penthouse



# *Apartments*

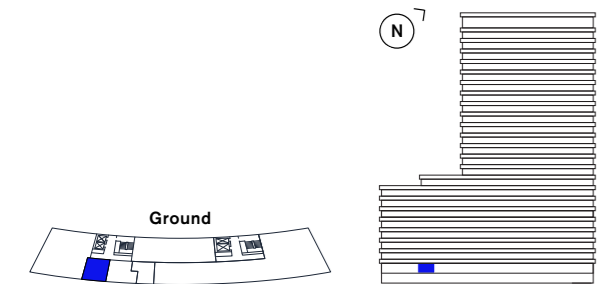
# *Studio*

Apartments

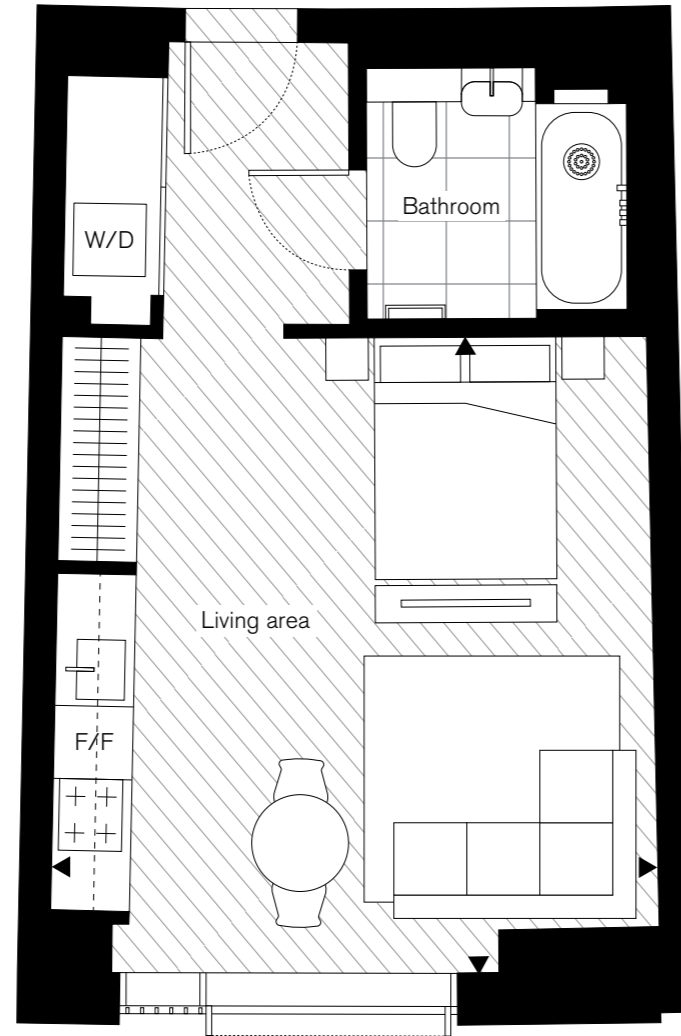
# Studio

## Type 1a

<b>Floor</b>	G	
<b>Apartment</b>	002	
<b>Net Sales Area (NSA)</b>	<b>37.6 sq m</b>	<b>405 sq ft</b>
Living area	5.26m x 4.98m	17'3" x 16'4"



**Disclaimer:** All plans and images contained in this brochure are indicative only and must not be relied upon as being a true or accurate depiction of the relevant scene or area. Specifications, including measurements, dimensions, sizes and distances are approximate only and subject to change at any time without notice. Please note that the units come in different sizes and configurations depending on location within the building.



**Key**  
 ST – Storage  
 W/D – Washer/Dryer  
 F/F – Fridge freezer

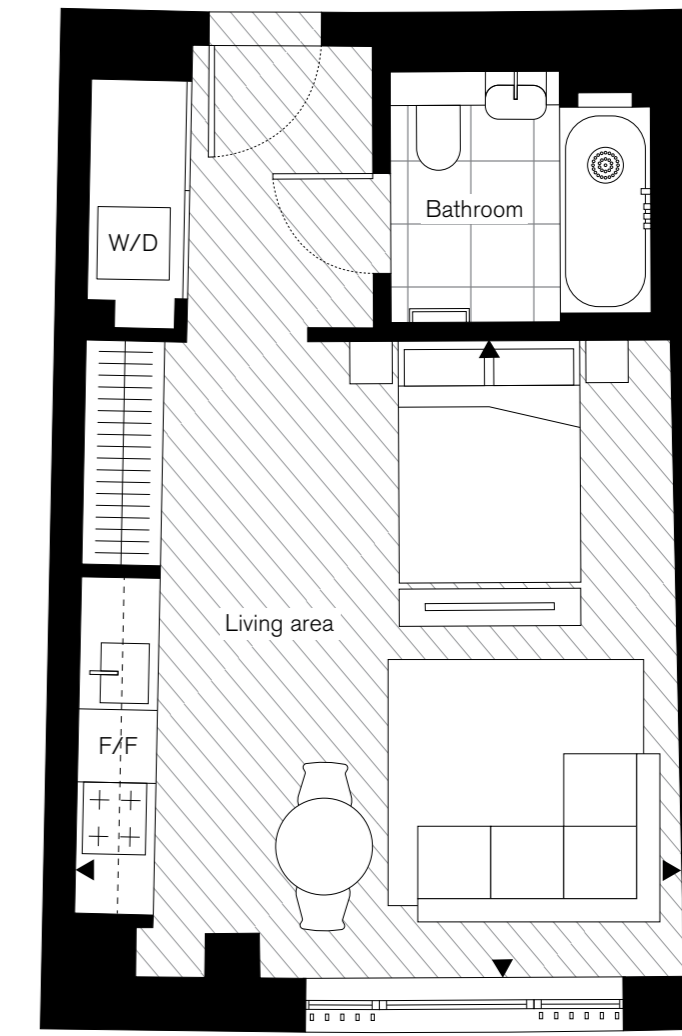
# Studio

## Type 1b

<b>Floors</b>	1, 2, 3, 4	
<b>Apartments</b>	107, 207, 307, 407	
<b>Net Sales Area (NSA)</b>	<b>37.7 sq m</b>	<b>406 sq ft</b>
Living area	5.27m x 5.00m	17'3" x 16'5"



**Disclaimer:** All plans and images contained in this brochure are indicative only and must not be relied upon as being a true or accurate depiction of the relevant scene or area. Specifications, including measurements, dimensions, sizes and distances are approximate only and subject to change at any time without notice. Please note that the units come in different sizes and configurations depending on location within the building.

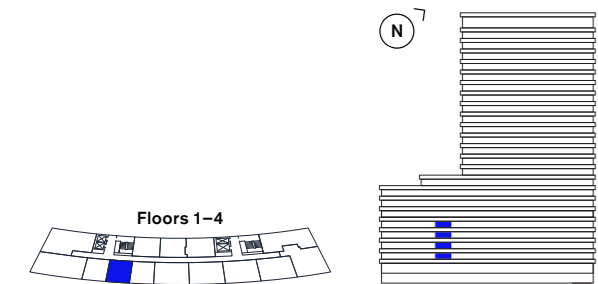


**Key**  
 ST – Storage  
 W/D – Washer/Dryer  
 F/F – Fridge freezer

# Studio

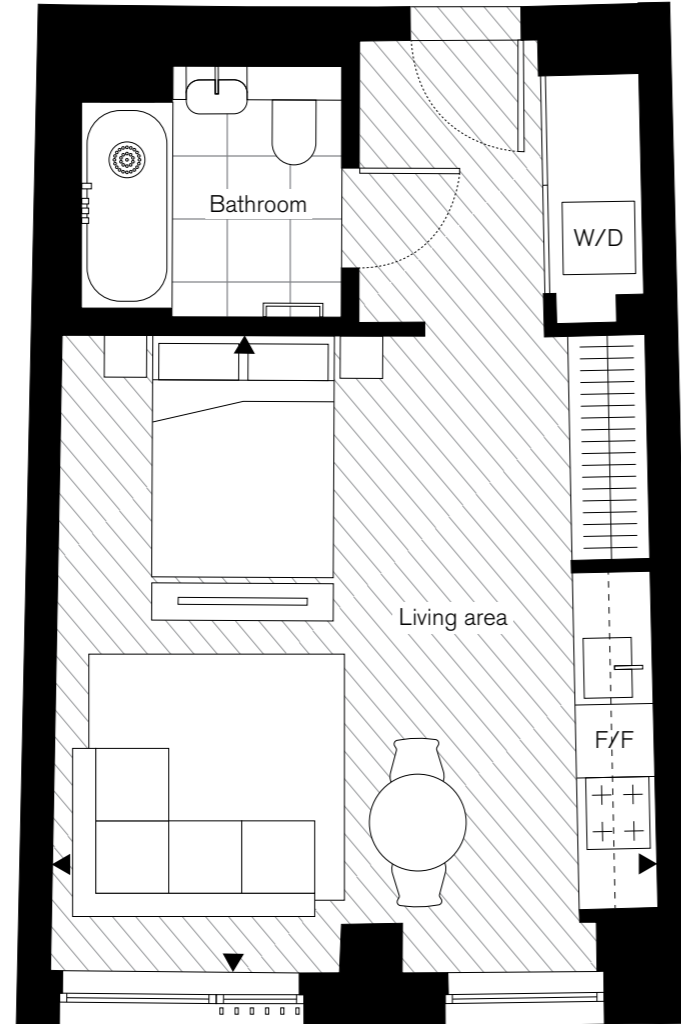
## Type 1c

<b>Floors</b>		
1, 2, 3, 4		
<b>Apartments</b>		
108, 208, 308, 408		
<b>Net Sales Area (NSA)</b>	<b>37.6 sq m</b>	<b>405 sq ft</b>
Living area	5.27m x 5.01m	17'3" x 16'5"



**Disclaimer:** All plans and images contained in this brochure are indicative only and must not be relied upon as being a true or accurate depiction of the relevant scene or area. Specifications, including measurements, dimensions, sizes and distances are approximate only and subject to change at any time without notice. Please note that the units come in different sizes and configurations depending on location within the building.

**Key**  
 ST – Storage  
 W/D – Washer/Dryer  
 F/F – Fridge freezer



# Studio

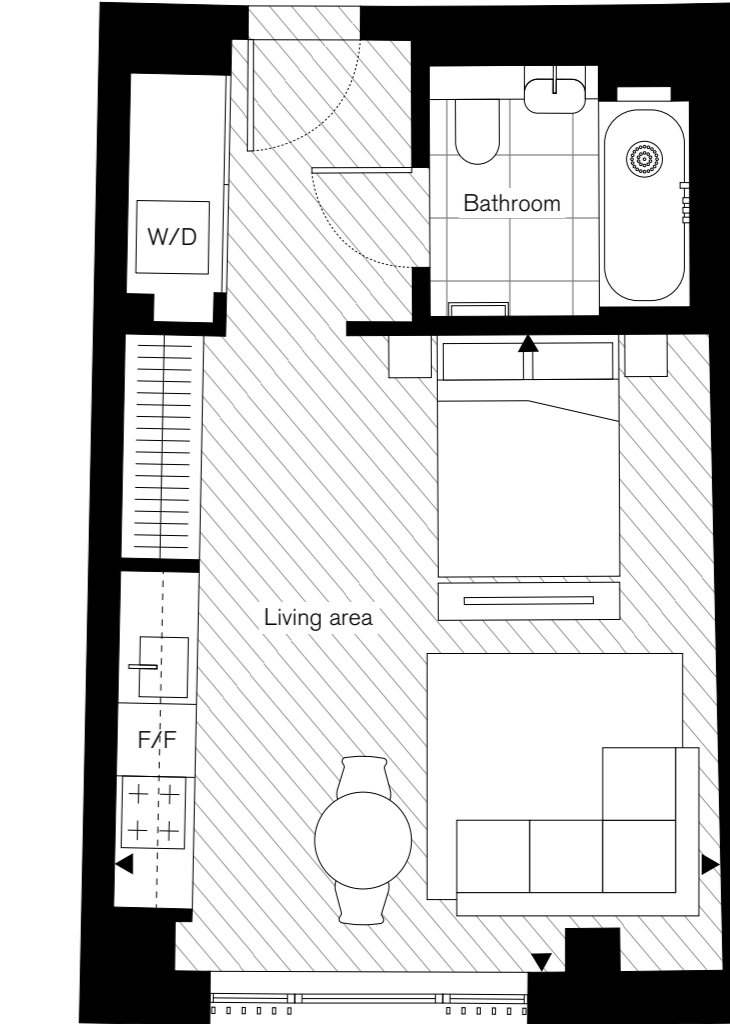
## Type 1d

<b>Floors</b>		
1, 2, 3, 4		
<b>Apartments</b>		
109, 209, 309, 409		
<b>Net Sales Area (NSA)</b>	<b>37.7 sq m</b>	<b>406 sq ft</b>
Living area	5.27m x 5.01m	17'3" x 16'5"



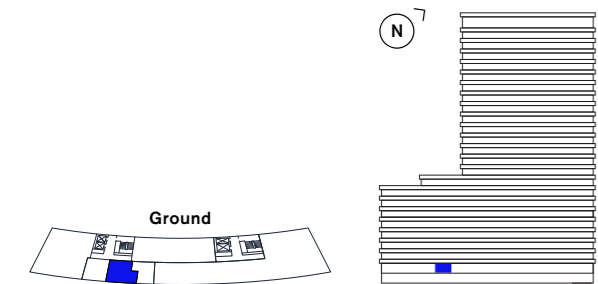
**Disclaimer:** All plans and images contained in this brochure are indicative only and must not be relied upon as being a true or accurate depiction of the relevant scene or area. Specifications, including measurements, dimensions, sizes and distances are approximate only and subject to change at any time without notice. Please note that the units come in different sizes and configurations depending on location within the building.

**Key**  
 ST – Storage  
 W/D – Washer/Dryer  
 F/F – Fridge freezer

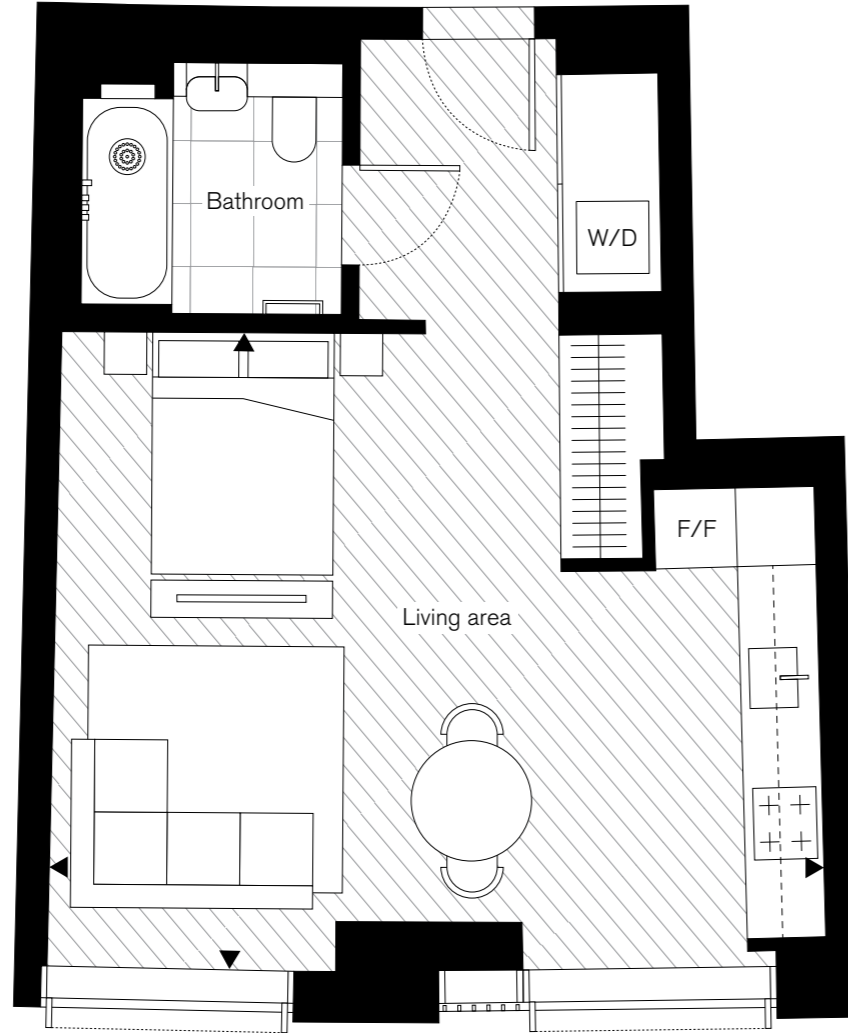


# Studio Type 2

<b>Floor</b>		
G		
<b>Apartment</b>		
001		
<b>Net Sales Area (NSA)</b>	<b>43.8 sq m</b>	<b>471 sq ft</b>
Living area	5.25m x 6.40m	17'3" x 20'12"



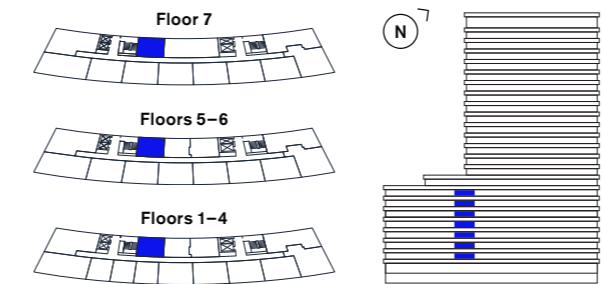
**Disclaimer:** All plans and images contained in this brochure are indicative only and must not be relied upon as being a true or accurate depiction of the relevant scene or area. Specifications, including measurements, dimensions, sizes and distances are approximate only and subject to change at any time without notice. Please note that the units come in different sizes and configurations depending on location within the building.



**Key**  
 ST – Storage  
 W/D – Washer/Dryer  
 F/F – Fridge freezer

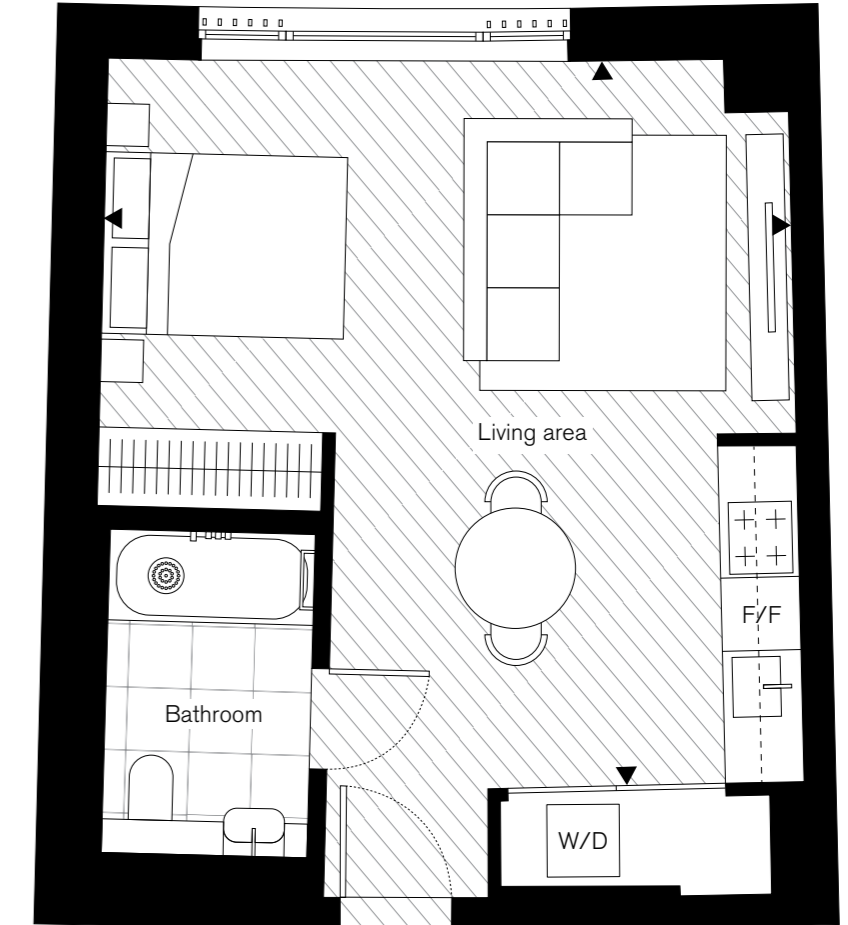
# Studio Type 3

<b>Floors</b>		
1, 2, 3, 4, 5, 6, 7		
<b>Apartments</b>		
112, 212, 312, 412, 511, 611, 711		
<b>Net Sales Area (NSA)</b>	<b>39.9 sq m</b>	<b>429 sq ft</b>
Living area	5.99m x 5.68m	19'8" x 18'8"



**Disclaimer:** All plans and images contained in this brochure are indicative only and must not be relied upon as being a true or accurate depiction of the relevant scene or area. Specifications, including measurements, dimensions, sizes and distances are approximate only and subject to change at any time without notice. Please note that the units come in different sizes and configurations depending on location within the building.

**Key**  
 ST – Storage  
 W/D – Washer/Dryer  
 F/F – Fridge freezer



# Studio

## Type 4

**Floors**

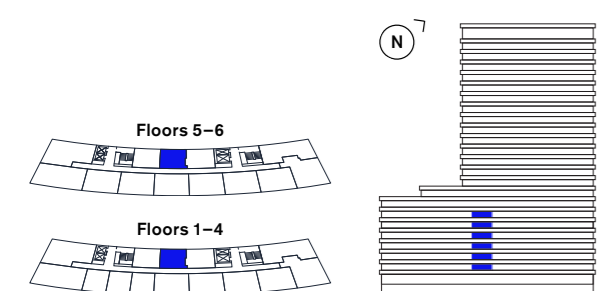
1, 2, 3, 4, 5, 6

**Apartments**

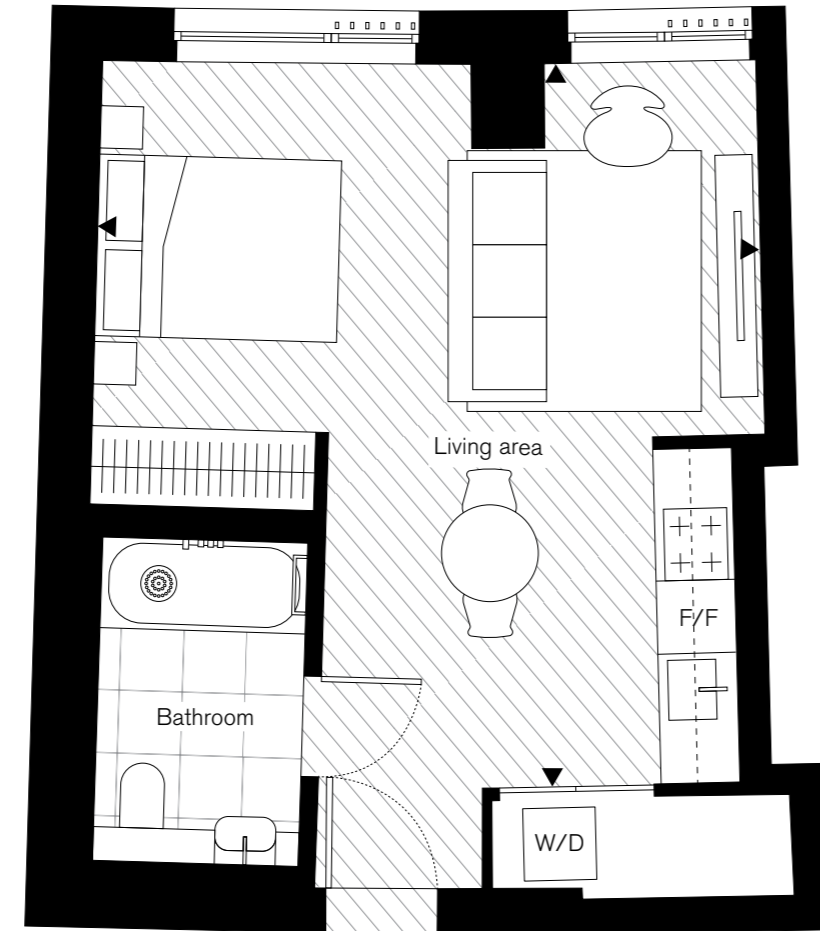
113, 213, 313, 413, 512, 612

**Net Sales Area (NSA)**    **37.9 sq m**    **408 sq ft**

Living area                      6.01m x 5.48m    19'9" x 17'12"



**Disclaimer:** All plans and images contained in this brochure are indicative only and must not be relied upon as being a true or accurate depiction of the relevant scene or area. Specifications, including measurements, dimensions, sizes and distances are approximate only and subject to change at any time without notice. Please note that the units come in different sizes and configurations depending on location within the building.



**Key**

- ST – Storage
- W/D – Washer/Dryer
- F/F – Fridge freezer

# Studio

## Type 5

**Floors**

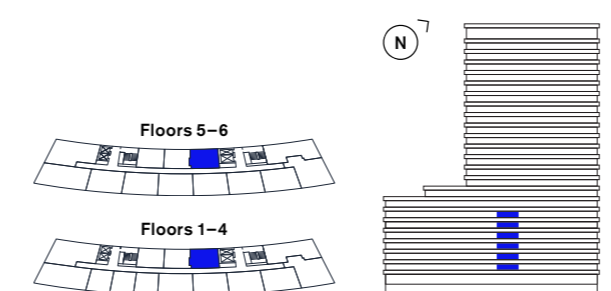
1, 2, 3, 4, 5, 6

**Apartments**

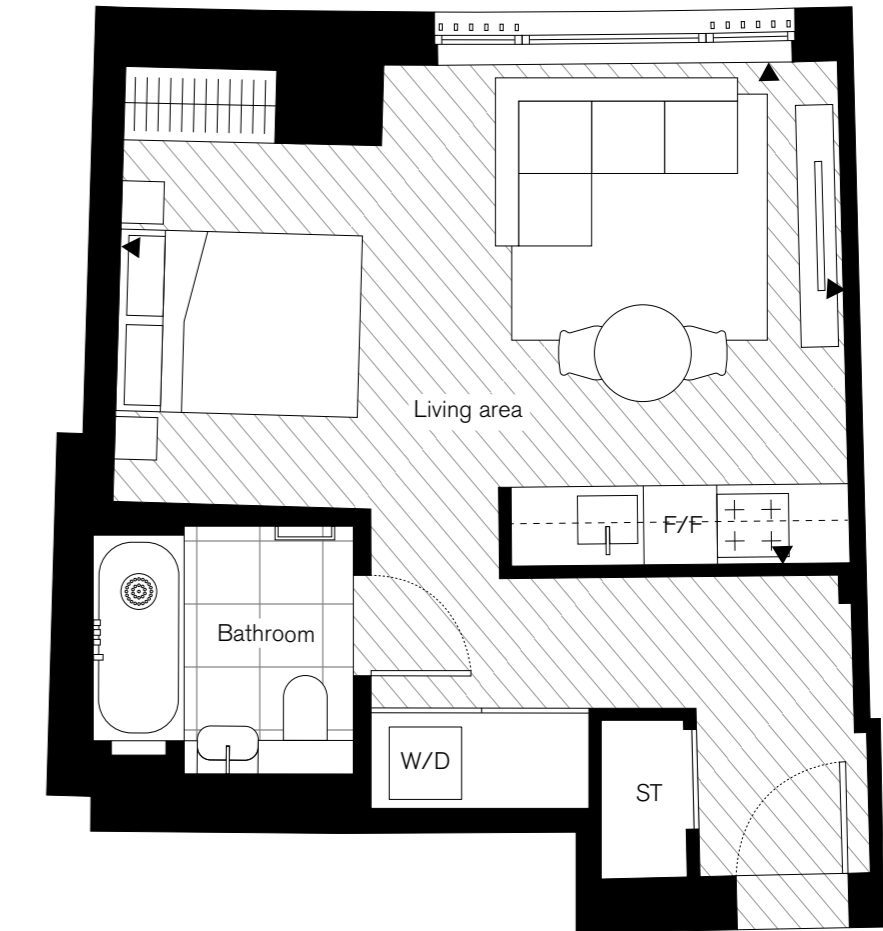
114, 214, 314, 414, 513, 613

**Net Sales Area (NSA)**    **39.5 sq m**    **425 sq ft**

Living area                      6.00m x 4.15m    19'8" x 13'7"



**Disclaimer:** All plans and images contained in this brochure are indicative only and must not be relied upon as being a true or accurate depiction of the relevant scene or area. Specifications, including measurements, dimensions, sizes and distances are approximate only and subject to change at any time without notice. Please note that the units come in different sizes and configurations depending on location within the building.



**Key**

- ST – Storage
- W/D – Washer/Dryer
- F/F – Fridge freezer

# 1 Bedroom

## Apartments

### 1 Bedroom

#### Type 1

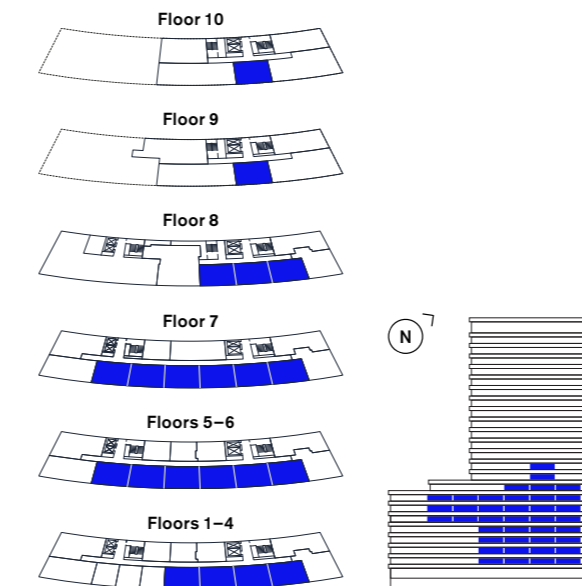
##### Floors

1, 2, 3, 4, 5, 6, 7, 8, 9, 10

##### Apartments

103, 104, 105, 106, 203, 204, 205, 206, 303, 304, 305, 306, 403, 404, 405, 406, 503, 504, 505, 506, 507, 508, 603, 604, 605, 606, 607, 608, 703, 704, 705, 706, 707, 708, 803, 804, 805, 903, 1003

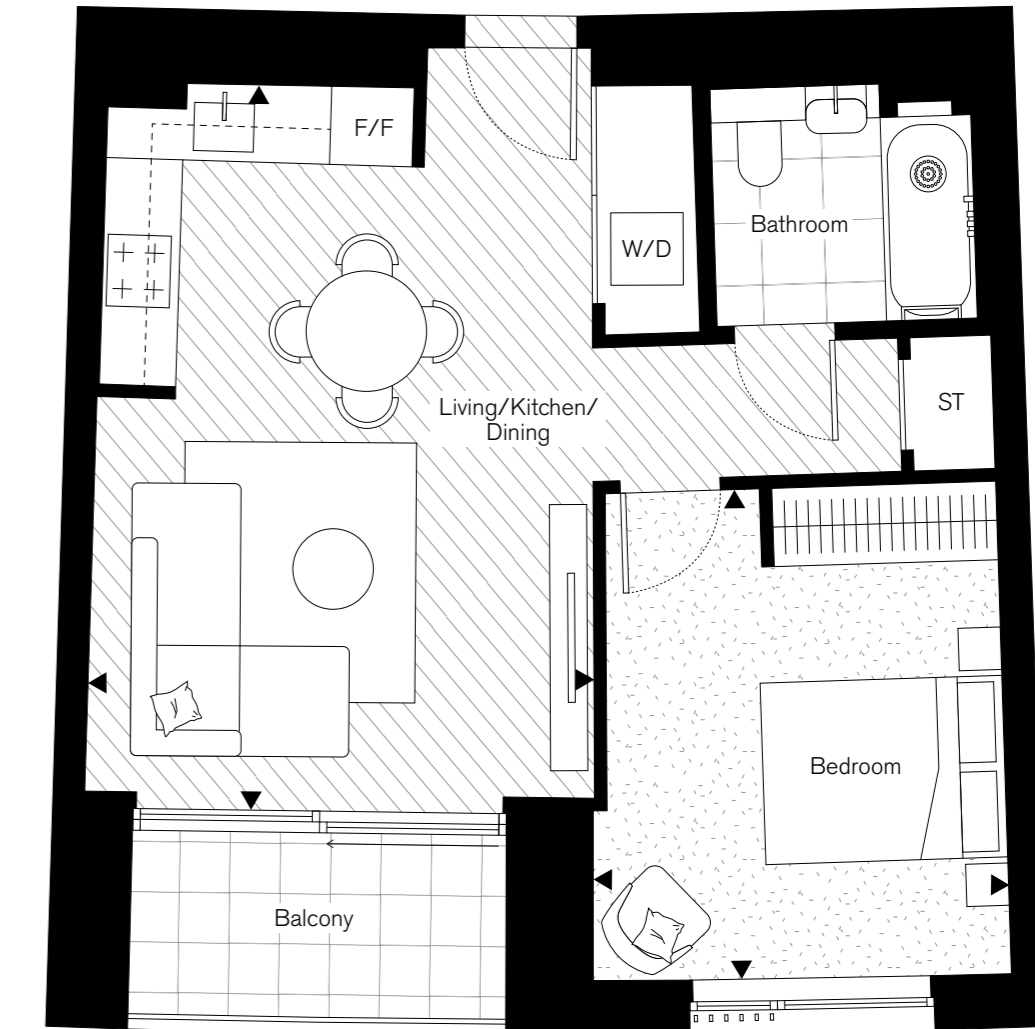
Net Sales Area (NSA)	51.5 sq m	554 sq ft
Living/Kitchen/Dining	6.01m x 4.17m	19'9" x 13'8"
Bedroom	4.05m x 3.43m	13'3" x 11'3"
Balcony	4.8 sq m	52 sq ft



**Disclaimer:** All plans and images contained in this brochure are indicative only and must not be relied upon as being a true or accurate depiction of the relevant scene or area. Specifications, including measurements, dimensions, sizes and distances are approximate only and subject to change at any time without notice. Please note that the units come in different sizes and configurations depending on location within the building.

##### Key

ST – Storage  
 W/D – Washer/Dryer  
 F/F – Fridge freezer



# 2 Bedroom

Apartments

## 2 Bedroom

### Type 1

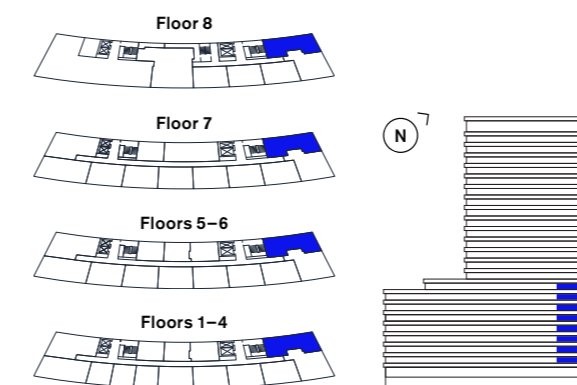
**Floors**

1, 2, 3, 4, 5, 6, 7, 8

**Apartments**

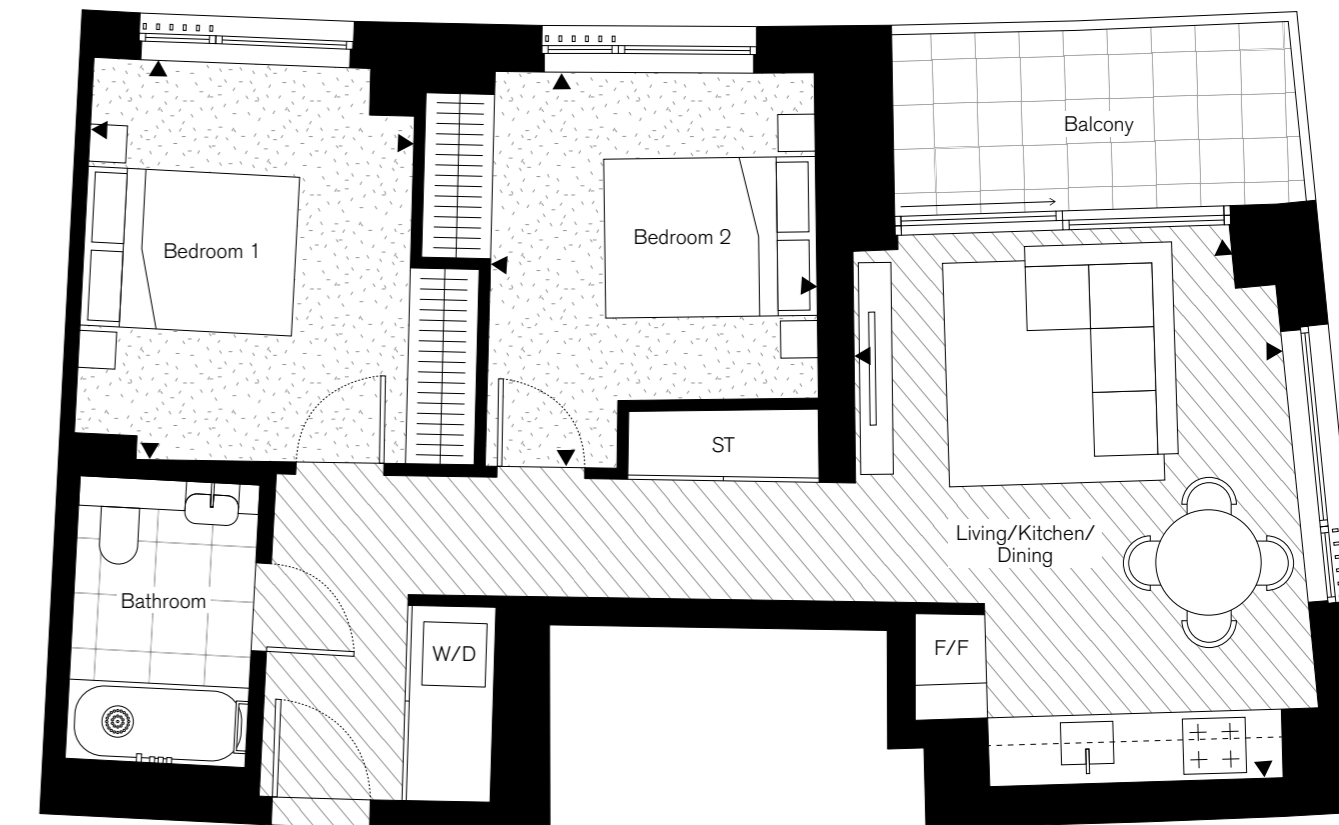
101, 201, 301, 401, 501, 601, 701, 801

Net Sales Area (NSA)	65.1 sq m	701 sq ft
Living/Kitchen/Dining	5.11m x 4.06m	16'9" x 13'4"
Bedroom 1	3.72m x 3.09m	12'2" x 10'2"
Bedroom 2	3.77m x 3.06m	12'4" x 10'0"
Balcony	6.6 sq m	71 sq ft



**Disclaimer:** All plans and images contained in this brochure are indicative only and must not be relied upon as being a true or accurate depiction of the relevant scene or area. Specifications, including measurements, dimensions, sizes and distances are approximate only and subject to change at any time without notice. Please note that the units come in different sizes and configurations depending on location within the building.

**Key**  
 ST – Storage  
 W/D – Washer/Dryer  
 F/F – Fridge freezer



## 2 Bedroom

### Type 2

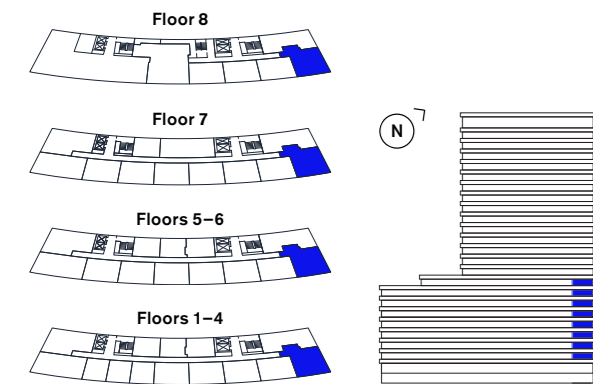
**Floors**

1, 2, 3, 4, 5, 6, 7, 8

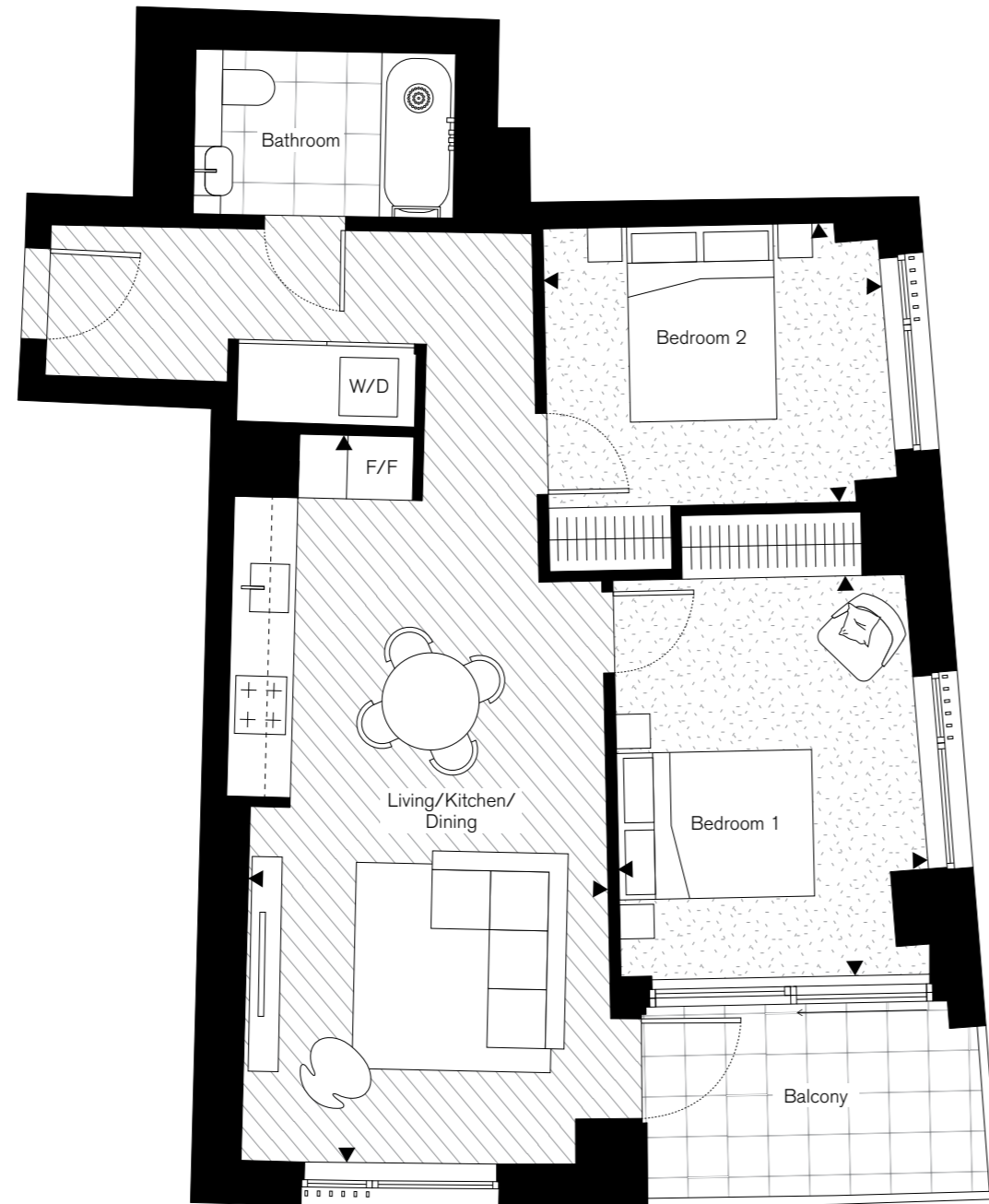
**Apartments**

102, 202, 302, 402, 502, 602, 702, 802

Net Sales Area (NSA)	70.5 sq m	759 sq ft
Living/Kitchen/Dining	7.45m x 3.68m	24'5" x 12'1"
Bedroom 1	4.06m x 3.17m	13'4" x 10'5"
Bedroom 2	3.45m x 2.86m	11'4" x 9'5"
Balcony	6.7 sq m	72 sq ft



**Disclaimer:** All plans and images contained in this brochure are indicative only and must not be relied upon as being a true or accurate depiction of the relevant scene or area. Specifications, including measurements, dimensions, sizes and distances are approximate only and subject to change at any time without notice. Please note that the units come in different sizes and configurations depending on location within the building.



**Key**

ST – Storage  
W/D – Washer/Dryer  
F/F – Fridge freezer

## 2 Bedroom

### Type 3

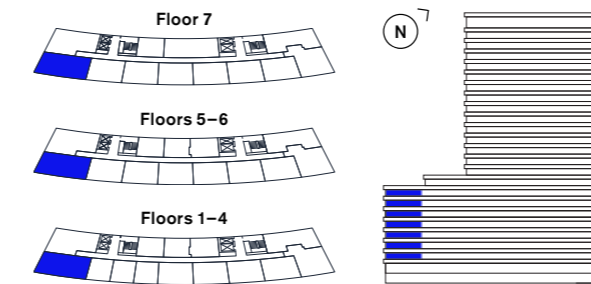
**Floors**

1, 2, 3, 4, 5, 6, 7

**Apartments**

110, 210, 310, 410, 509, 609, 709

Net Sales Area (NSA)	76.2 sq m	820 sq ft
Living/Kitchen/Dining	5.82m x 3.98m	19'1" x 13'1"
Bedroom 1	5.04m x 3.83m	16'6" x 12'7"
Bedroom 2	4.16m x 2.87m	13'8" x 9'5"
Balcony	6.6 sq m	71 sq ft



**Disclaimer:** All plans and images contained in this brochure are indicative only and must not be relied upon as being a true or accurate depiction of the relevant scene or area. Specifications, including measurements, dimensions, sizes and distances are approximate only and subject to change at any time without notice. Please note that the units come in different sizes and configurations depending on location within the building.

**Key**

ST – Storage  
W/D – Washer/Dryer  
F/F – Fridge freezer



## 2 Bedroom

### Type 4

**Floors**

1, 2, 3, 4, 5, 6, 7

**Apartments**

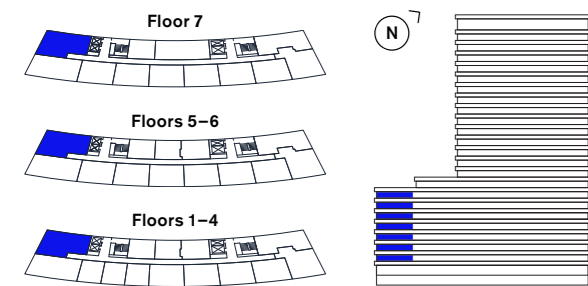
111, 211, 311, 411, 510, 610, 710

Net Sales Area (NSA)	77.3 sq m	832 sq ft
Living/Kitchen/Dining	7.10m x 3.97m	23'4" x 13'0"
Bedroom 1	5.42m x 3.20m	17'9" x 10'6"
Bedroom 2	5.40m x 2.89m	17'9" x 9'6"
Balcony	6.9 sq m	74 sq ft



**Key**

ST – Storage  
 W/D – Washer/Dryer  
 F/F – Fridge freezer



**Disclaimer:** All plans and images contained in this brochure are indicative only and must not be relied upon as being a true or accurate depiction of the relevant scene or area. Specifications, including measurements, dimensions, sizes and distances are approximate only and subject to change at any time without notice. Please note that the units come in different sizes and configurations depending on location within the building.

## 2 Bedroom

### Type 5

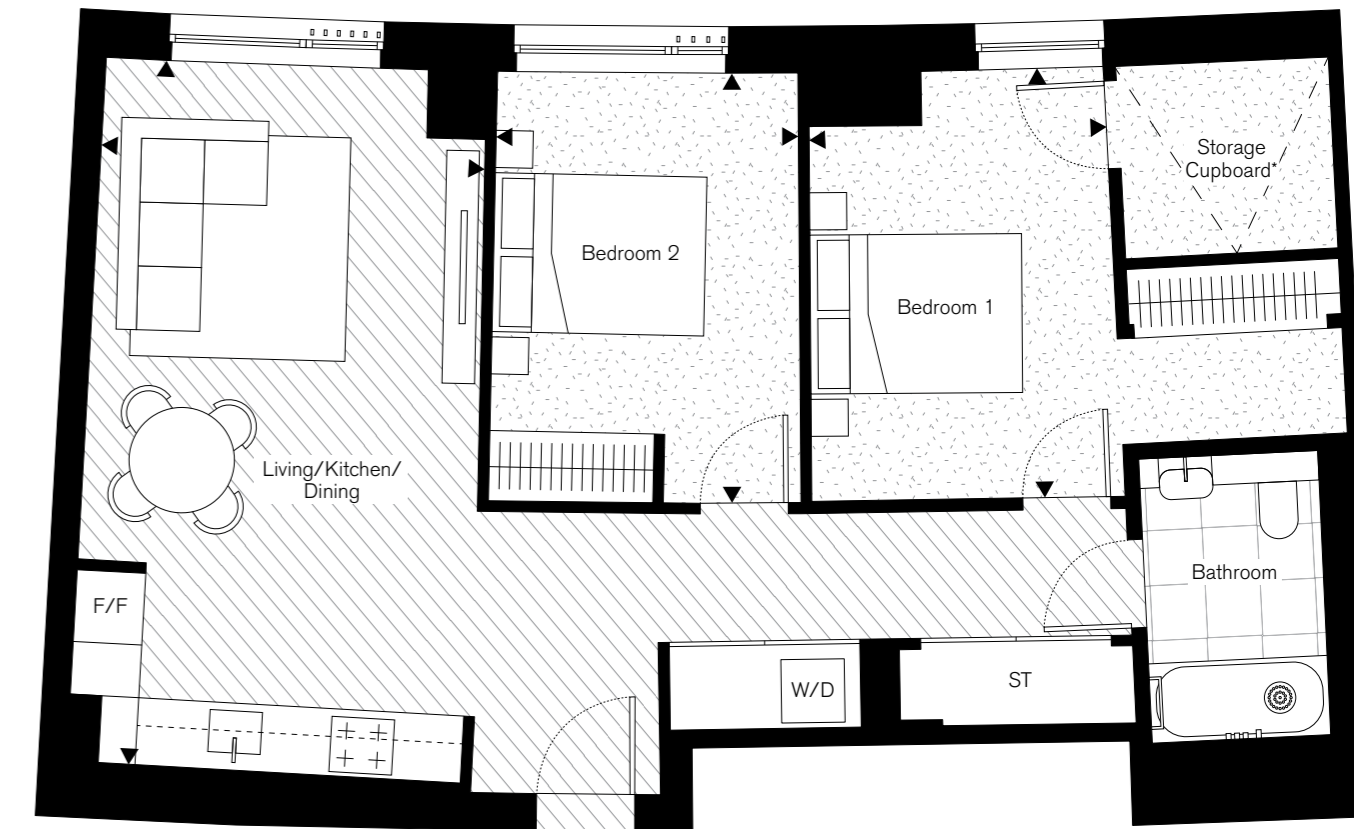
**Floors**

7

**Apartment**

712

Net Sales Area (NSA)	78.8 sq m	848 sq ft
Living/Kitchen/Dining	6.68m x 3.62m	21'11" x 11'11"
Bedroom 1	4.05m x 2.80m	13'3" x 9'2"
Bedroom 2	4.06m x 2.85m	13'4" x 9'4"



**Key**

ST – Storage  
 W/D – Washer/Dryer  
 F/F – Fridge freezer



**Disclaimer:** All plans and images contained in this brochure are indicative only and must not be relied upon as being a true or accurate depiction of the relevant scene or area. Specifications, including measurements, dimensions, sizes and distances are approximate only and subject to change at any time without notice. Please note that the units come in different sizes and configurations depending on location within the building.

\*Restricted height area (c.1.8m)

## 2 Bedroom

### Type 6

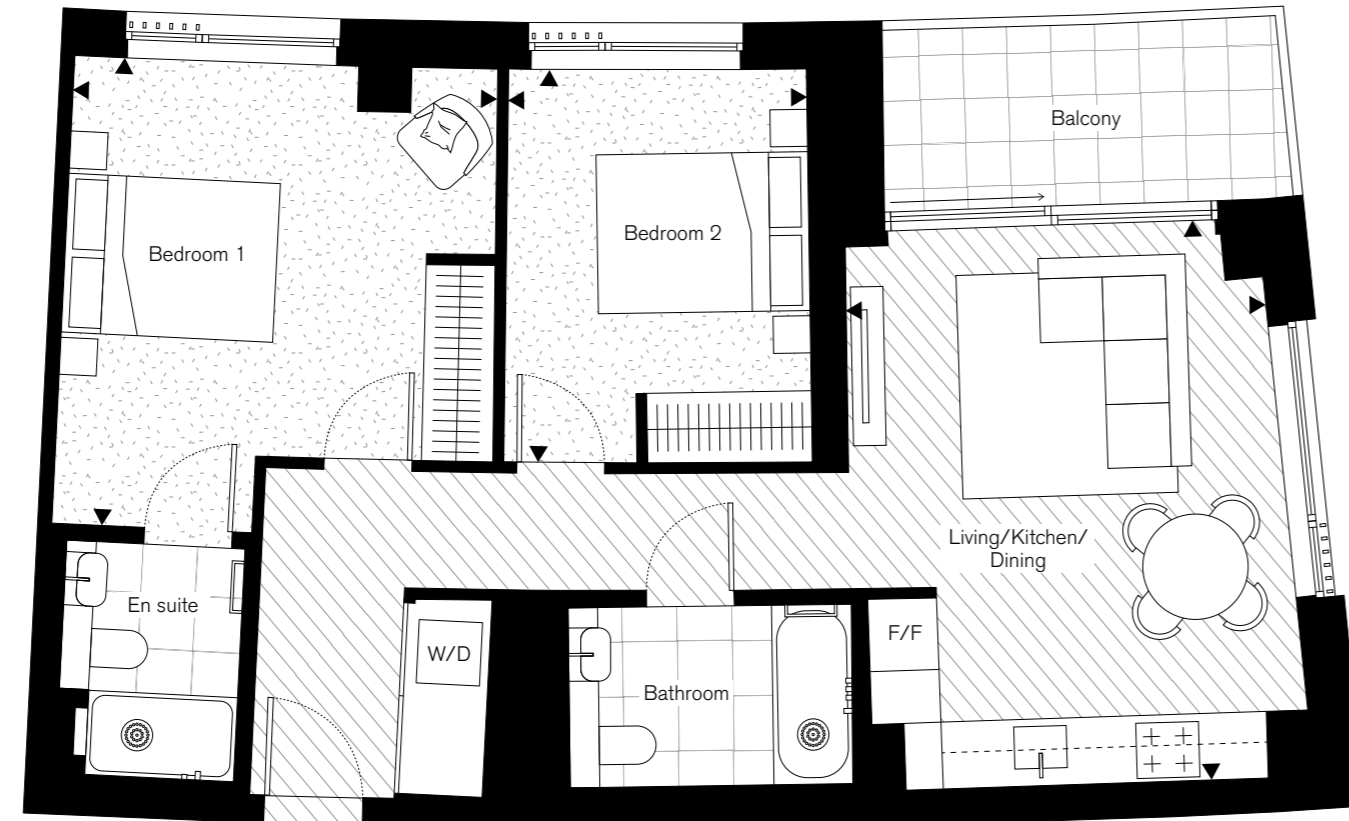
#### Floors

9, 10, 11, 12, 13, 14, 15, 16, 17, 18, 19, 20, 21

#### Apartments

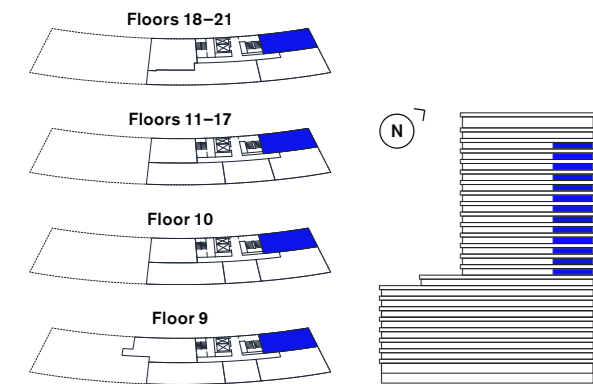
901, 1001, 1101, 1201, 1301, 1401, 1501, 1601, 1701, 1801, 1901, 2001, 2101

Net Sales Area (NSA)	73.0 sq m	786 sq ft
Living/Kitchen/Dining	5.31m x 3.96m	17'5" x 12'12"
Bedroom 1	4.42m x 4.01m	14'6" x 13'2"
Bedroom 2	3.71m x 2.82m	12'2" x 9'3"
Balcony	6.6 sq m	71 sq ft



#### Key

ST – Storage  
W/D – Washer/Dryer  
F/F – Fridge freezer



**Disclaimer:** All plans and images contained in this brochure are indicative only and must not be relied upon as being a true or accurate depiction of the relevant scene or area. Specifications, including measurements, dimensions, sizes and distances are approximate only and subject to change at any time without notice. Please note that the units come in different sizes and configurations depending on location within the building.

## 2 Bedroom

### Type 7

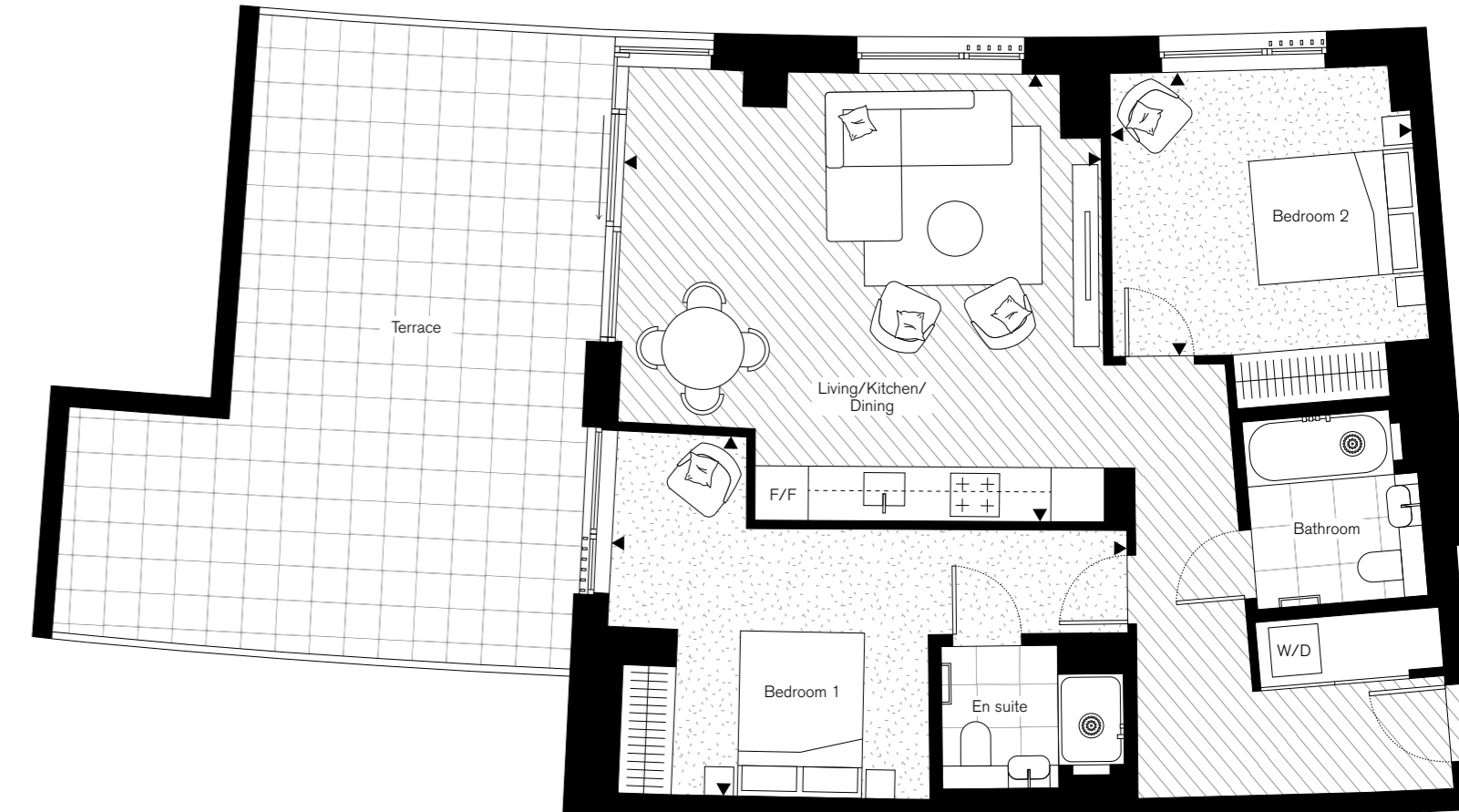
#### Floor

9

#### Apartment

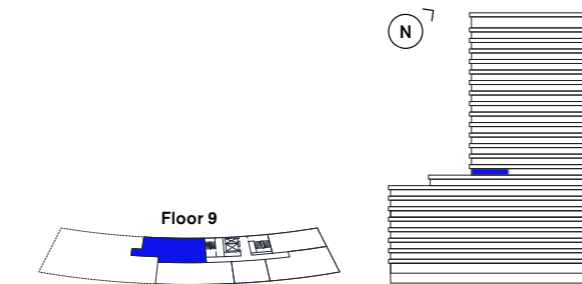
905

Net Sales Area (NSA)	87.0 sq m	936 sq ft
Living/Kitchen/Dining	5.76m x 5.40m	18'11" x 17'9"
Bedroom 1	6.23m x 4.36m	20'5" x 14'4"
Bedroom 2	3.67m x 3.43m	12'0" x 11'3"
Terrace	38.0 sq m	409 sq ft



#### Key

ST – Storage  
W/D – Washer/Dryer  
F/F – Fridge freezer



**Disclaimer:** All plans and images contained in this brochure are indicative only and must not be relied upon as being a true or accurate depiction of the relevant scene or area. Specifications, including measurements, dimensions, sizes and distances are approximate only and subject to change at any time without notice. Please note that the units come in different sizes and configurations depending on location within the building.

## 2 Bedroom

### Type 8

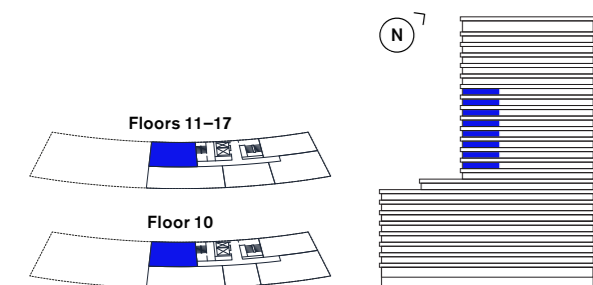
**Floors**

10, 11, 12, 13, 14, 15, 16, 17

**Apartments**

1005, 1105, 1205, 1305, 1405, 1505, 1605, 1705

Net Sales Area (NSA)	79.7 sq m	858 sq ft
Living/Kitchen/Dining	5.39m x 3.87m	17'8" x 12'8"
Bedroom 1	6.23m x 5.00m	20'5" x 16'5"
Bedroom 2	3.64m x 3.37m	11'11" x 11'1"
Balcony	7.0 sq m	75 sq ft



**Disclaimer:** All plans and images contained in this brochure are indicative only and must not be relied upon as being a true or accurate depiction of the relevant scene or area. Specifications, including measurements, dimensions, sizes and distances are approximate only and subject to change at any time without notice. Please note that the units come in different sizes and configurations depending on location within the building.



**Key**

ST – Storage  
W/D – Washer/Dryer  
F/F – Fridge freezer

## 2 Bedroom

### Type 9

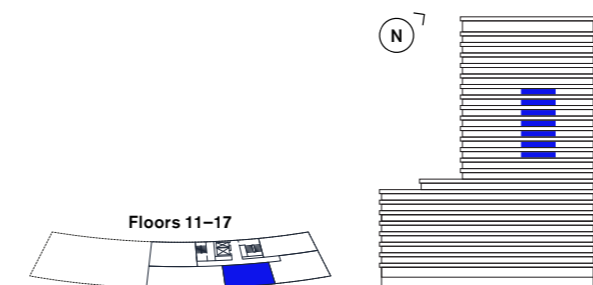
**Floors**

11, 12, 13, 14, 15, 16, 17

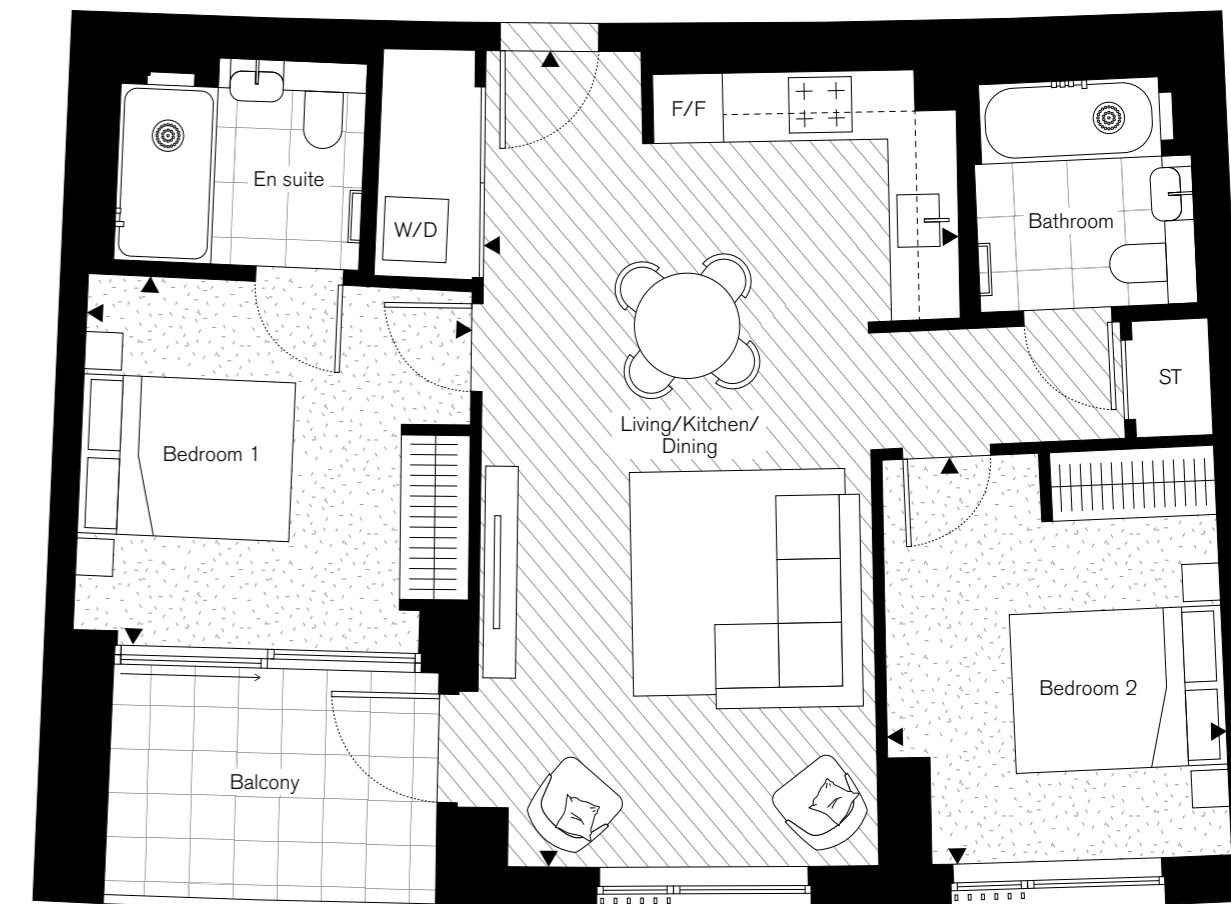
**Apartments**

1103, 1203, 1303, 1403, 1503, 1603, 1703

Net Sales Area (NSA)	74.6 sq m	803 sq ft
Living/Kitchen/Dining	7.71m x 4.47m	25'4" x 14'8"
Bedroom 1	3.64m x 3.48m	11'11" x 11'5"
Bedroom 2	3.84m x 3.21m	12'7" x 10'6"
Balcony	6.8 sq m	73 sq ft



**Disclaimer:** All plans and images contained in this brochure are indicative only and must not be relied upon as being a true or accurate depiction of the relevant scene or area. Specifications, including measurements, dimensions, sizes and distances are approximate only and subject to change at any time without notice. Please note that the units come in different sizes and configurations depending on location within the building.



**Key**

ST – Storage  
W/D – Washer/Dryer  
F/F – Fridge freezer

## 2 Bedroom

Type 10 (Wheelchair adaptable)

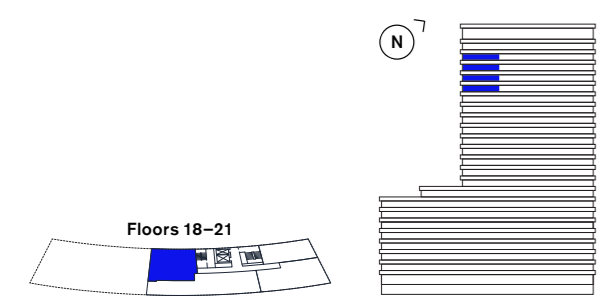
**Floors**

18, 19, 20, 21

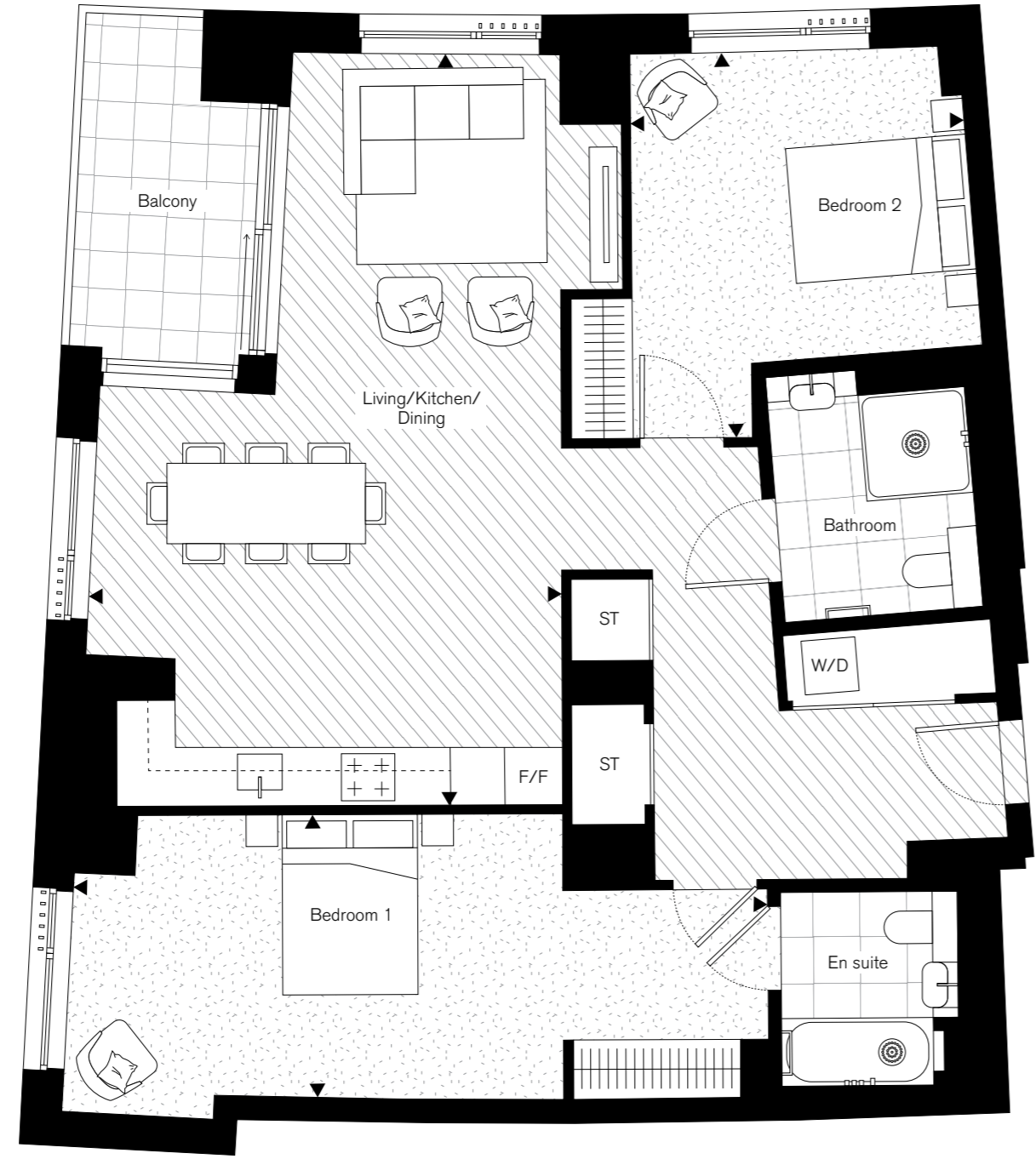
**Apartments**

1804, 1904, 2004, 2104

Net Sales Area (NSA)	108.7 sq m	1,170 sq ft
Living/Kitchen/Dining	8.33m x 5.23m	27'4" x 17'2"
Bedroom 1	7.70m x 3.14m	25'3" x 10'4"
Bedroom 2	4.27m x 3.72m	14'0" x 12'2"
Balcony	7.0 sq m	75 sq ft



**Disclaimer:** All plans and images contained in this brochure are indicative only and must not be relied upon as being a true or accurate depiction of the relevant scene or area. Specifications, including measurements, dimensions, sizes and distances are approximate only and subject to change at any time without notice. Please note that the units come in different sizes and configurations depending on location within the building.



**Key**  
 ST – Storage  
 W/D – Washer/Dryer  
 F/F – Fridge freezer

# 3 Bedroom

Apartments

## 3 Bedroom Type 1

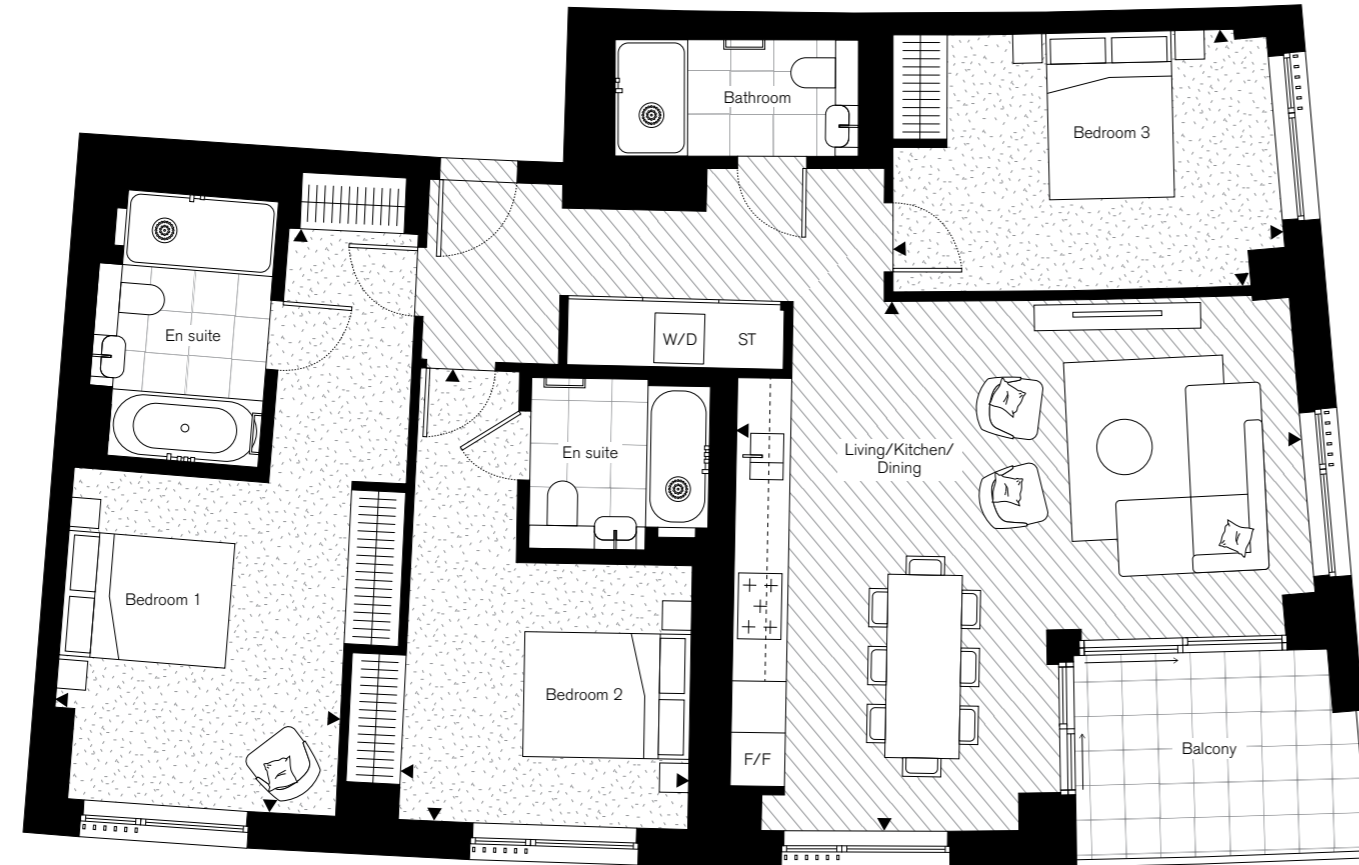
**Floors**

9, 10

**Apartments**

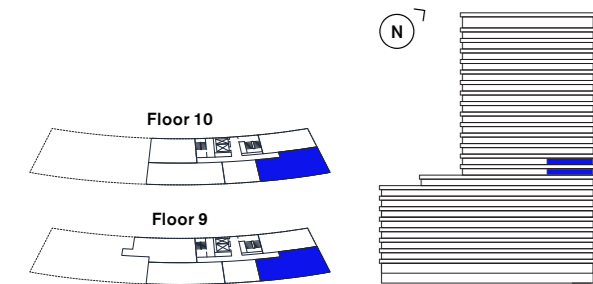
902, 1002

Net Sales Area (NSA)	122.2 sq m	1,315 sq ft
Living/Kitchen/Dining	6.79m x 6.37m	22'3" x 20'11"
Bedroom 1	7.03m x 3.44m	23'1" x 11'3"
Bedroom 2	5.44m x 3.47m	17'10" x 11'5"
Bedroom 3	4.69m x 3.09m	15'5" x 10'2"
Balcony	8.2 sq m	88 sq ft



**Key**

ST – Storage  
W/D – Washer/Dryer  
F/F – Fridge freezer



**Disclaimer:** All plans and images contained in this brochure are indicative only and must not be relied upon as being a true or accurate depiction of the relevant scene or area. Specifications, including measurements, dimensions, sizes and distances are approximate only and subject to change at any time without notice. Please note that the units come in different sizes and configurations depending on location within the building.

## 3 Bedroom Type 2 (Wheelchair adaptable)

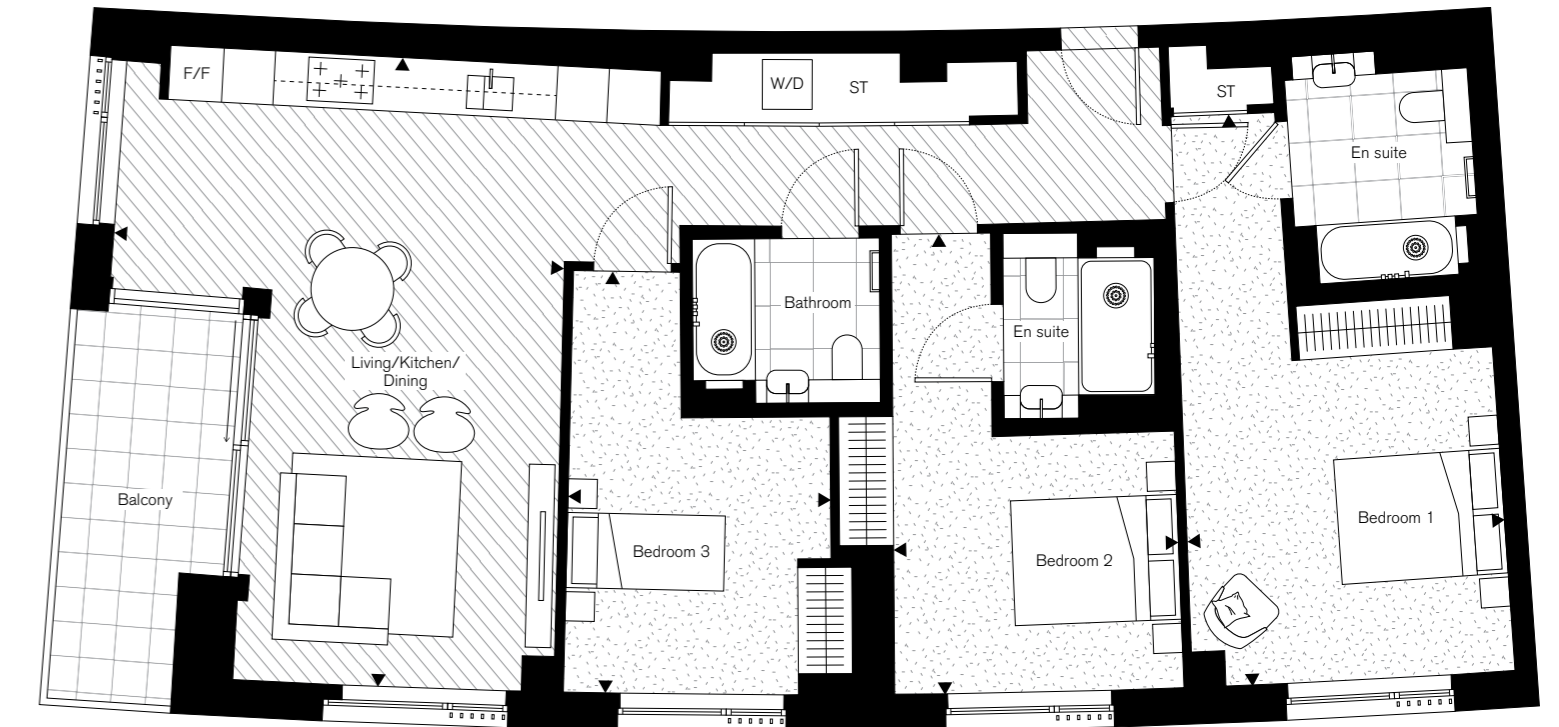
**Floors**

9, 10, 11, 12, 13, 14, 15, 16, 17

**Apartments**

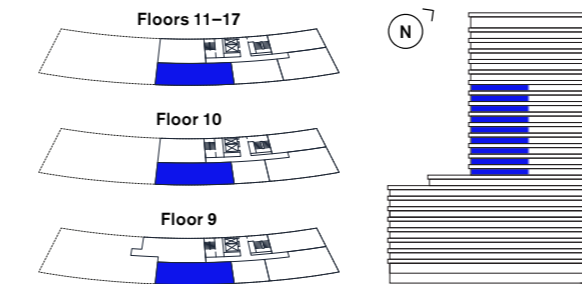
904, 1004, 1104, 1204, 1304, 1404, 1504, 1604, 1704

Net Sales Area (NSA)	120.1 sq m	1,293 sq ft
Living/Kitchen/Dining	7.56m x 5.42m	24'10" x 17'9"
Bedroom 1	6.86m x 3.83m	22'6" x 12'7"
Bedroom 2	5.53m x 3.42m	18'2" x 11'3"
Bedroom 3	5.07m x 3.18m	16'8" x 10'5"
Balcony	8.7 sq m	94 sq ft



**Key**

ST – Storage  
W/D – Washer/Dryer  
F/F – Fridge freezer



**Disclaimer:** All plans and images contained in this brochure are indicative only and must not be relied upon as being a true or accurate depiction of the relevant scene or area. Specifications, including measurements, dimensions, sizes and distances are approximate only and subject to change at any time without notice. Please note that the units come in different sizes and configurations depending on location within the building.

# 3 Bedroom

## Type 3

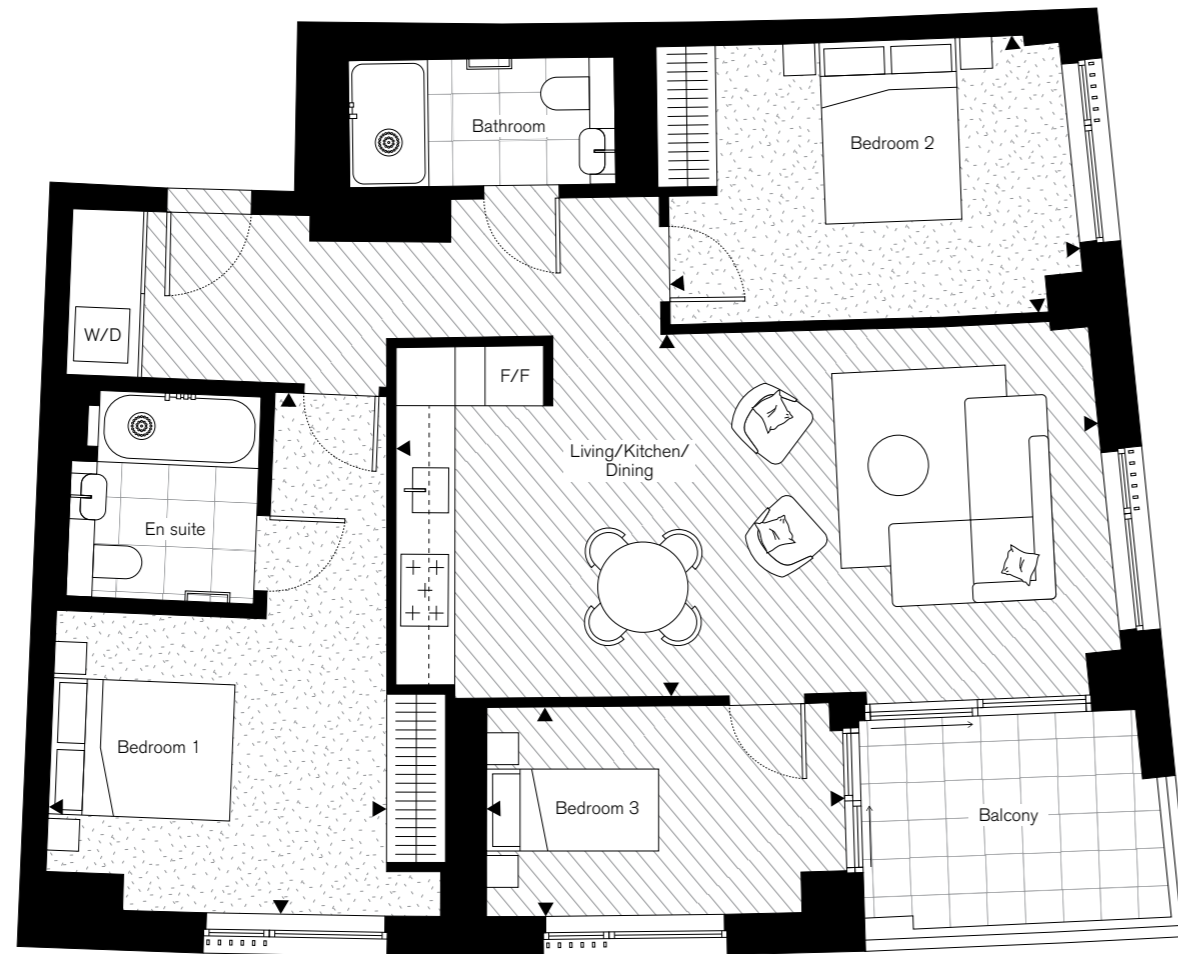
**Floors**

11, 12, 13, 14, 15, 16, 17

**Apartments**

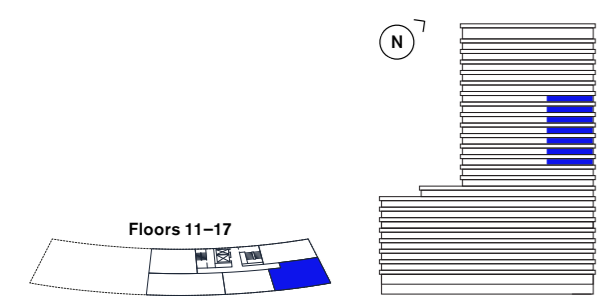
1102, 1202, 1302, 1402, 1502, 1602, 1702

Net Sales Area (NSA)	97.2 sq m	1,046 sq ft
Living/Kitchen/Dining	7.74m x 4.00m	25'5" x 13'1"
Bedroom 1	5.75m x 3.71m	18'10" x 12'2"
Bedroom 2	4.53m x 3.07m	14'10" x 10'1"
Bedroom 3	3.95m x 2.30m	12'12" x 7'7"
Balcony	8.2 sq m	88 sq ft



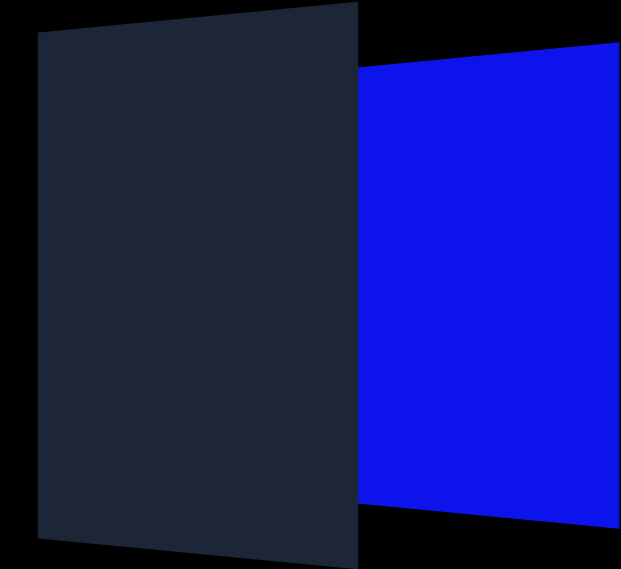
**Key**

- ST – Storage
- W/D – Washer/Dryer
- F/F – Fridge freezer



**Disclaimer:** All plans and images contained in this brochure are indicative only and must not be relied upon as being a true or accurate depiction of the relevant scene or area. Specifications, including measurements, dimensions, sizes and distances are approximate only and subject to change at any time without notice. Please note that the units come in different sizes and configurations depending on location within the building.

# Premium



Apartments

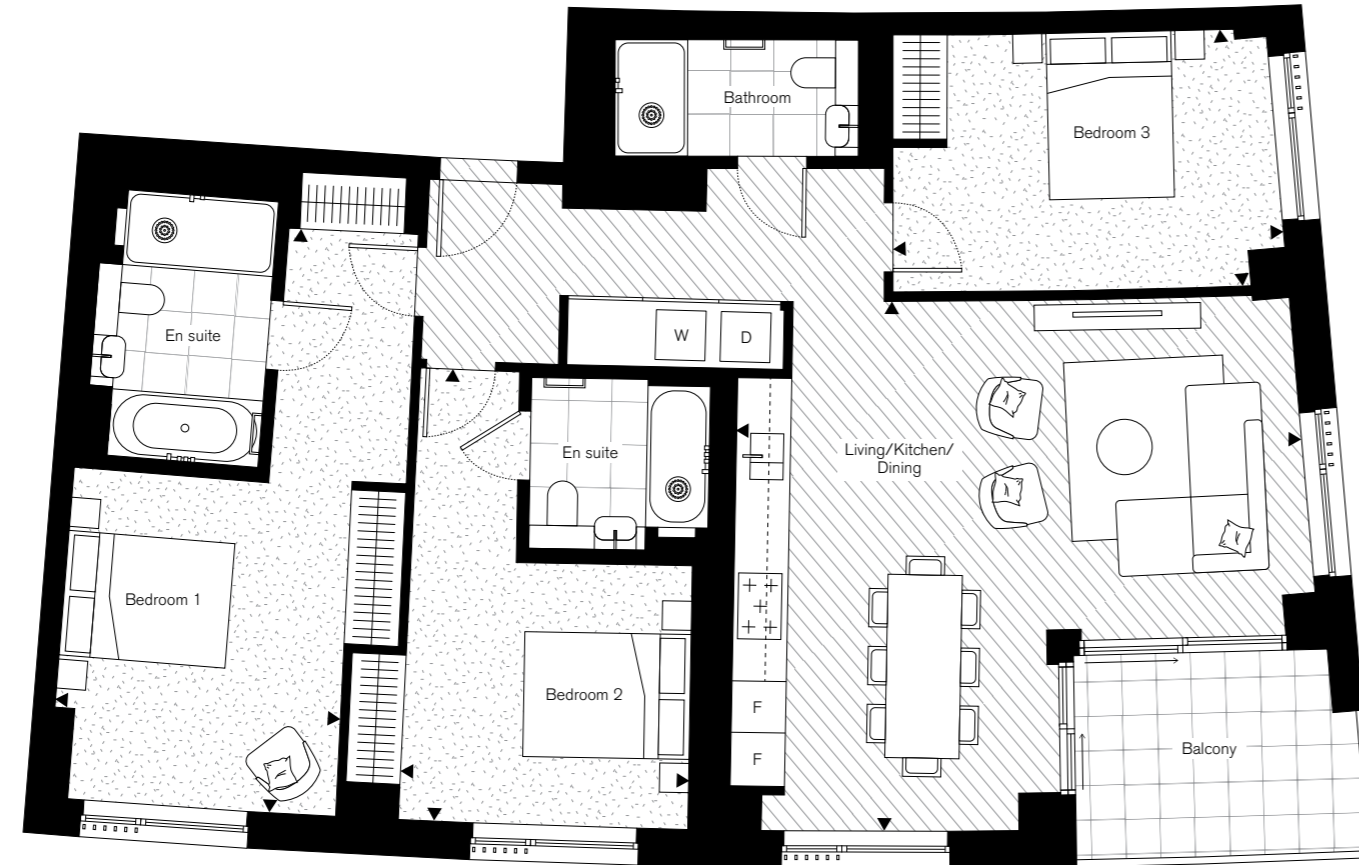
# 3 Bedroom

## Type 1

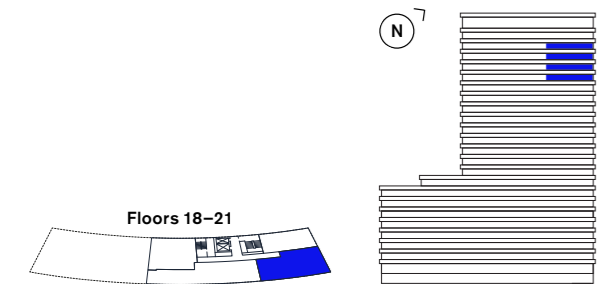
**Floors**  
18, 19, 20, 21

**Apartments**  
1802, 1902, 2002, 2102

Net Sales Area (NSA)	122.2 sq m	1,315 sq ft
Living/Kitchen/Dining	6.79m x 6.37m	22'3" x 20'11"
Bedroom 1	7.03m x 3.44m	23'1" x 11'3"
Bedroom 2	5.44m x 3.47m	17'10" x 11'5"
Bedroom 3	4.69m x 3.09m	15'5" x 10'2"
Balcony	8.2 sq m	88 sq ft



**Key**  
ST – Storage  
W – Washing machine  
D – Tumble dryer  
F – Fridge  
F – Freezer



**Disclaimer:** All plans and images contained in this brochure are indicative only and must not be relied upon as being a true or accurate depiction of the relevant scene or area. Specifications, including measurements, dimensions, sizes and distances are approximate only and subject to change at any time without notice. Please note that the units come in different sizes and configurations depending on location within the building.

# 3 Bedroom

## Type 4 (Wheelchair adaptable)

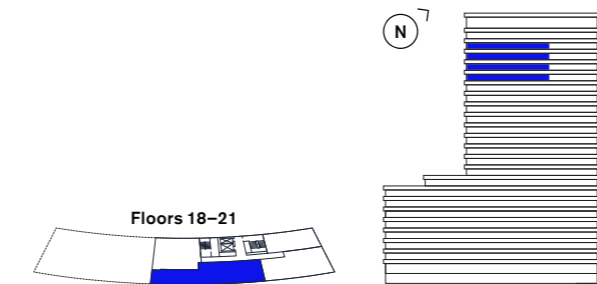
**Floors**  
18, 19, 20, 21

**Apartments**  
1803, 1903, 2003, 2103

Net Sales Area (NSA)	149.8 sq m	1,612 sq ft
Kitchen	6.90m x 3.55m	22'8" x 11'8"
Living/Dining	7.47m x 4.88m	24'6" x 16'0"
Bedroom 1	6.88m x 3.80m	22'7" x 12'6"
Bedroom 2	5.53m x 3.19m	18'2" x 10'6"
Bedroom 3	5.56m x 4.08m	18'3" x 13'5"
Balcony	8.5 sq m	91 sq ft



**Key**  
ST – Storage  
W – Washing machine  
D – Tumble dryer  
F – Fridge  
F – Freezer

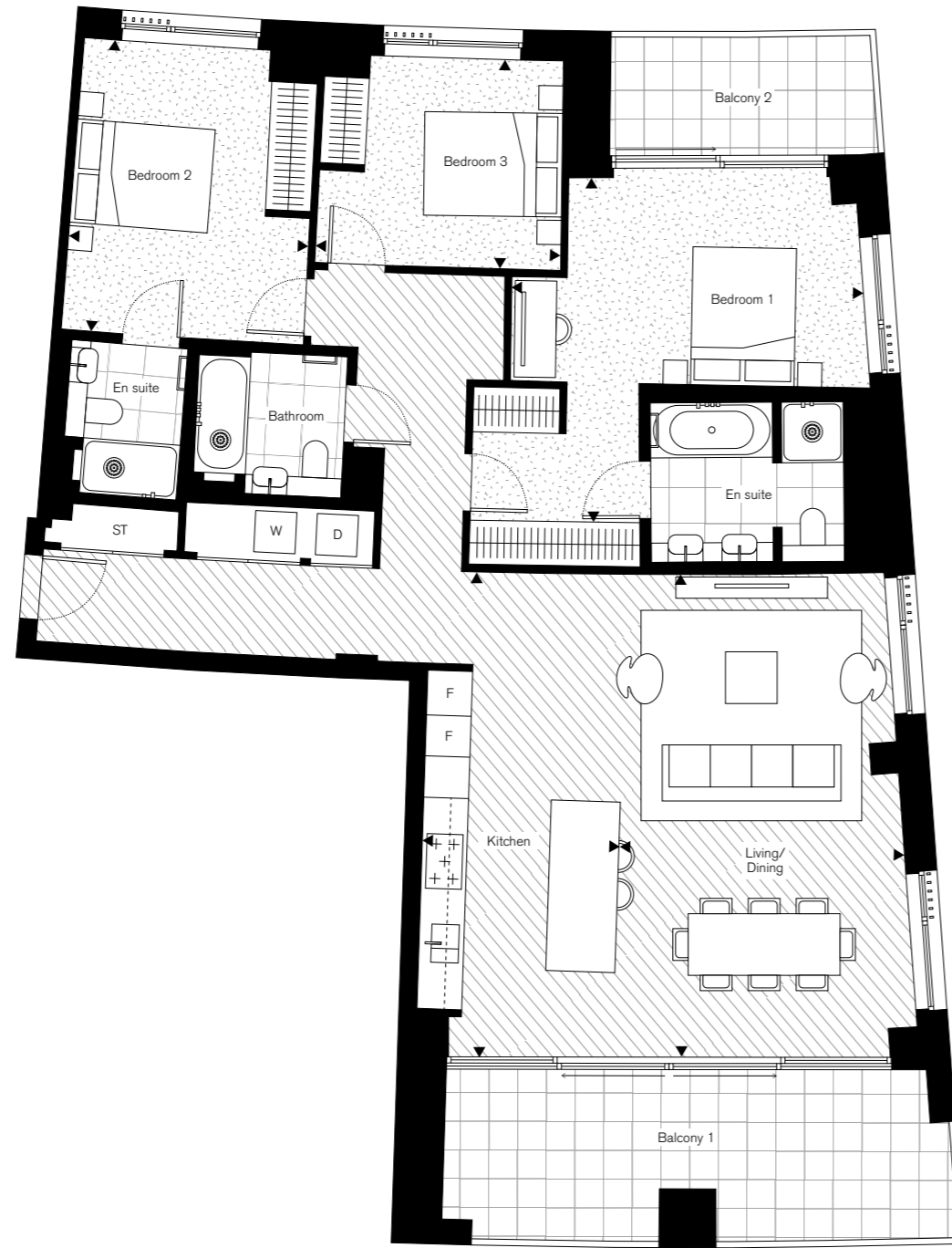


**Disclaimer:** All plans and images contained in this brochure are indicative only and must not be relied upon as being a true or accurate depiction of the relevant scene or area. Specifications, including measurements, dimensions, sizes and distances are approximate only and subject to change at any time without notice. Please note that the units come in different sizes and configurations depending on location within the building.

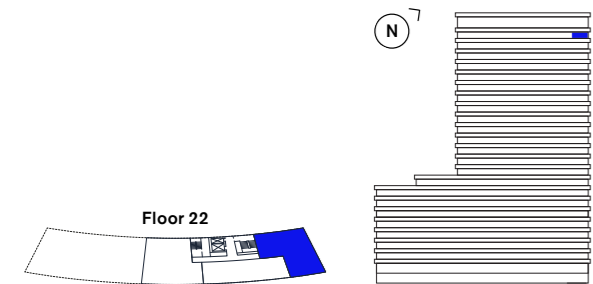
# 3 Bedroom

## Type 5

<b>Floor</b>	22	
<b>Apartment</b>	2201	
<b>Net Sales Area (NSA)</b>	<b>135.7 sq m</b>	<b>1,461 sq ft</b>
Kitchen	7.02m x 2.83m	23'0" x 9'3"
Living/Dining	6.99m x 4.14m	22'11" x 13'7"
Bedroom 1	5.08m x 4.99m	16'8" x 16'4"
Bedroom 2	4.23m x 3.48m	13'11" x 11'5"
Bedroom 3	3.54m x 3.03m	11'7" x 9'11"
Balcony 1	17.3 sq m	186 sq ft
Balcony 2	6.6 sq m	71 sq ft



**Key**  
 ST – Storage  
 W – Washing machine  
 D – Tumble dryer  
 F – Fridge  
 F – Freezer

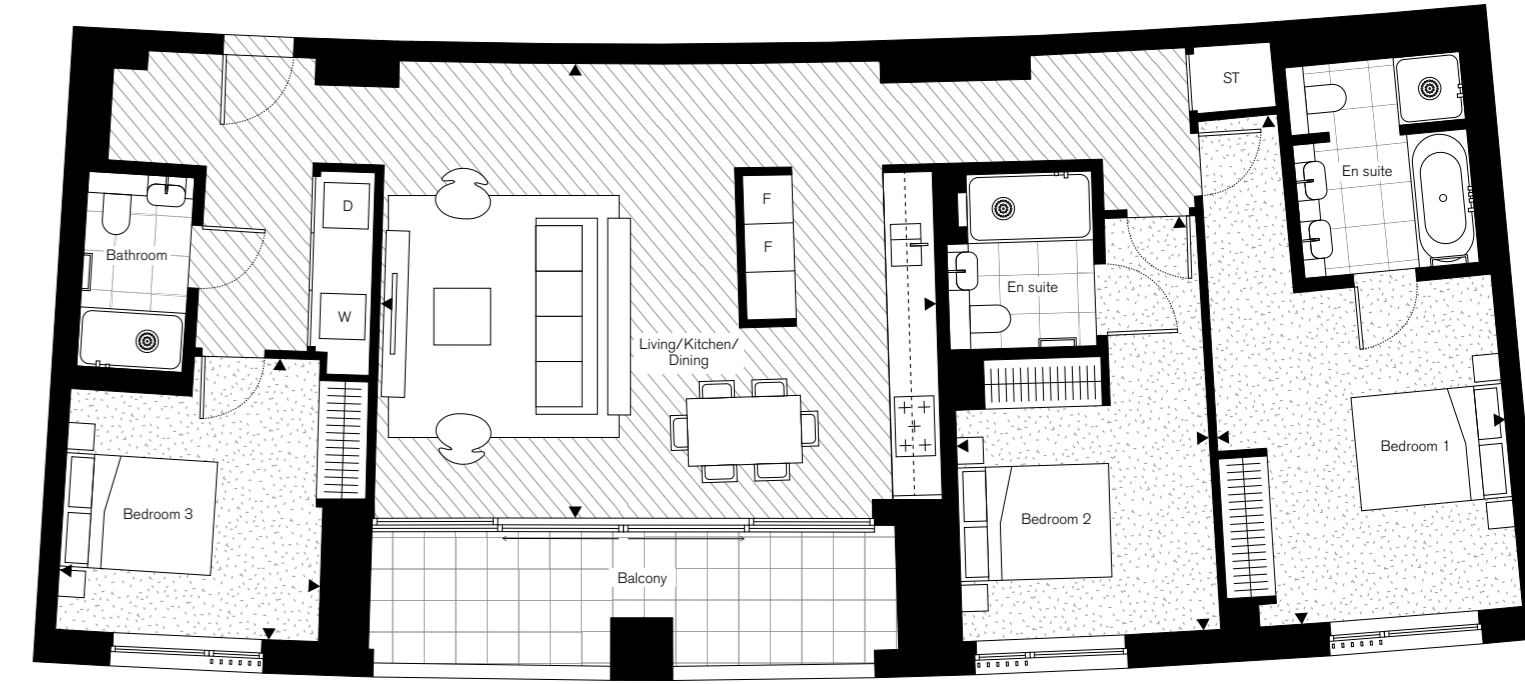


**Disclaimer:** All plans and images contained in this brochure are indicative only and must not be relied upon as being a true or accurate depiction of the relevant scene or area. Specifications, including measurements, dimensions, sizes and distances are approximate only and subject to change at any time without notice. Please note that the units come in different sizes and configurations depending on location within the building.

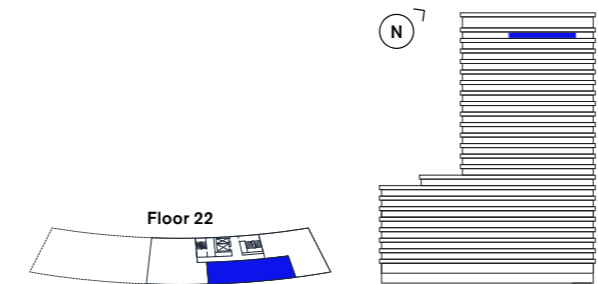
# 3 Bedroom

## Type 6

<b>Floor</b>	22	
<b>Apartment</b>	2202	
<b>Net Sales Area (NSA)</b>	<b>130.3 sq m</b>	<b>1,403 sq ft</b>
Living/Kitchen/Dining	5.97m x 7.15m	19'7" x 23'5"
Bedroom 1	6.74m x 3.82m	22'1" x 12'6"
Bedroom 2	5.49m x 3.34m	18'0" x 10'11"
Bedroom 3	3.79m x 3.45m	12'5" x 11'4"
Balcony	11.7 sq m	126 sq ft



**Key**  
 ST – Storage  
 W – Washing machine  
 D – Tumble dryer  
 F – Fridge  
 F – Freezer

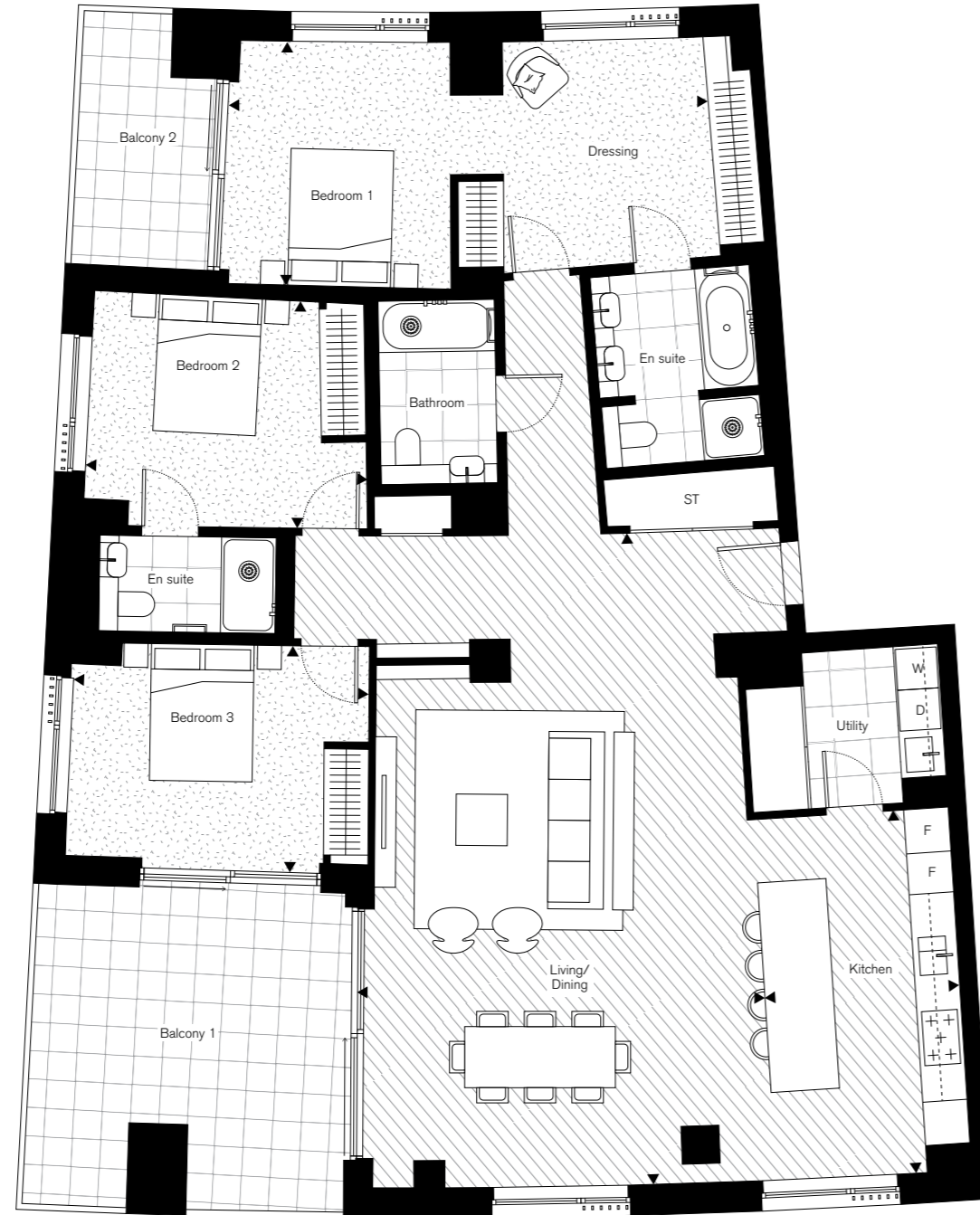


**Disclaimer:** All plans and images contained in this brochure are indicative only and must not be relied upon as being a true or accurate depiction of the relevant scene or area. Specifications, including measurements, dimensions, sizes and distances are approximate only and subject to change at any time without notice. Please note that the units come in different sizes and configurations depending on location within the building.

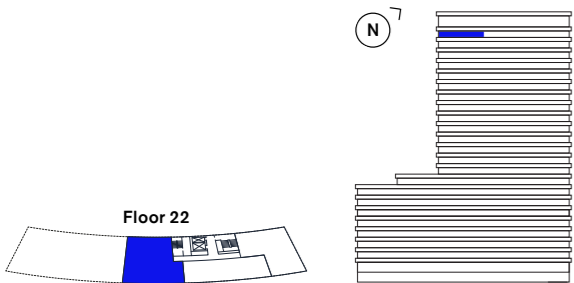
# 3 Bedroom

## Type 7

<b>Floor</b>	22	
<b>Apartment</b>	2203	
<b>Net Sales Area (NSA)</b>	<b>161.2 sq m</b>	<b>1,735 sq ft</b>
Kitchen	5.31m x 2.83m	17'5" x 9'3"
Living/Dining	9.53m x 5.85m	31'3" x 19'2"
Bedroom 1	6.96m x 3.56m	22'10" x 11'8"
Bedroom 2	4.12m x 3.35m	13'6" x 11'0"
Bedroom 3	4.26m x 3.31m	14'0" x 10'10"
Balcony 1	21.1 sq m	227 sq ft
Balcony 2	6.8 sq m	73 sq ft



**Key**  
 ST – Storage  
 W – Washing machine  
 D – Tumble dryer  
 F – Fridge  
 F – Freezer



**Disclaimer:** All plans and images contained in this brochure are indicative only and must not be relied upon as being a true or accurate depiction of the relevant scene or area. Specifications, including measurements, dimensions, sizes and distances are approximate only and subject to change at any time without notice. Please note that the units come in different sizes and configurations depending on location within the building.

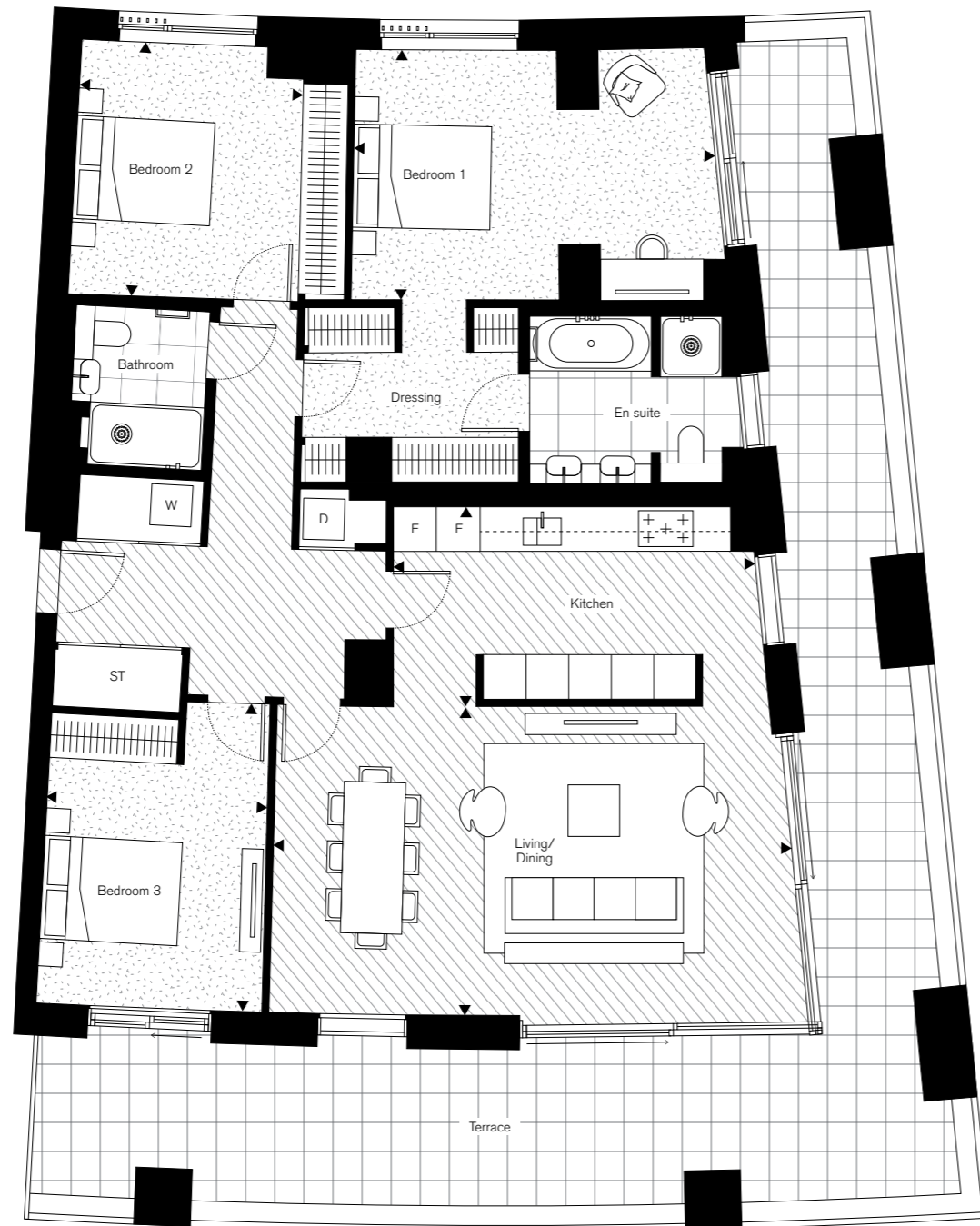
# Penthouse

Apartments

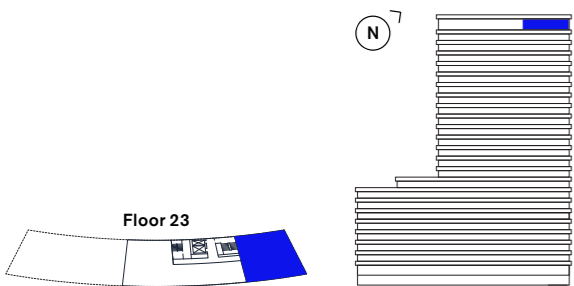
# 3 Bedroom Penthouse

## Type 1

<b>Floor</b>	23	
<b>Apartment</b>	2301	
<b>Net Sales Area (NSA)</b>	<b>142.8 sq m</b>	<b>1,537 sq ft</b>
Kitchen	5.36m x 2.92m	17'7" x 9'7"
Living/Dining	7.49m x 4.49m	24'7" x 14'9"
Bedroom 1	5.25m x 3.64m	17'3" x 11'1"
Bedroom 2	4.48m x 3.21m	14'8" x 10'6"
Bedroom 3	3.69m x 3.25m	12'1" x 10'8"
Terrace	61.8 sq m	665 sq ft



**Key**  
 ST – Storage  
 W – Washing machine  
 D – Tumble dryer  
 F – Fridge  
 F – Freezer



**Disclaimer:** All plans and images contained in this brochure are indicative only and must not be relied upon as being a true or accurate depiction of the relevant scene or area. Specifications, including measurements, dimensions, sizes and distances are approximate only and subject to change at any time without notice. Please note that the units come in different sizes and configurations depending on location within the building.

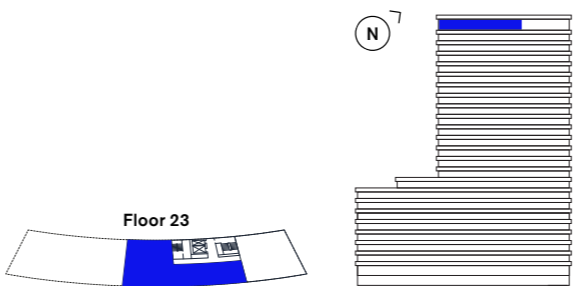
# 3 Bedroom Penthouse

## Type 2

<b>Floor</b>	23	
<b>Apartment</b>	2302	
<b>Net Sales Area (NSA)</b>	<b>190.3 sq m</b>	<b>2,048 sq ft</b>
Kitchen	4.94m x 3.81m	16'2" x 12'6"
Living/Dining	8.80m x 5.02m	28'10" x 16'6"
Bedroom 1	7.64m x 5.68m	25'1" x 18'8"
Bedroom 2	4.96m x 3.15m	16'3" x 10'4"
Bedroom 3	3.55m x 3.35m	11'8" x 10'2"
Study	3.41m x 3.14m	11'2" x 10'4"
Terrace	100.6 sq m	1,083 sq ft



**Key**  
 ST – Storage  
 W – Washing machine  
 D – Tumble dryer  
 F – Fridge  
 F – Freezer

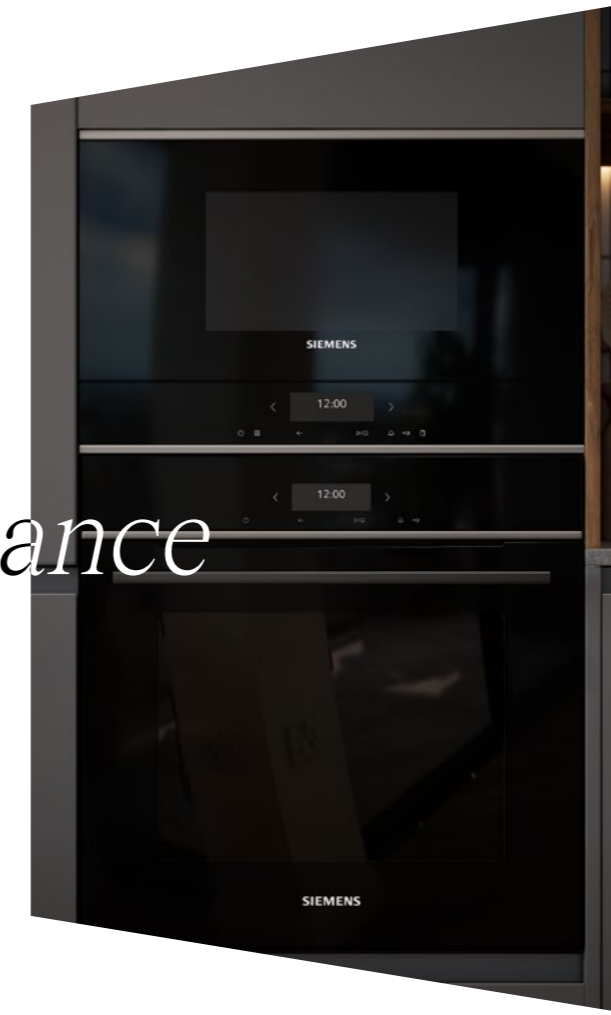


**Disclaimer:** All plans and images contained in this brochure are indicative only and must not be relied upon as being a true or accurate depiction of the relevant scene or area. Specifications, including measurements, dimensions, sizes and distances are approximate only and subject to change at any time without notice. Please note that the units come in different sizes and configurations depending on location within the building.

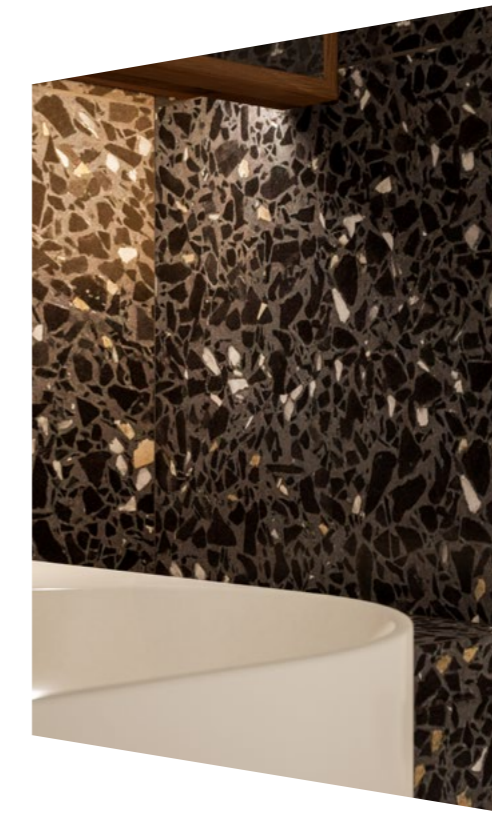


# Specifications

## At a glance



Kitchen



Bathroom

Lutron smart lighting system

Combined heating & comfort cooling

Engineered timber flooring

Fitted wardrobes

Italian kitchens

Siemens & AEG appliances

Terrazzo tiled bathroom vanity

Brushed nickel sanitaryware

## Standard apartments

### Floor to ceiling height

- Maximum 2.65m clear floor to ceiling height (2.4m in hallways and bathrooms)

### Flooring

- Engineered timber flooring to entrance, living area and hallway
- Carpet to bedrooms

### Doors

- Full-height solid core timber entrance door and panel
- Solid core white painted internal doors
- Brushed steel ironmongery

### Decoration

- Painted finish to internal walls, ceiling, skirting and door frames
- Recess for curtains/blinds in living area and bedrooms

### Kitchen

- European kitchen units
- Handleless base units with matt lacquer finish doors, internal shelves and cutlery drawer insert. Upper units with timber veneered doors and frame detail, internal shelves
- Timber veneered open shelving
- Composite stone worktop
- Full height tiled splashback
- Under-mounted stainless steel sink and brushed stainless steel deck mounted mixer tap
- Combined waste/recycling bins to lower base unit (under sink unit)
- Linear LED lighting below kitchen wall units

### Kitchen appliances

*(integrated unless otherwise stated)*

#### Studios

- Siemens (or equivalent) under counter fridge with freezer compartment
- Siemens (or equivalent) single oven
- Siemens (or equivalent) 4-ring induction hob
- Siemens (or equivalent) extractor
- Siemens (or equivalent) dishwasher
- Freestanding AEG (or equivalent) combined washing machine/tumble dryer (in utility cupboard)

#### 1, 2 & 3 Beds

- Siemens (or equivalent) fridge/freezer
- Siemens (or equivalent) multifunction oven
- Siemens (or equivalent) 4-ring induction hob (5-ring in 3 bed apartments)
- Siemens (or equivalent) microwave (2 & 3 bed apartments)
- Siemens (or equivalent) extractor
- Siemens (or equivalent) dishwasher
- Freestanding AEG (or equivalent) combined washing machine/tumble dryer (in utility cupboard)
- Wine fridge (2 & 3 bed apartments)

### Wardrobes

- Fitted wardrobes with matt lacquer doors (ribbed centre panel to master bedrooms), textured interiors with hat shelf and hanging rail
- Vertical LED lighting to master bedroom wardrobe interiors

### Balconies

- Inset balcony with part-solid and part-metal railings (where applicable)

### Bathrooms

- Ceramic wall tiles to selected walls
- Terrazzo style tiled feature vanity unit
- Porcelain floor tiles
- Bespoke wall-mounted cabinet, mirrored cupboard with demister pad, internal shelving, shaver socket and timber veneered open shelving
- Electric heated towel rail
- Inset white ceramic basin with wall-mounted mixer tap in brushed nickel
- White ceramic wall-mounted WC
- 2-button flush plate in brushed stainless steel
- White enamelled steel bath with glazed shower screen, fixed shower head, wall mounted thermostatic mixer and hand shower in brushed nickel
- Glazed shower enclosure with white shower tray, fixed shower head, wall mounted thermostatic mixer and hand shower in brushed nickel (ensuite bathrooms in 2 & 3 bedroom units only, where applicable)

### Heating, cooling & ventilation

- Energy centre providing metered hot water and heating to all apartments
- Combined heating and comfort cooling provided to habitable rooms
- Thermostatic control to habitable rooms
- Underfloor heating to bathrooms
- Heated towel rail to bathrooms
- MVHR ventilation unit in utility cupboard

### Lighting

- Lutron smart lighting system
- Remote and mobile control (via Lutron App) with dimmer function, where appropriate
- Energy efficient downlighters
- LED feature lighting bathrooms
- Provision for future installation of pendant fitting over kitchen peninsula and island units (where applicable)

### Power, AV, data and telephone systems

- Power sockets with white faceplates throughout; integrated USB ports to kitchen and bedrooms
- Television, telephone and data points to reception room, master bedrooms and study areas (where applicable)
- Video entry system linked to concierge
- High speed internet connection and satellite connection for television (purchasers are responsible for their own connections and related costs), comprising:
  - Provision for Astra (Sky TV) or terrestrial television (Freeview)
  - Infrastructure for Hyperoptic, Openreach and Virgin Media

For Premium and Penthouse specifications please contact the appointed sales agents.



# Contact Us

## Marketing Suite

5 Television Centre  
101 Wood Lane  
London W12 7FW

+44 (0)20 3005 3960

[televisioncentre.com](http://televisioncentre.com)



## Developer



## Development Manager



## Sales Agents



**Important notice:** Savills, Knight Frank and their clients give notice that: 1. They are not authorised to make or give any representations or warranties in relation to the property either here or elsewhere, either on their own behalf or on behalf of their client or otherwise. They assume no responsibility for any statement that may be made in these particulars. These particulars do not form part of any offer or contract and must not be relied upon as statements or representations of fact. 2. Any areas, measurements or distances are approximate. The text, computer generated image, drawings, specifications and plans are for guidance only and are not necessarily comprehensive. It should not be assumed that the property has all necessary planning, building regulation or other consents and we have not tested any services, equipment or facilities. Purchasers must satisfy themselves by inspection or otherwise. 3. These particulars were prepared from preliminary plans and specifications before the completion of the properties. These particulars, together with any images that they contain, are intended only as a guide. They may have been changed during construction and final finishes could vary. Prospective purchasers should not rely on this information but must get their solicitor to check the plans and specification attached to their contract. 4. Financial Crime: In accordance with the Money Laundering, Terrorist Financing and Transfer of Funds (Information on the Payer) Regulations 2017 and Proceeds of Crime Act 2002, we may be required to establish the identity and source of funds of all parties to property transactions. October 2025.



[televisioncentre.com](http://televisioncentre.com)