

# *The Ariel*

Floorplans

**TELEVISION CENTRE**

# Contents

<i>Television Centre</i>	<i>Amenities</i>	<i>Apartments</i>	<i>Contact Us</i>
Page 02	Page 07	Page 36	Page 76
<i>The Ariel</i>	<i>Floorplans</i>	<i>Specifications</i>	
Page 04	Page 10	Page 72	





# The Home of Expression

Television Centre, former home of the BBC, set the foundation for the future. Now, it charts a new course as West London's cultural core. A place for individuals everywhere to come together. To live, work, meet and explore. To live out who they really are among the homes, offices, dining and entertainment destinations that call White City their own.

## Estate Map

### Residential

- 01 The Ariel  
Future apartments
- 02 Scenery House  
Future apartments
- 03a 1–17 Forbes Gardens  
Future townhouses
- 03b 18–30 Forbes Gardens  
Future townhouses
- 04 The Helios  
Completed apartments
- 05 The Crescent  
Completed apartments
- 06 MacFarlane Place  
Completed apartments

### Offices

- 07 1 Television Centre  
Offices
- 08 2 Television Centre  
Offices & co-working
- 09 1 Wood Crescent  
Offices

### Amenities

- 10 Television Studios  
BBC Studioworks
- 11 Residents' Gym & Pool  
Managed by Soho House
- 12 White City House  
Private members club  
by Soho House
- 13 Electric Cinema  
by Soho House
- 14 The Broadcaster  
Pub & rooftop bar
- 15 Flying Horse Coffee  
Coffee house
- 16 Endo at the Rotunda  
Michelin Star restaurant
- 17 The Black Farmer  
Farm shop & café
- 18 The Studio Space  
Multi-use studio space

Floorplans



Residential under construction Completed offices & residential Amenities Future residential



# *The Ariel*

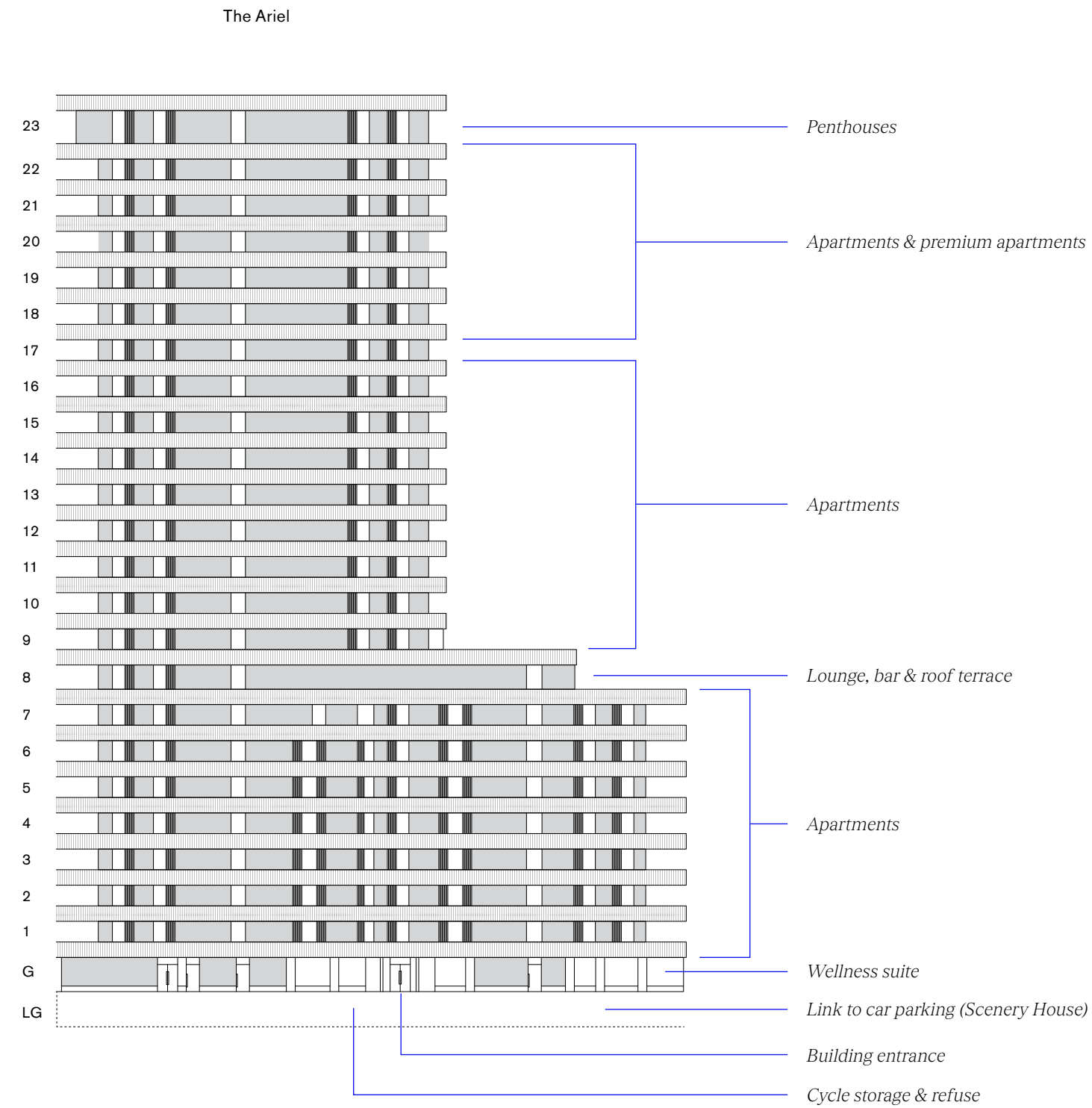


Entrance

A collection of 167 standout apartments arranged over 23 storeys, The Ariel is the only tower within the historic development and will offer uninterrupted views of West London, the City and beyond.



## Building plan



## Amenities



*The Ariel*

*Amenities*



Residents' lobby & co-working

Private residential amenities are arranged across a number of buildings to encourage connectivity and community.



Residents' lobby & co-working



Wellness lounge, PT & yoga/pilates studios



Roof terrace



Bar & lounge



Private dining & meeting room

*Scenery House*

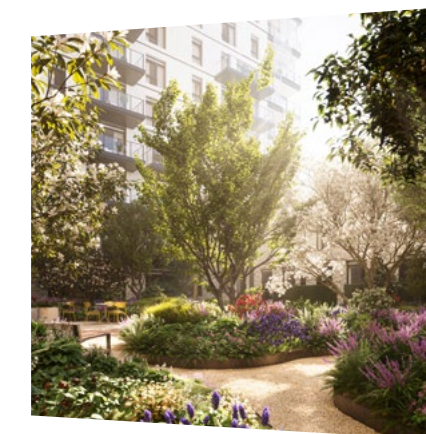
*The Helios*



Residents' lounge



Cinema



Courtyard gardens

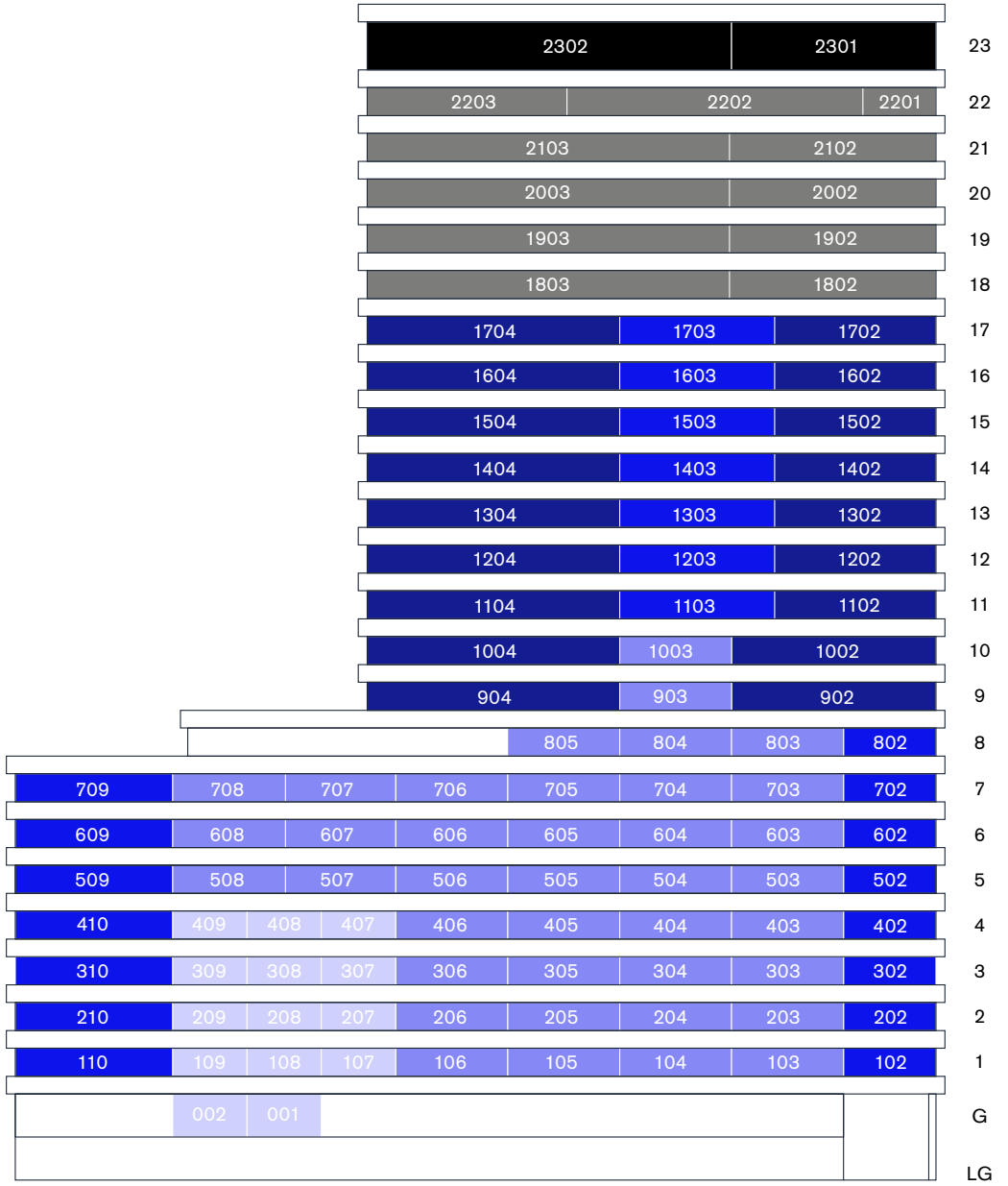


Residents' gym & pool



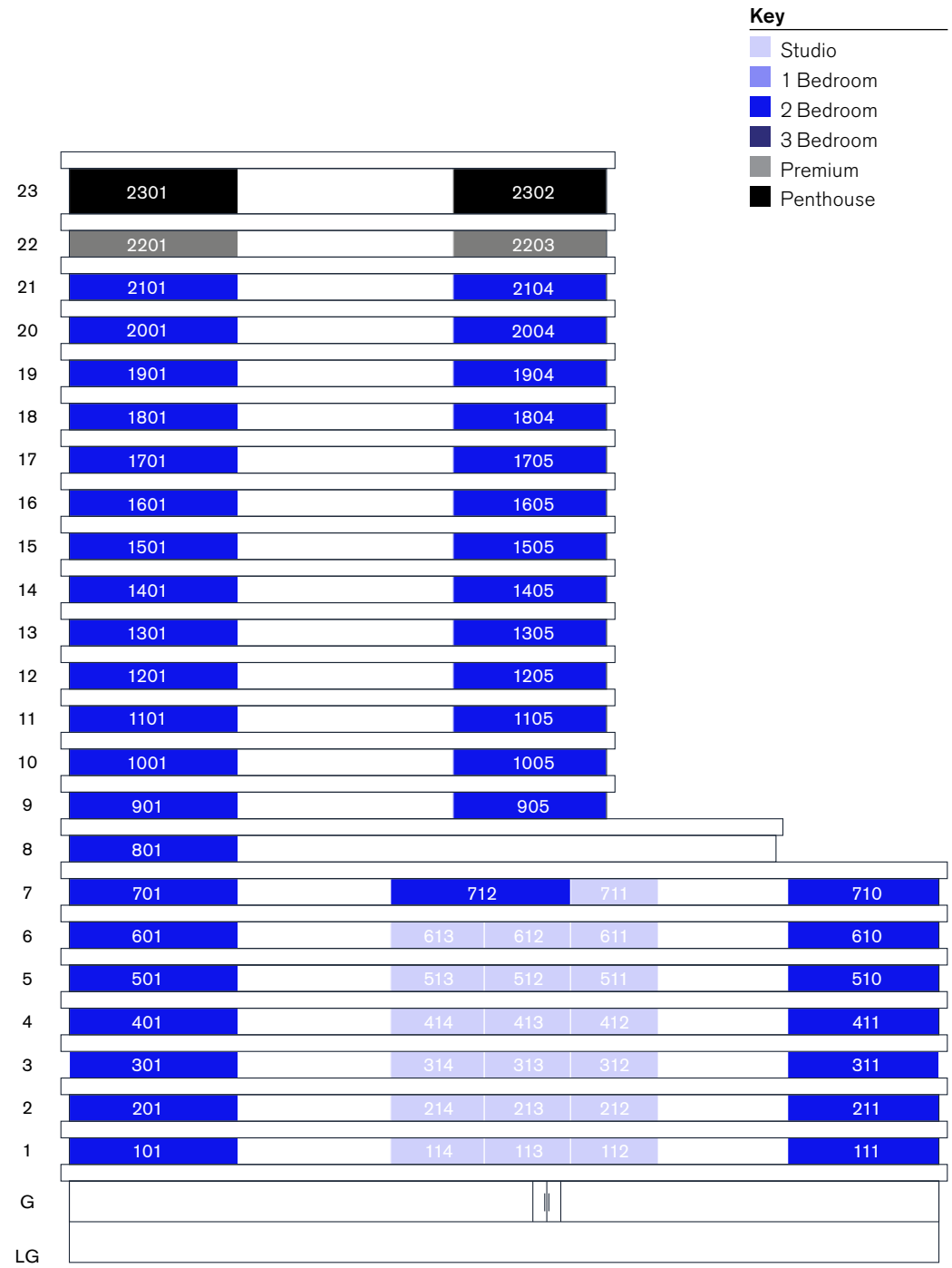


Apartment locator



Wood Lane – East elevation

Floorplans



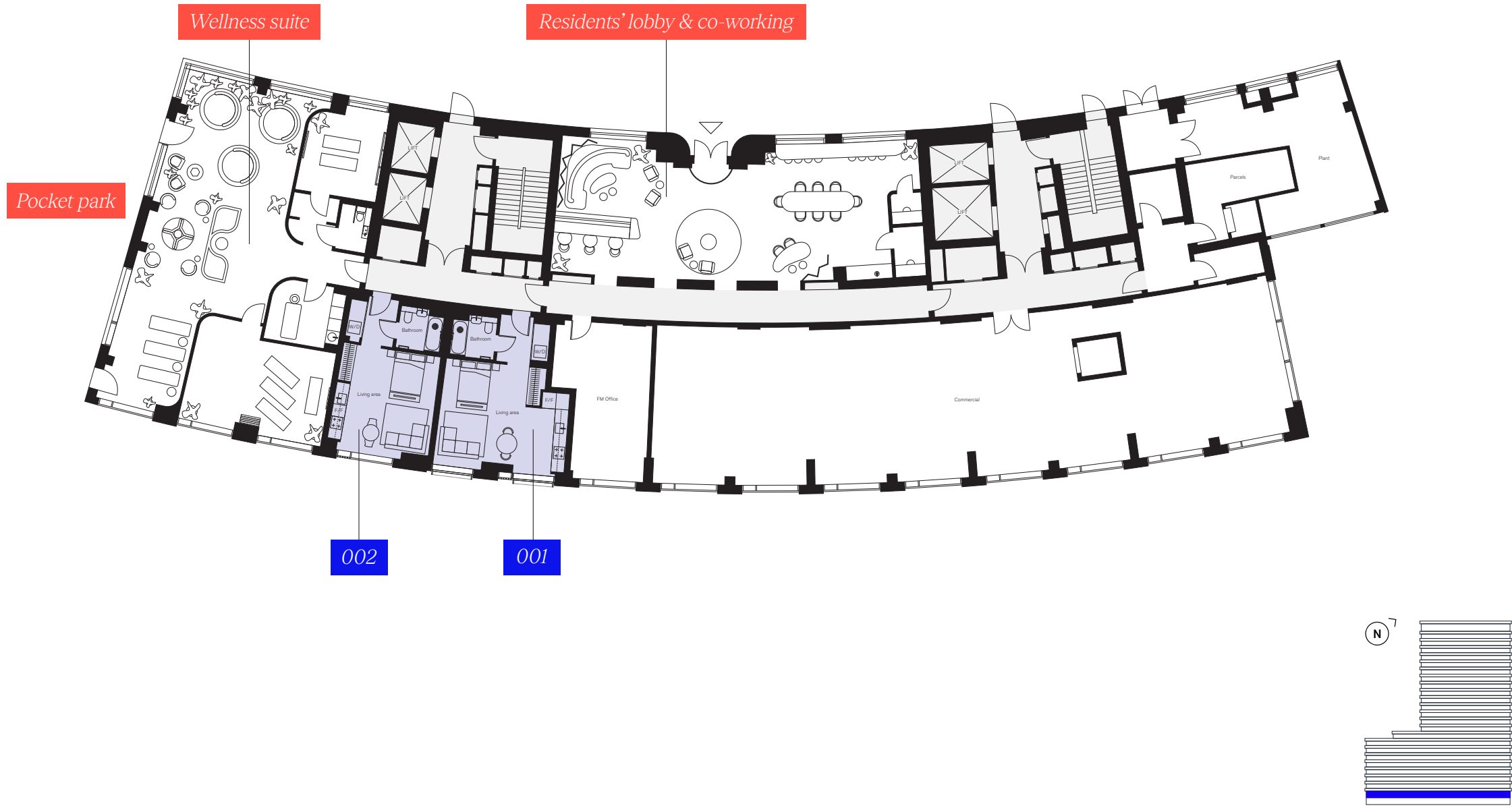
Wood Crescent – West elevation

Key

- Studio
- 1 Bedroom
- 2 Bedroom
- 3 Bedroom
- Premium
- Penthouse



Ground floor



Floor 1





Floor 2



Floor 3





Floor 4

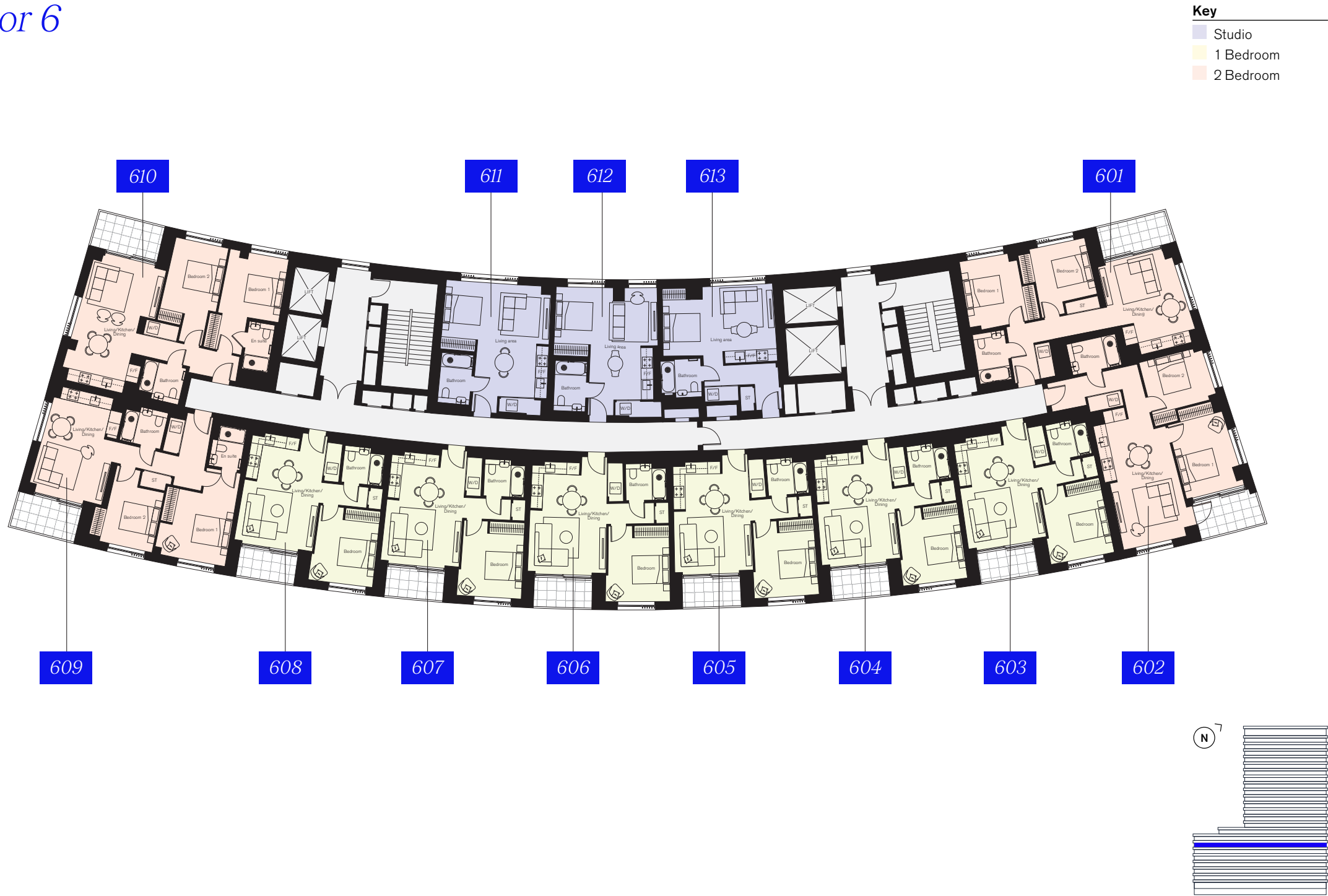


Floor 5





Floor 6



Floor 7

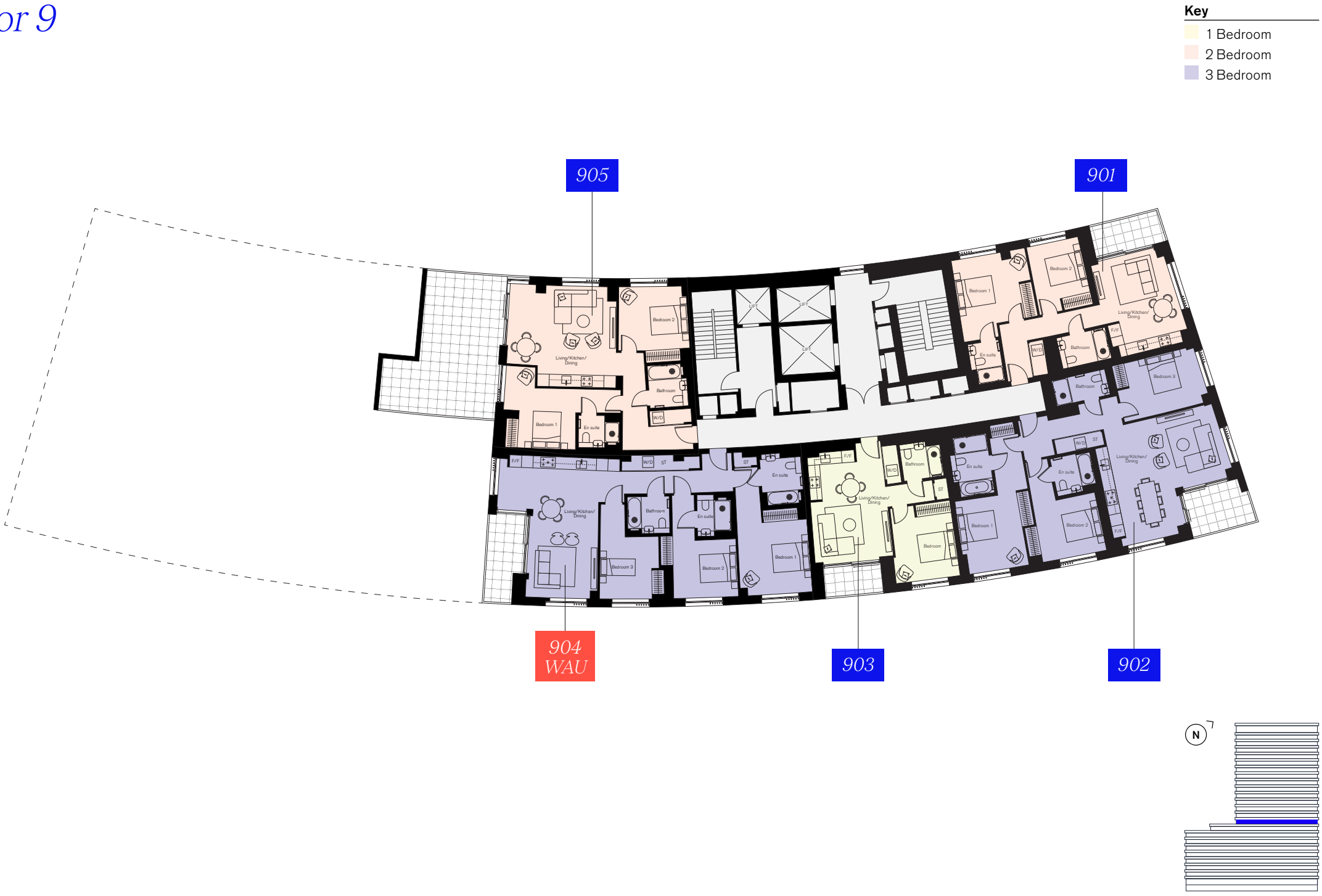




Floor 8



Floor 9





Floor 10



Floor 11

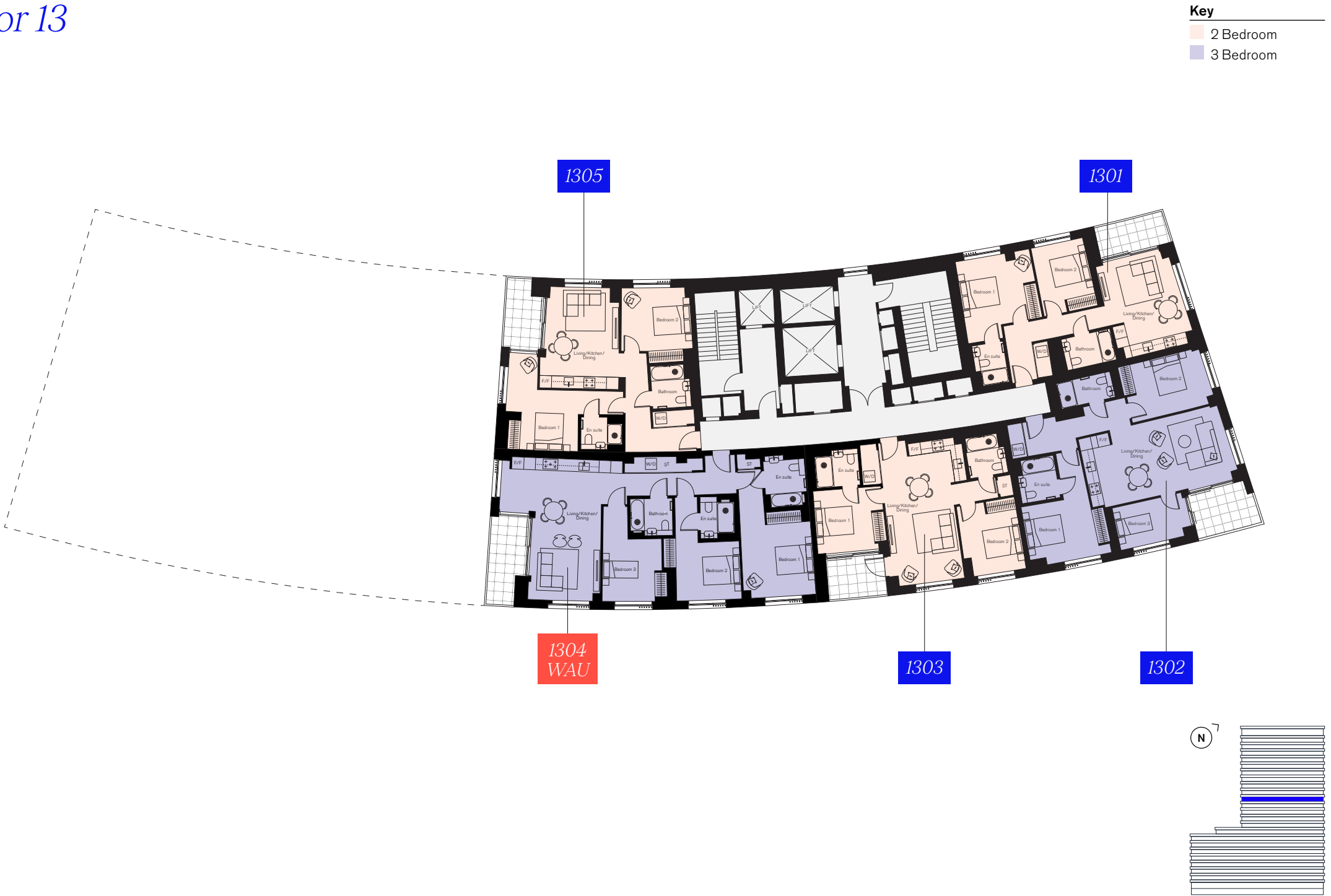




Floor 12



Floor 13





Floor 14



Floor 15





Floor 16



Floor 17

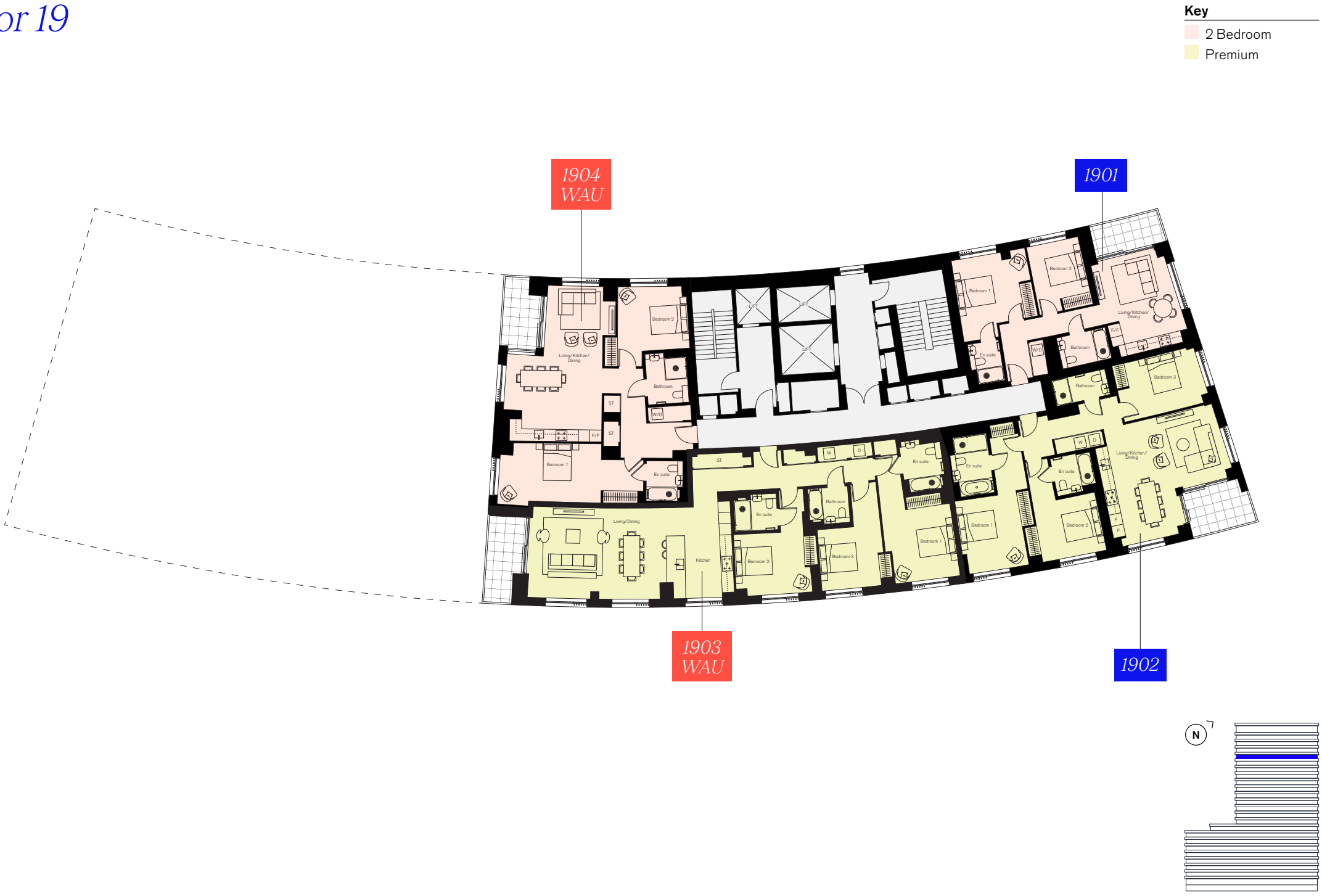




Floor 18



Floor 19



Floor 20



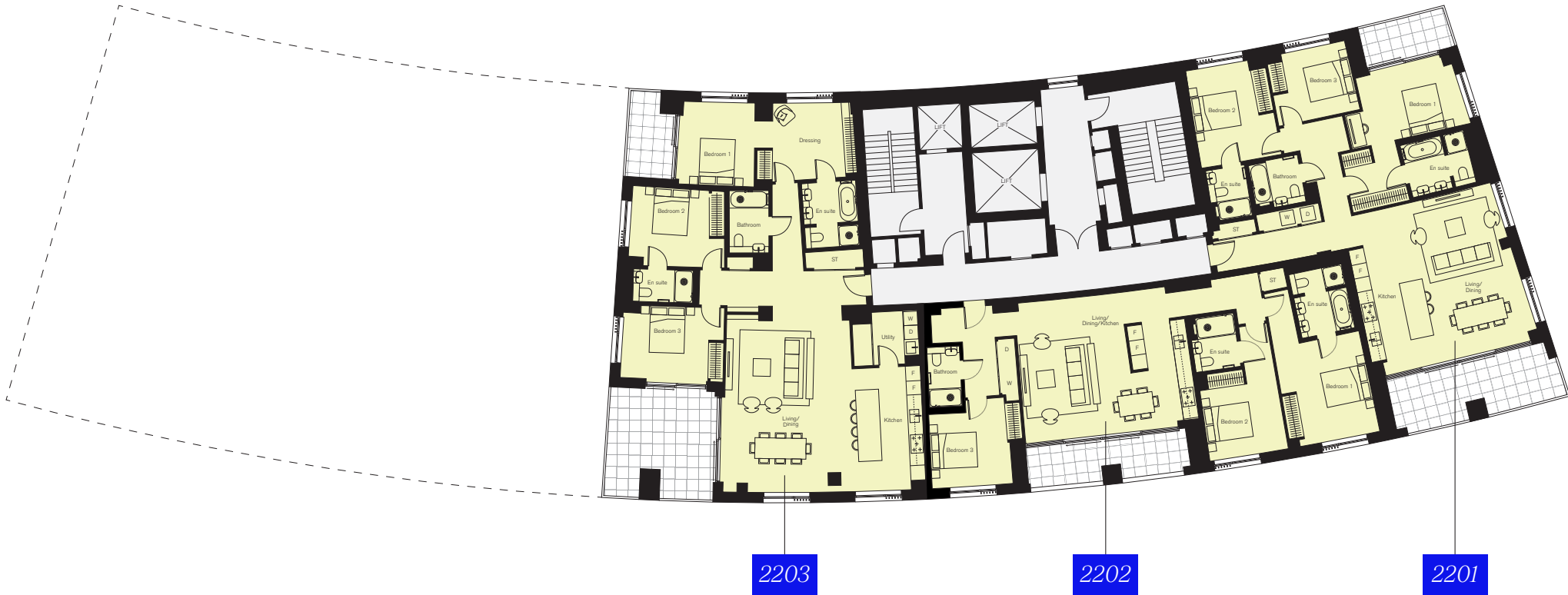
Floor 21





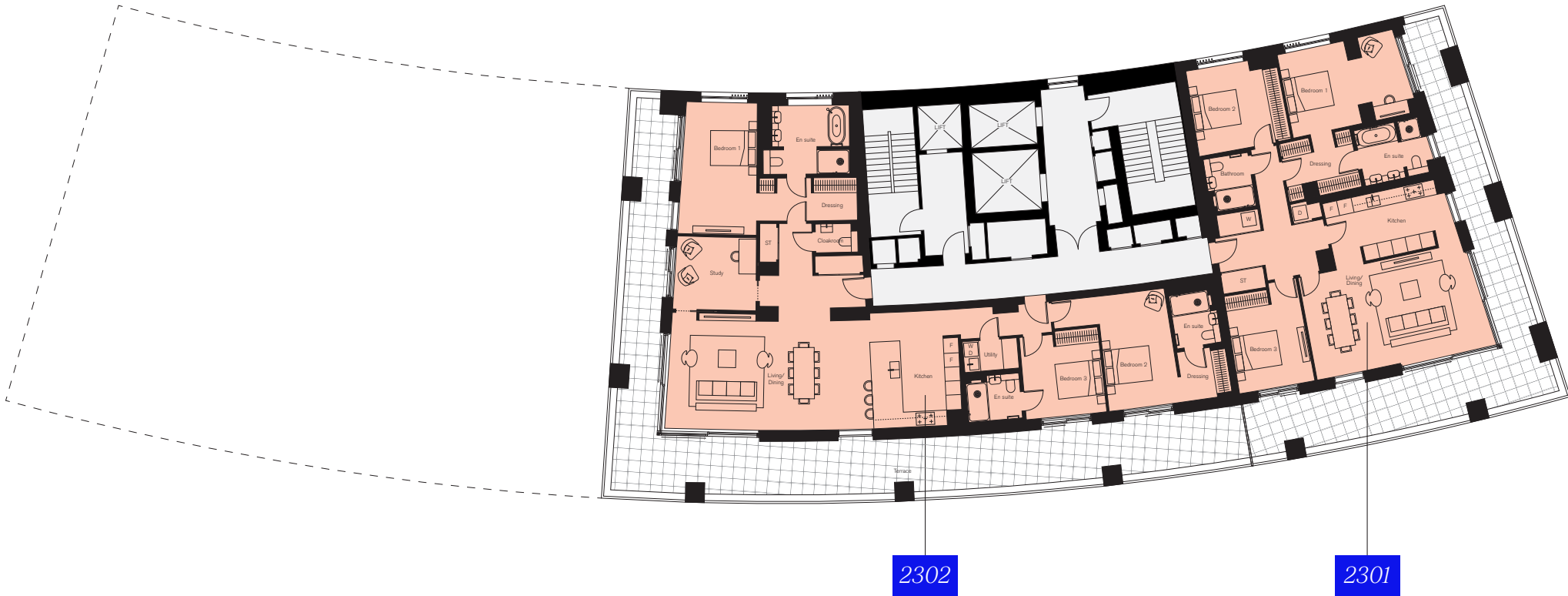
Floor 22

Key  
Premium



Floor 23

Key  
Penthouse



# *Apartments*

# *Studio*

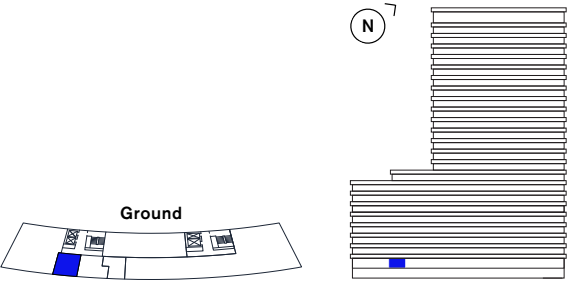
Apartments



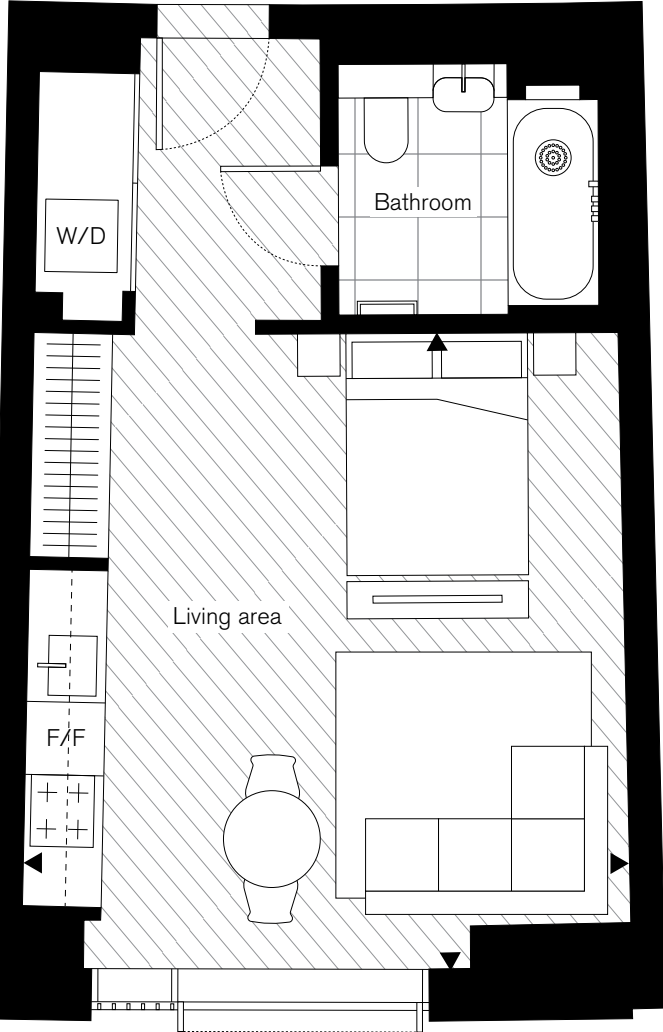
Studio

Type 1a

Floor			
G			
Apartment			
002			
Net Sales Area (NSA)		37.6 sq m	405 sq ft
Living area		5.26m x 4.98m	17'3" x 16'4"



**Disclaimer:** All plans and images contained in this brochure are indicative only and must not be relied upon as being a true or accurate depiction of the relevant scene or area. Specifications, including measurements, dimensions, sizes and distances are approximate only and subject to change at any time without notice. Please note that the units come in different sizes and configurations depending on location within the building.

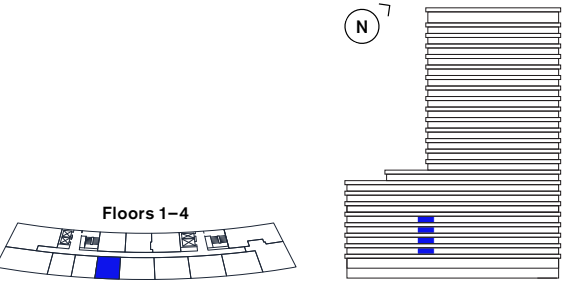


**Key**  
ST – Storage  
W/D – Washer/Dryer  
F/F – Fridge freezer

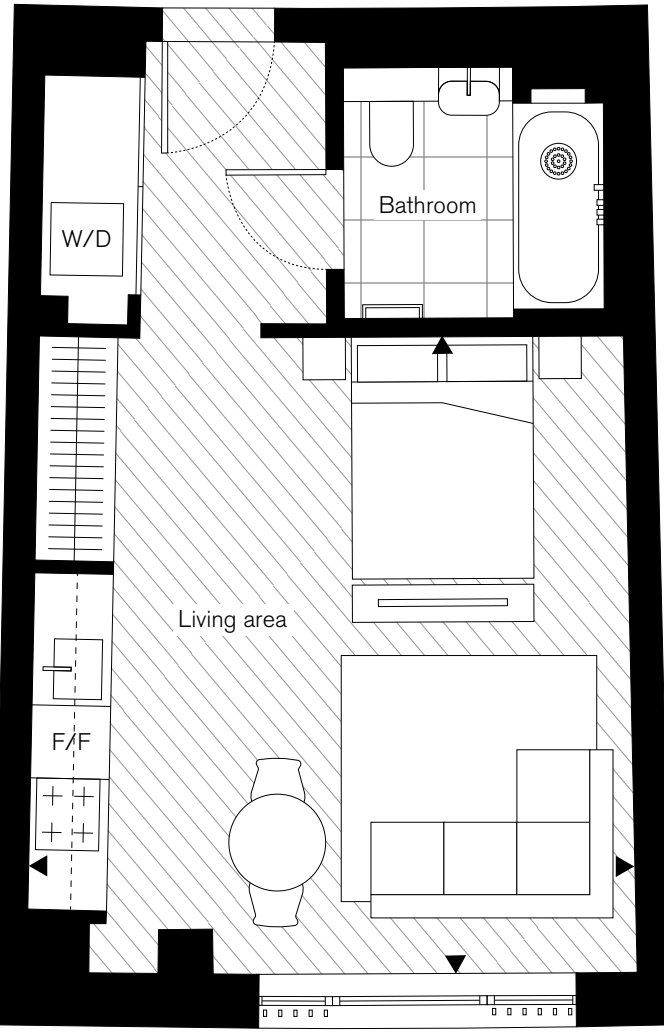
Studio

Type 1b

Floors			
1, 2, 3, 4			
Apartments			
107, 207, 307, 407			
Net Sales Area (NSA)		37.7 sq m	406 sq ft
Living area		5.27m x 5.00m	17'3" x 16'5"



**Disclaimer:** All plans and images contained in this brochure are indicative only and must not be relied upon as being a true or accurate depiction of the relevant scene or area. Specifications, including measurements, dimensions, sizes and distances are approximate only and subject to change at any time without notice. Please note that the units come in different sizes and configurations depending on location within the building.

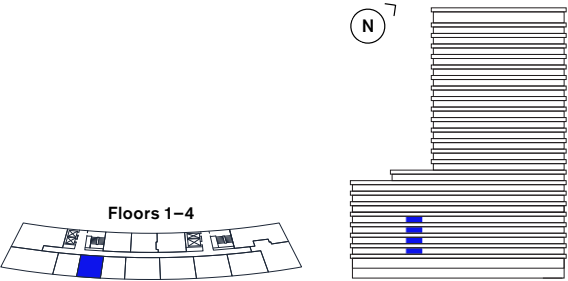


**Key**  
ST – Storage  
W/D – Washer/Dryer  
F/F – Fridge freezer

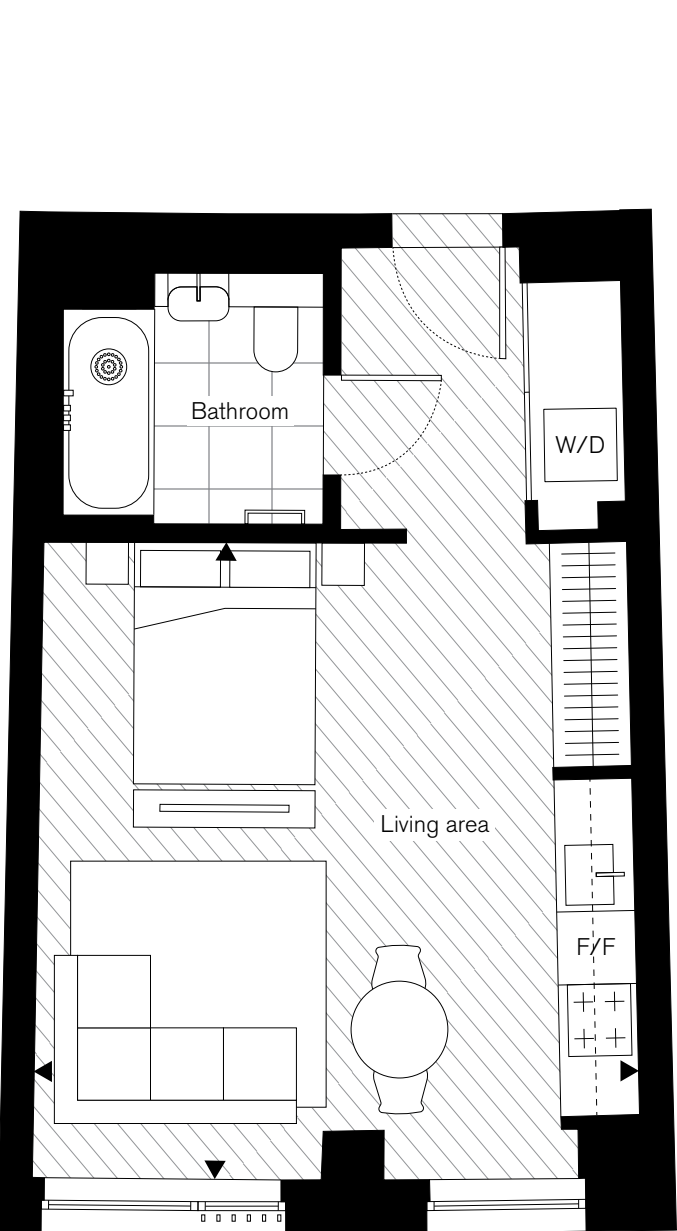
Studio

Type 1c

Floors		
1, 2, 3, 4		
Apartments		
108, 208, 308, 408		
Net Sales Area (NSA)	37.6 sq m	405 sq ft
Living area	5.27m x 5.01m	17'3" x 16'5"



**Disclaimer:** All plans and images contained in this brochure are indicative only and must not be relied upon as being a true or accurate depiction of the relevant scene or area. Specifications, including measurements, dimensions, sizes and distances are approximate only and subject to change at any time without notice. Please note that the units come in different sizes and configurations depending on location within the building.

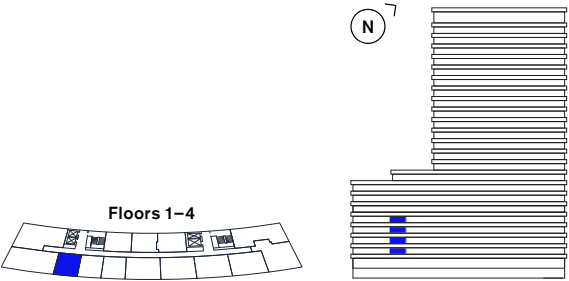


**Key**  
ST – Storage  
W/D – Washer/Dryer  
F/F – Fridge freezer

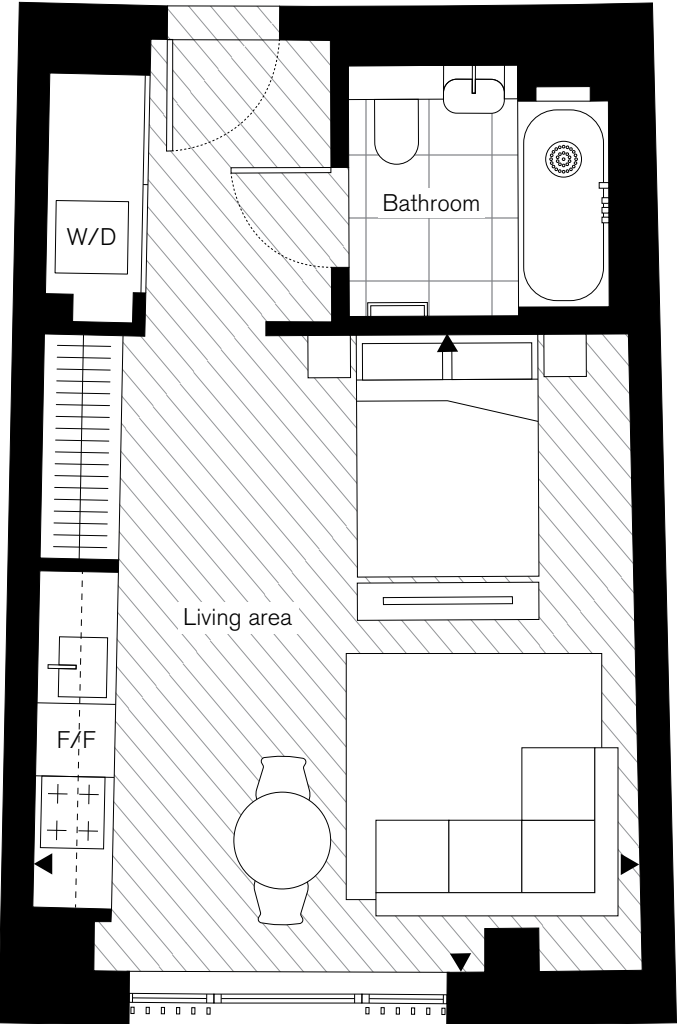
Studio

Type 1d

Floors		
1, 2, 3, 4		
Apartments		
109, 209, 309, 409		
Net Sales Area (NSA)	37.7 sq m	406 sq ft
Living area	5.27m x 5.01m	17'3" x 16'5"



**Disclaimer:** All plans and images contained in this brochure are indicative only and must not be relied upon as being a true or accurate depiction of the relevant scene or area. Specifications, including measurements, dimensions, sizes and distances are approximate only and subject to change at any time without notice. Please note that the units come in different sizes and configurations depending on location within the building.

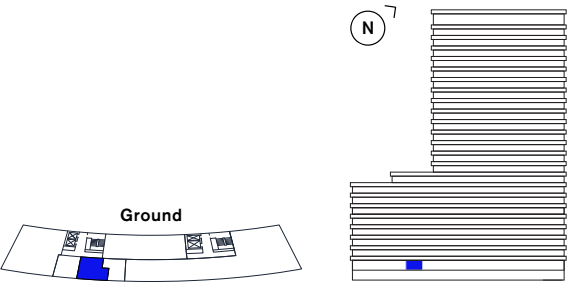


**Key**  
ST – Storage  
W/D – Washer/Dryer  
F/F – Fridge freezer

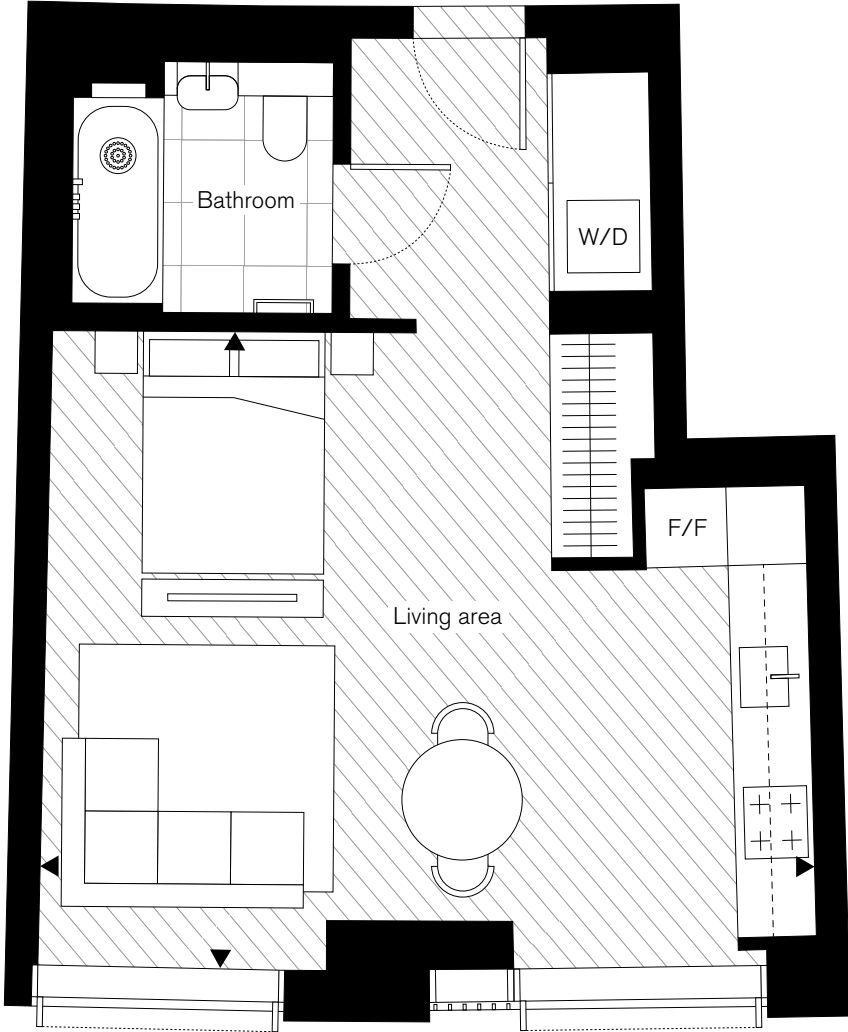


Studio  
Type 2

Floor			
G			
Apartment			
001			
Net Sales Area (NSA)		43.8 sq m	471 sq ft
Living area		5.25m x 6.40m	17'3" x 20'12"



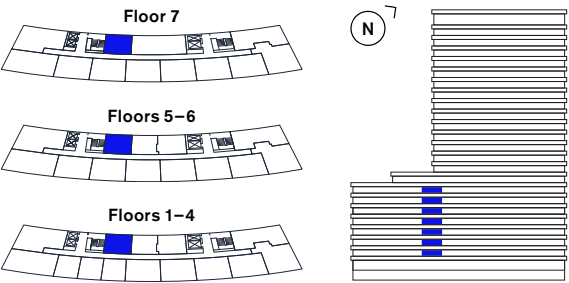
**Disclaimer:** All plans and images contained in this brochure are indicative only and must not be relied upon as being a true or accurate depiction of the relevant scene or area. Specifications, including measurements, dimensions, sizes and distances are approximate only and subject to change at any time without notice. Please note that the units come in different sizes and configurations depending on location within the building.



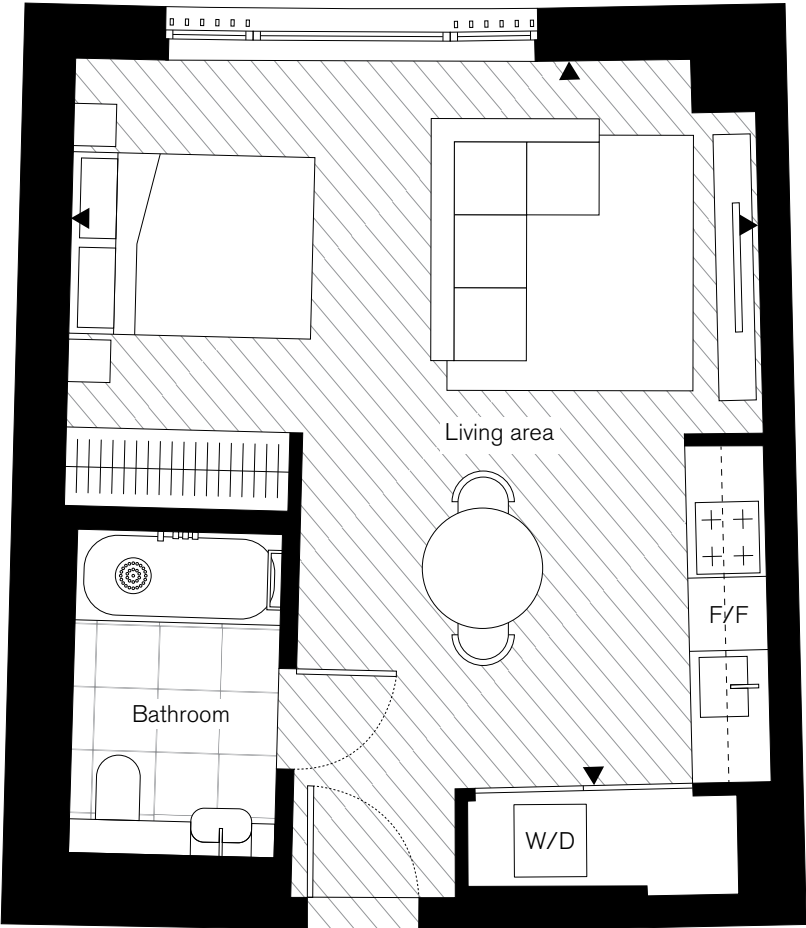
**Key**  
ST – Storage  
W/D – Washer/Dryer  
F/F – Fridge freezer

Studio  
Type 3

Floors			
1, 2, 3, 4, 5, 6, 7			
Apartments			
112, 212, 312, 412, 511, 611, 711			
Net Sales Area (NSA)		39.9 sq m	429 sq ft
Living area		5.99m x 5.68m	19'8" x 18'8"



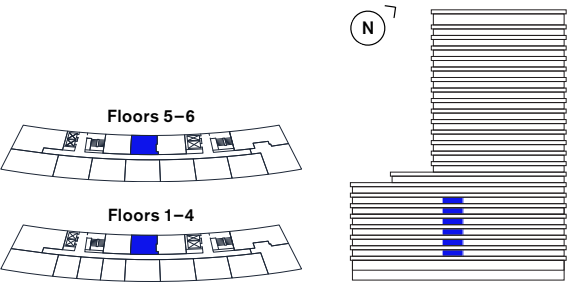
**Disclaimer:** All plans and images contained in this brochure are indicative only and must not be relied upon as being a true or accurate depiction of the relevant scene or area. Specifications, including measurements, dimensions, sizes and distances are approximate only and subject to change at any time without notice. Please note that the units come in different sizes and configurations depending on location within the building.



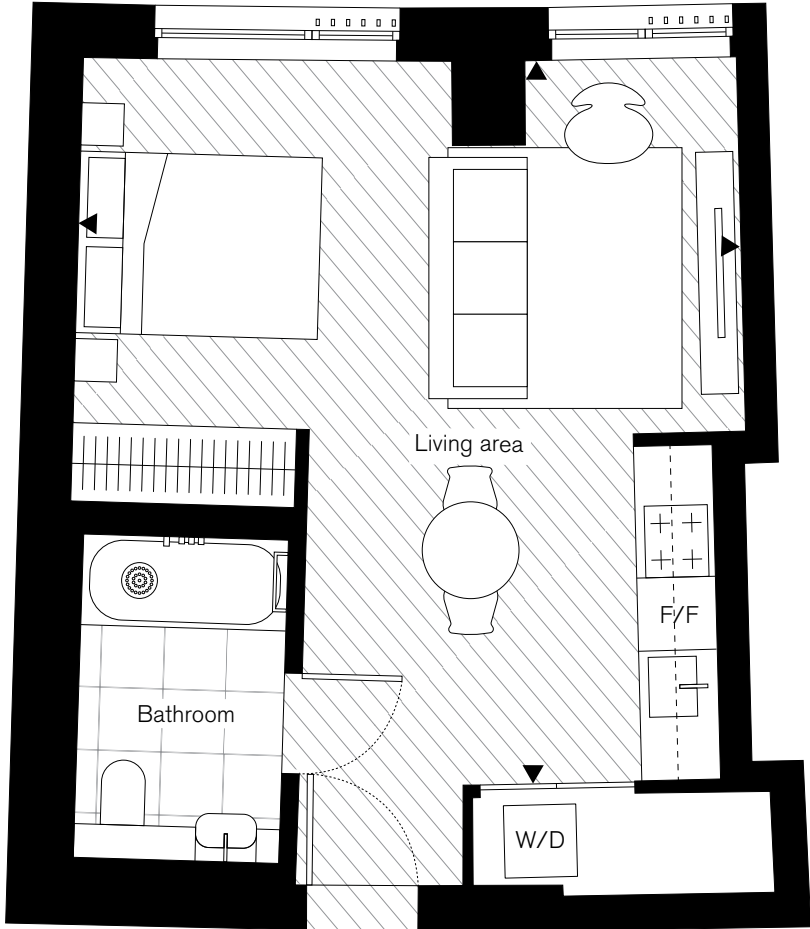
**Key**  
ST – Storage  
W/D – Washer/Dryer  
F/F – Fridge freezer

Studio  
Type 4

Floors		
1, 2, 3, 4, 5, 6		
Apartments		
113, 213, 313, 413, 512, 612		
Net Sales Area (NSA)	37.9 sq m	408 sq ft
Living area	6.01m x 5.48m	19'9" x 17'12"



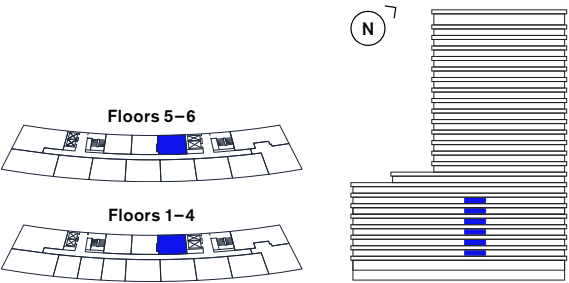
**Disclaimer:** All plans and images contained in this brochure are indicative only and must not be relied upon as being a true or accurate depiction of the relevant scene or area. Specifications, including measurements, dimensions, sizes and distances are approximate only and subject to change at any time without notice. Please note that the units come in different sizes and configurations depending on location within the building.



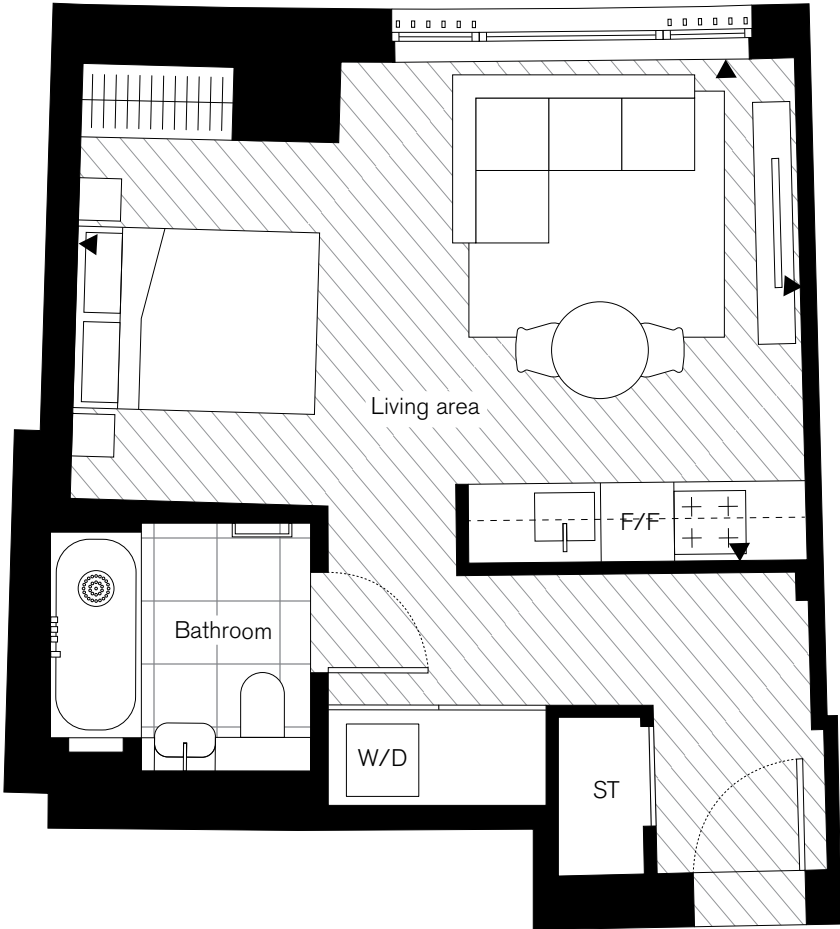
**Key**  
ST – Storage  
W/D – Washer/Dryer  
F/F – Fridge freezer

Studio  
Type 5

Floors		
1, 2, 3, 4, 5, 6		
Apartments		
114, 214, 314, 414, 513, 613		
Net Sales Area (NSA)	39.5 sq m	425 sq ft
Living area	6.00m x 4.15m	19'8" x 13'7"



**Disclaimer:** All plans and images contained in this brochure are indicative only and must not be relied upon as being a true or accurate depiction of the relevant scene or area. Specifications, including measurements, dimensions, sizes and distances are approximate only and subject to change at any time without notice. Please note that the units come in different sizes and configurations depending on location within the building.



**Key**  
ST – Storage  
W/D – Washer/Dryer  
F/F – Fridge freezer



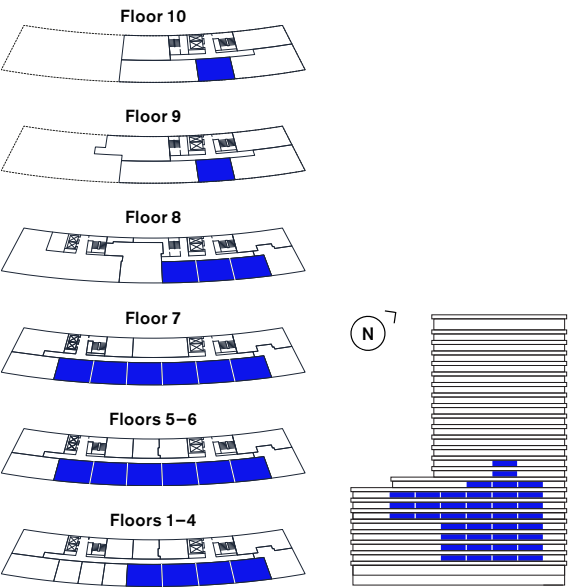
# 1 Bedroom

## Apartments

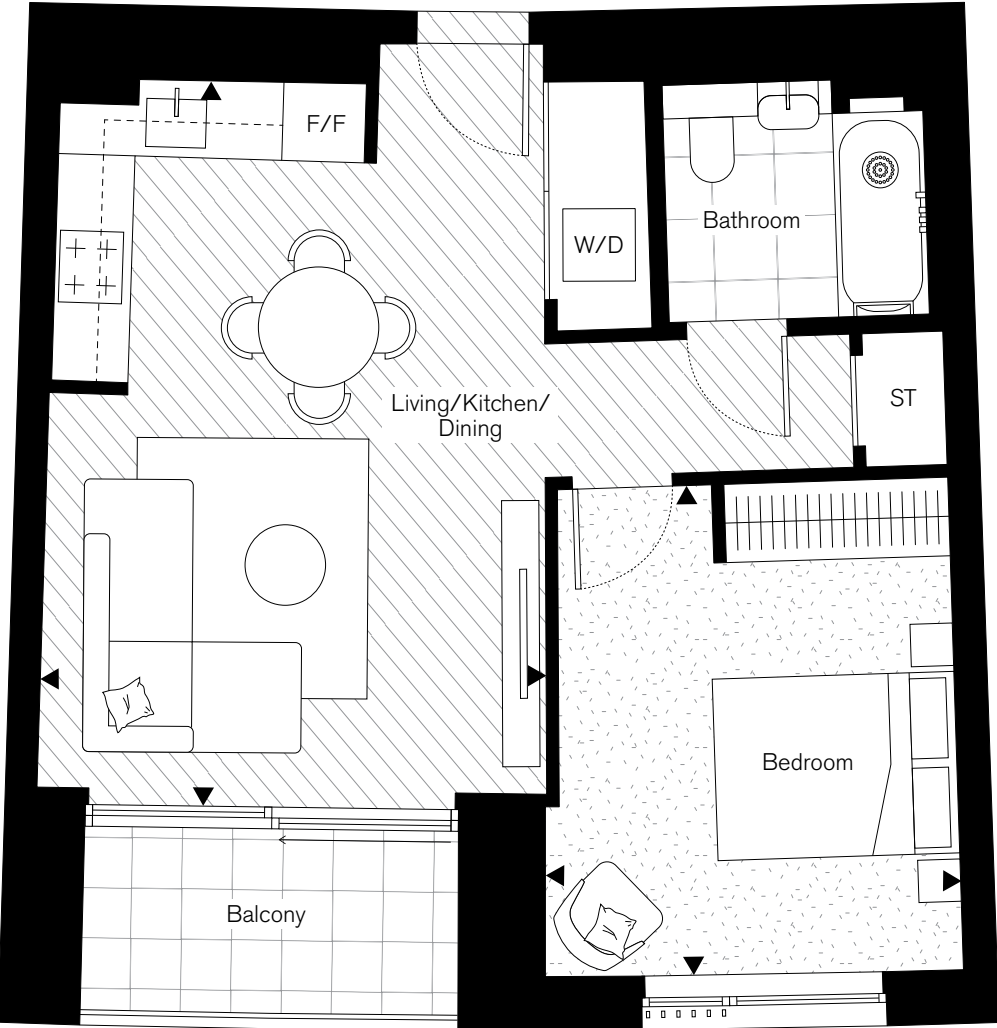
### 1 Bedroom

#### Type 1

Floors			
1, 2, 3, 4, 5, 6, 7, 8, 9, 10			
Apartments			
103, 104, 105, 106, 203, 204, 205, 206, 303, 304, 305, 306, 403, 404, 405, 406, 503, 504, 505, 506, 507, 508, 603, 604, 605, 606, 607, 608, 703, 704, 705, 706, 707, 708, 803, 804, 805, 903, 1003			
Net Sales Area (NSA)	51.5 sq m	554 sq ft	
Living/Kitchen/Dining	6.01m x 4.17m	19'9" x 13'8"	
Bedroom	4.05m x 3.43m	13'3" x 11'3"	
Balcony	4.8 sq m	52 sq ft	



**Disclaimer:** All plans and images contained in this brochure are indicative only and must not be relied upon as being a true or accurate depiction of the relevant scene or area. Specifications, including measurements, dimensions, sizes and distances are approximate only and subject to change at any time without notice. Please note that the units come in different sizes and configurations depending on location within the building.



**Key**  
ST – Storage  
W/D – Washer/Dryer  
F/F – Fridge freezer

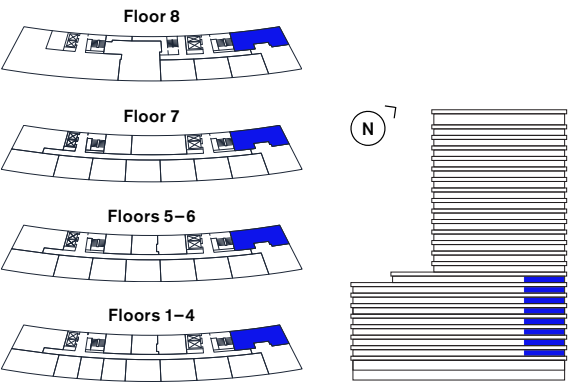
# 2 Bedroom

## Apartments

### 2 Bedroom

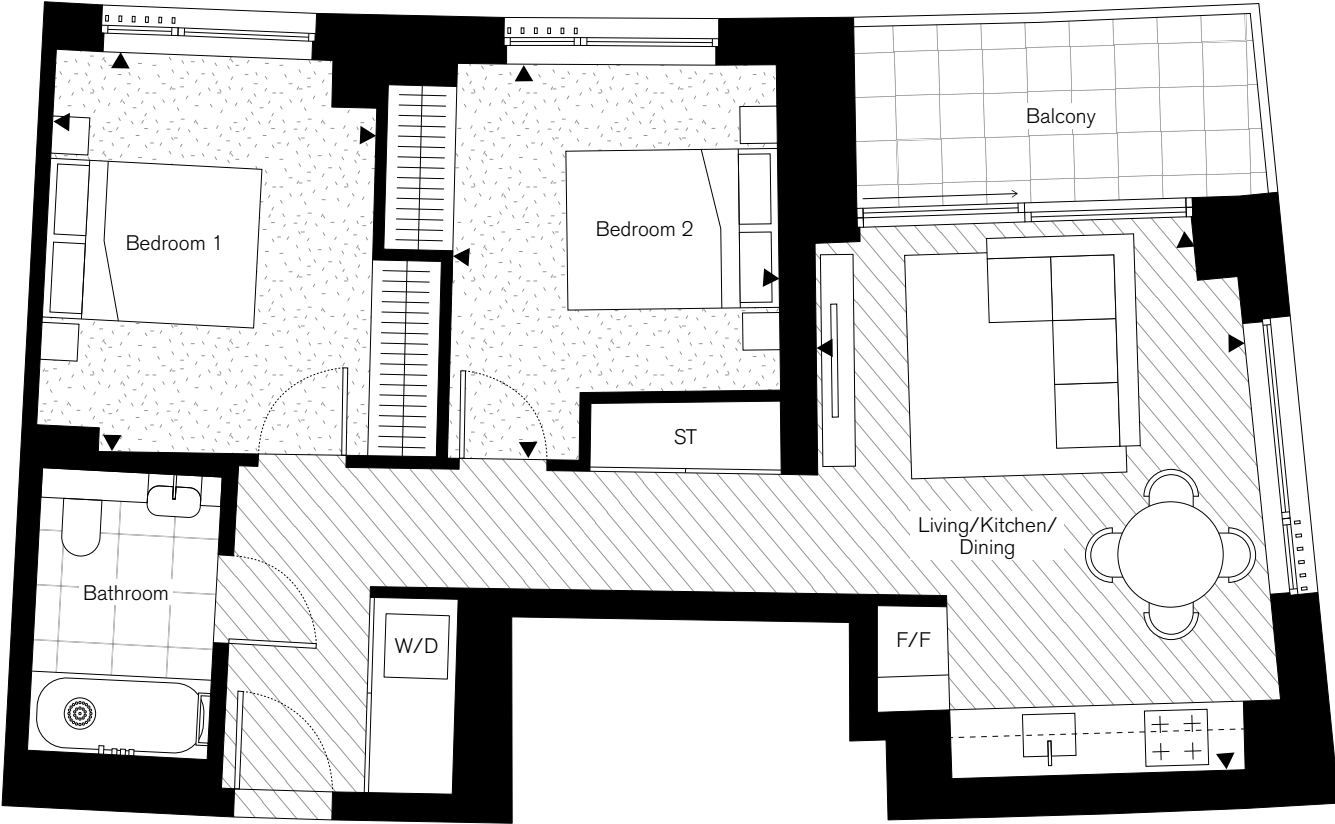
#### Type 1

Floors			
1, 2, 3, 4, 5, 6, 7, 8			
Apartments			
101, 201, 301, 401, 501, 601, 701, 801			
Net Sales Area (NSA)	65.1 sq m	701 sq ft	
Living/Kitchen/Dining	5.11m x 4.06m	16'9" x 13'4"	
Bedroom 1	3.72m x 3.09m	12'2" x 10'2"	
Bedroom 2	3.77m x 3.06m	12'4" x 10'0"	
Balcony	6.6 sq m	71 sq ft	



**Disclaimer:** All plans and images contained in this brochure are indicative only and must not be relied upon as being a true or accurate depiction of the relevant scene or area. Specifications, including measurements, dimensions, sizes and distances are approximate only and subject to change at any time without notice. Please note that the units come in different sizes and configurations depending on location within the building.

**Key**  
ST – Storage  
W/D – Washer/Dryer  
F/F – Fridge freezer

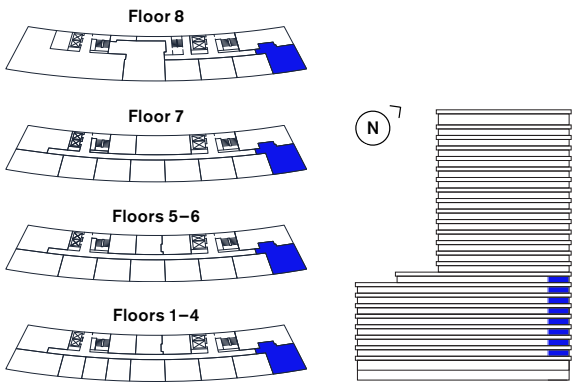




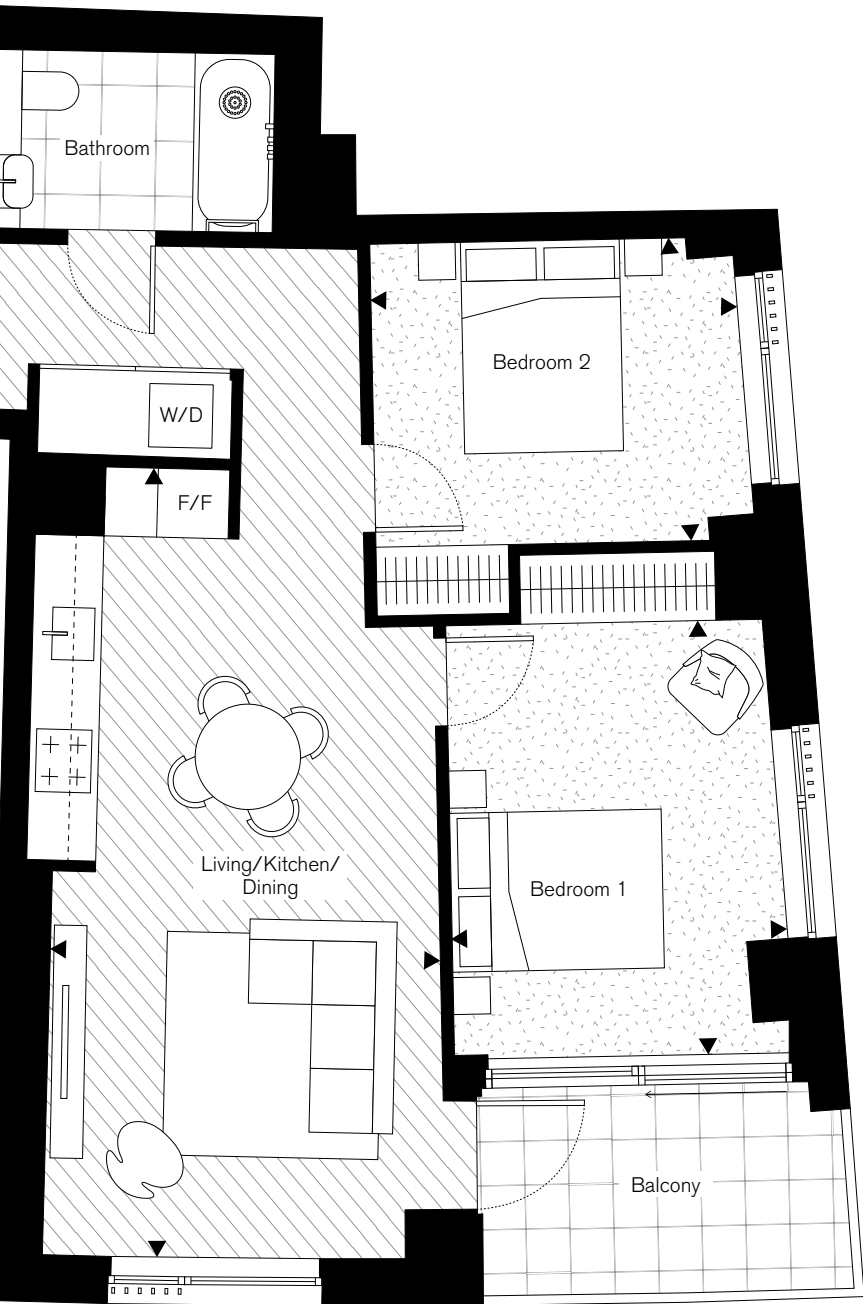
# 2 Bedroom

## Type 2

Floors			
1, 2, 3, 4, 5, 6, 7, 8			
Apartments			
102, 202, 302, 402, 502, 602, 702, 802			
Net Sales Area (NSA)	70.5 sq m	759 sq ft	
Living/Kitchen/Dining	7.45m x 3.68m	24'5" x 12'1"	
Bedroom 1	4.06m x 3.17m	13'4" x 10'5"	
Bedroom 2	3.45m x 2.86m	11'4" x 9'5"	
Balcony	6.7 sq m	72 sq ft	



**Disclaimer:** All plans and images contained in this brochure are indicative only and must not be relied upon as being a true or accurate depiction of the relevant scene or area. Specifications, including measurements, dimensions, sizes and distances are approximate only and subject to change at any time without notice. Please note that the units come in different sizes and configurations depending on location within the building.

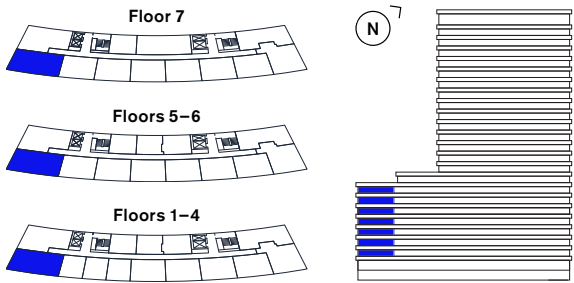


**Key**  
ST – Storage  
W/D – Washer/Dryer  
F/F – Fridge freezer

# 2 Bedroom

## Type 3

Floors			
1, 2, 3, 4, 5, 6, 7			
Apartments			
110, 210, 310, 410, 509, 609, 709			
Net Sales Area (NSA)	76.2 sq m	820 sq ft	
Living/Kitchen/Dining	5.82m x 3.98m	19'1" x 13'1"	
Bedroom 1	5.04m x 3.83m	16'6" x 12'7"	
Bedroom 2	4.16m x 2.87m	13'8" x 9'5"	
Balcony	6.6 sq m	71 sq ft	



**Disclaimer:** All plans and images contained in this brochure are indicative only and must not be relied upon as being a true or accurate depiction of the relevant scene or area. Specifications, including measurements, dimensions, sizes and distances are approximate only and subject to change at any time without notice. Please note that the units come in different sizes and configurations depending on location within the building.



**Key**  
ST – Storage  
W/D – Washer/Dryer  
F/F – Fridge freezer

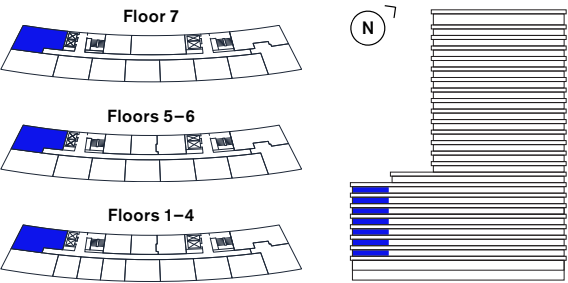
# 2 Bedroom

## Type 4

Floors			
1, 2, 3, 4, 5, 6, 7			
Apartments			
111, 211, 311, 411, 510, 610, 710			
Net Sales Area (NSA)	77.3 sq m	832 sq ft	
Living/Kitchen/Dining	7.10m x 3.97m	23'4" x 13'0"	
Bedroom 1	5.42m x 3.20m	17'9" x 10'6"	
Bedroom 2	5.40m x 2.89m	17'9" x 9'6"	
Balcony	6.9 sq m	74 sq ft	



Key  
ST – Storage  
W/D – Washer/Dryer  
F/F – Fridge freezer

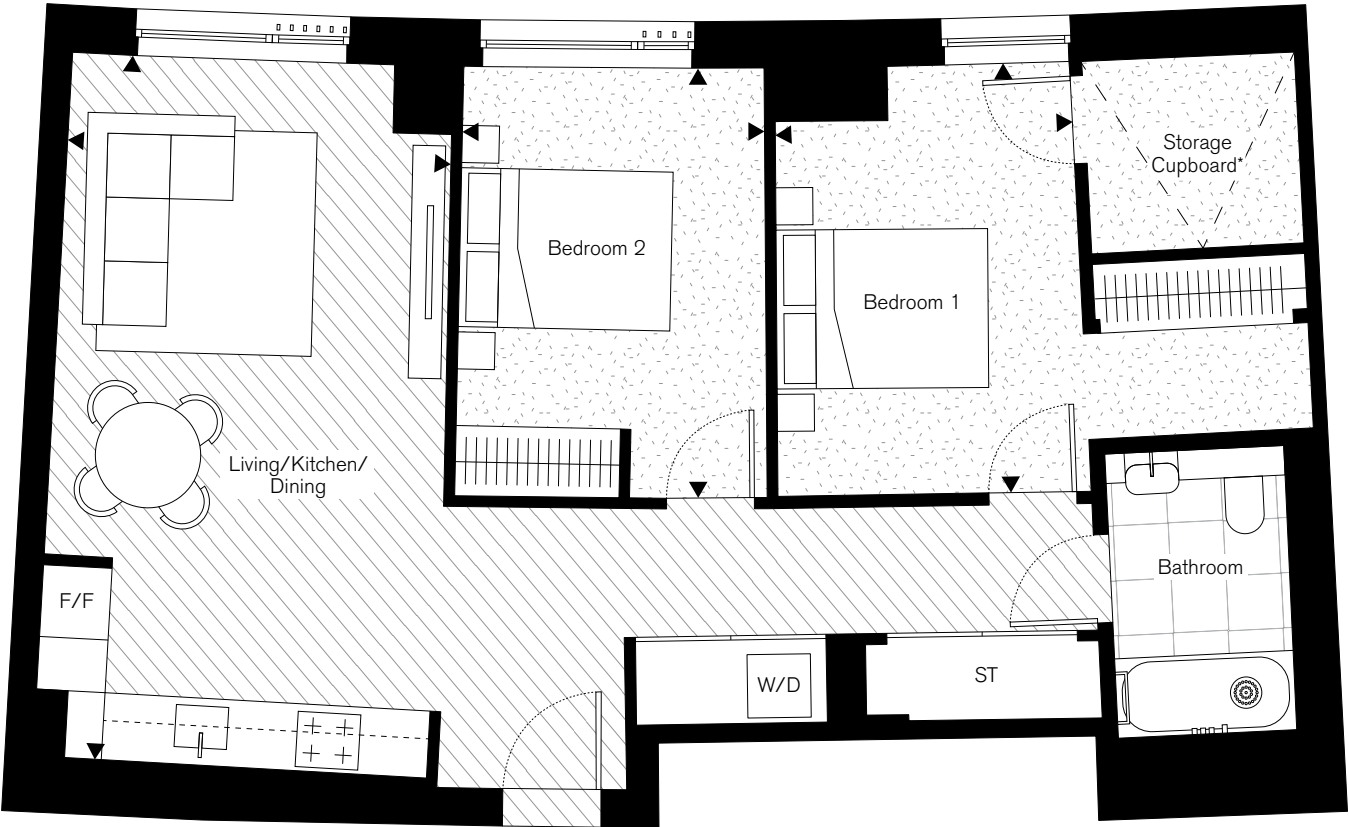


**Disclaimer:** All plans and images contained in this brochure are indicative only and must not be relied upon as being a true or accurate depiction of the relevant scene or area. Specifications, including measurements, dimensions, sizes and distances are approximate only and subject to change at any time without notice. Please note that the units come in different sizes and configurations depending on location within the building.

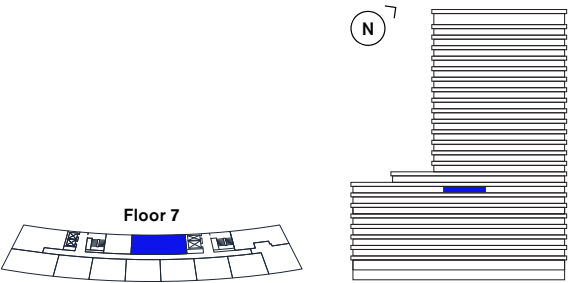
# 2 Bedroom

## Type 5

Floors			
7			
Apartment			
712			
Net Sales Area (NSA)	78.8 sq m	848 sq ft	
Living/Kitchen/Dining	6.68m x 3.62m	21'11" x 11'11"	
Bedroom 1	4.05m x 2.80m	13'3" x 9'2"	
Bedroom 2	4.06m x 2.85m	13'4" x 9'4"	



Key  
ST – Storage  
W/D – Washer/Dryer  
F/F – Fridge freezer



**Disclaimer:** All plans and images contained in this brochure are indicative only and must not be relied upon as being a true or accurate depiction of the relevant scene or area. Specifications, including measurements, dimensions, sizes and distances are approximate only and subject to change at any time without notice. Please note that the units come in different sizes and configurations depending on location within the building.

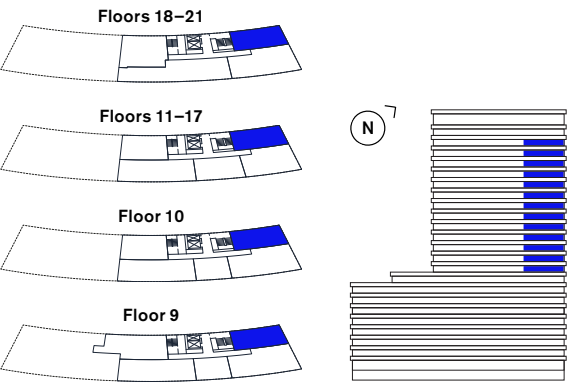
\*Restricted height area (c.1.8m)



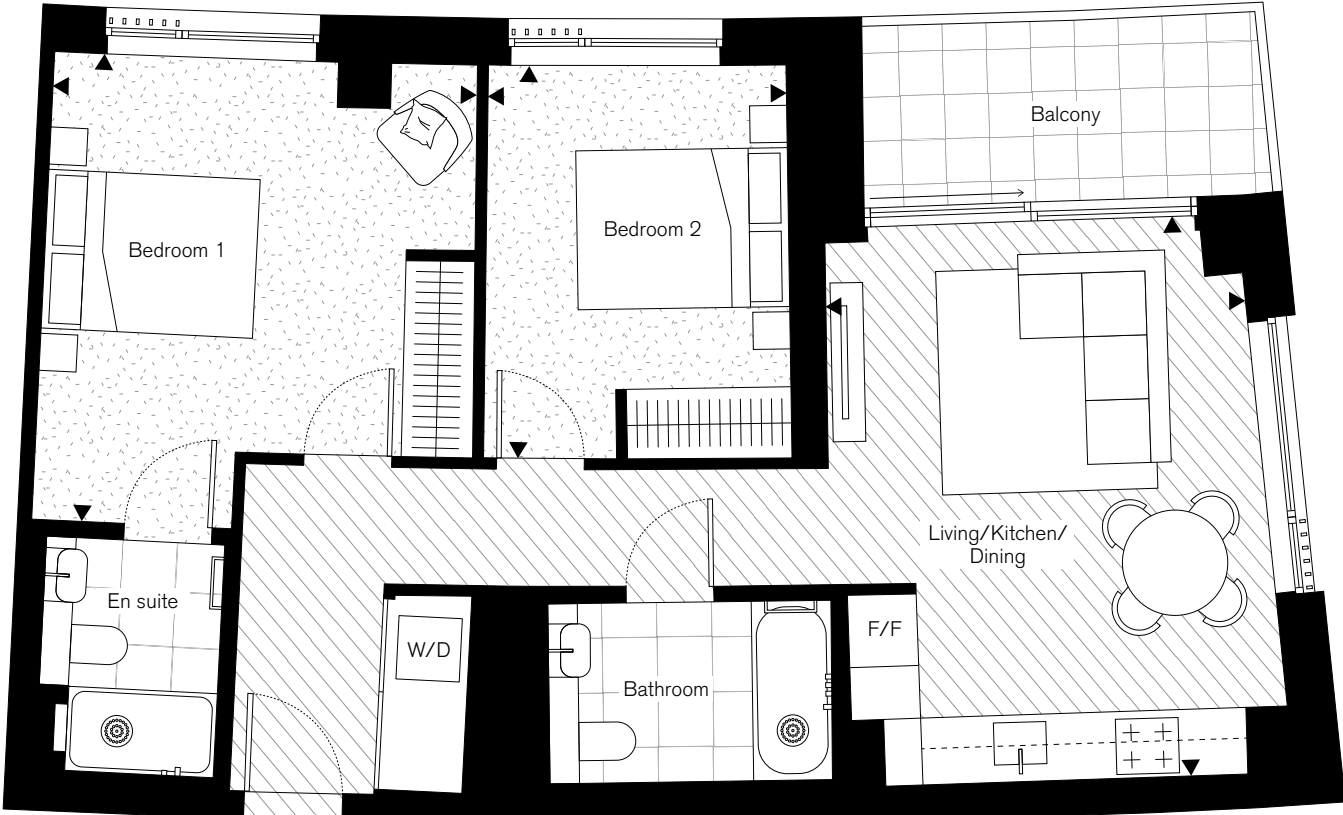
# 2 Bedroom

## Type 6

Floors		
9, 10, 11, 12, 13, 14, 15, 16, 17, 18, 19, 20, 21		
Apartments		
901, 1001, 1101, 1201, 1301, 1401, 1501, 1601, 1701, 1801, 1901, 2001, 2101		
Net Sales Area (NSA)	73.0 sq m	786 sq ft
Living/Kitchen/Dining	5.31m x 3.96m	17'5" x 12'12"
Bedroom 1	4.42m x 4.01m	14'6" x 13'2"
Bedroom 2	3.71m x 2.82m	12'2" x 9'3"
Balcony	6.6 sq m	71 sq ft



**Disclaimer:** All plans and images contained in this brochure are indicative only and must not be relied upon as being a true or accurate depiction of the relevant scene or area. Specifications, including measurements, dimensions, sizes and distances are approximate only and subject to change at any time without notice. Please note that the units come in different sizes and configurations depending on location within the building.

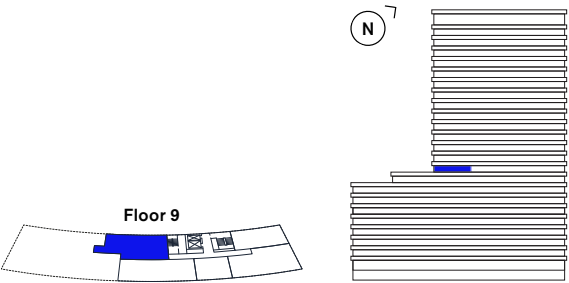


**Key**  
ST – Storage  
W/D – Washer/Dryer  
F/F – Fridge freezer

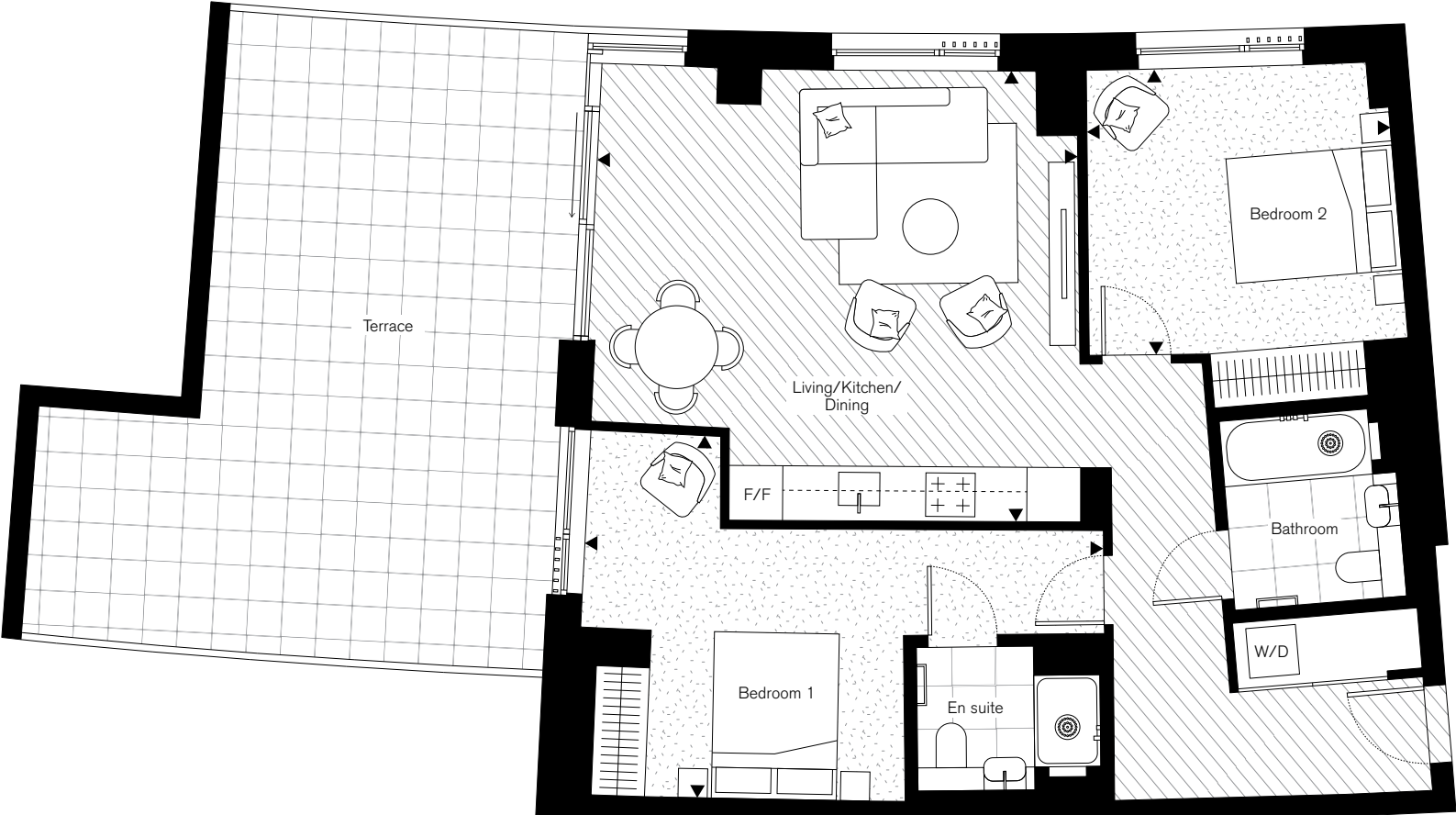
# 2 Bedroom

## Type 7

Floor		
9		
Apartment		
905		
Net Sales Area (NSA)	87.0 sq m	936 sq ft
Living/Kitchen/Dining	5.76m x 5.40m	18'11" x 17'9"
Bedroom 1	6.23m x 4.36m	20'5" x 14'4"
Bedroom 2	3.67m x 3.43m	12'0" x 11'3"
Terrace	38.0 sq m	409 sq ft



**Disclaimer:** All plans and images contained in this brochure are indicative only and must not be relied upon as being a true or accurate depiction of the relevant scene or area. Specifications, including measurements, dimensions, sizes and distances are approximate only and subject to change at any time without notice. Please note that the units come in different sizes and configurations depending on location within the building.

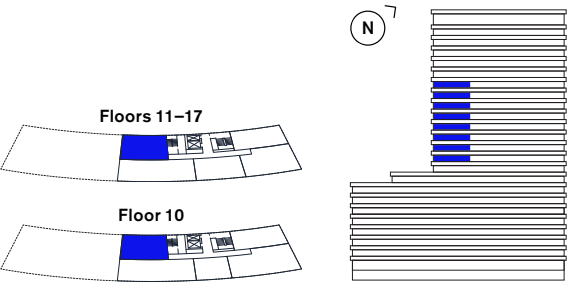


**Key**  
ST – Storage  
W/D – Washer/Dryer  
F/F – Fridge freezer

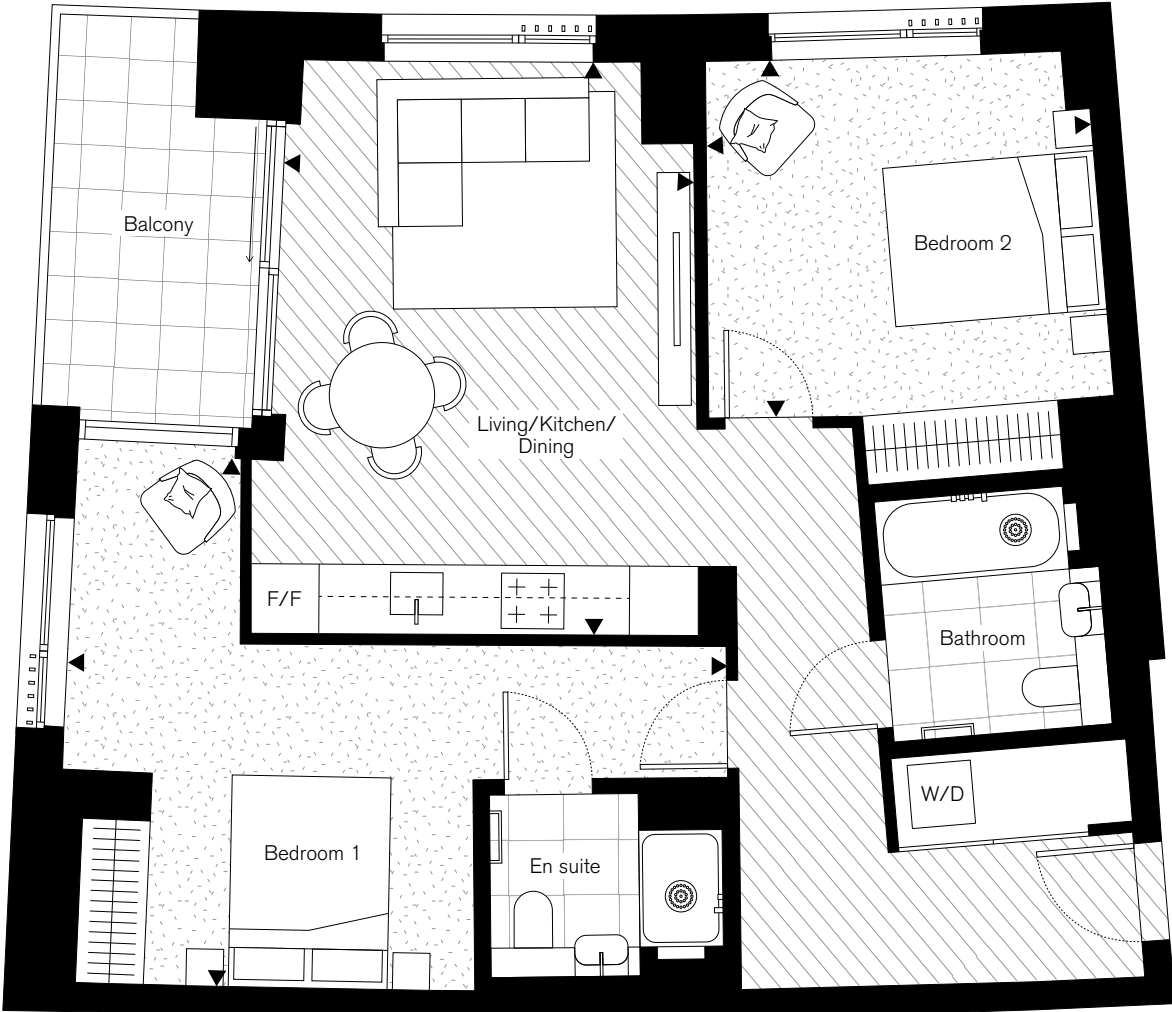
# 2 Bedroom

## Type 8

Floors			
10, 11, 12, 13, 14, 15, 16, 17			
Apartments			
1005, 1105, 1205, 1305, 1405, 1505, 1605, 1705			
Net Sales Area (NSA)	79.7 sq m	858 sq ft	
Living/Kitchen/Dining	5.39m x 3.87m	17'8" x 12'8"	
Bedroom 1	6.23m x 5.00m	20'5" x 16'5"	
Bedroom 2	3.64m x 3.37m	11'11" x 11'1"	
Balcony	7.0 sq m	75 sq ft	



**Disclaimer:** All plans and images contained in this brochure are indicative only and must not be relied upon as being a true or accurate depiction of the relevant scene or area. Specifications, including measurements, dimensions, sizes and distances are approximate only and subject to change at any time without notice. Please note that the units come in different sizes and configurations depending on location within the building.

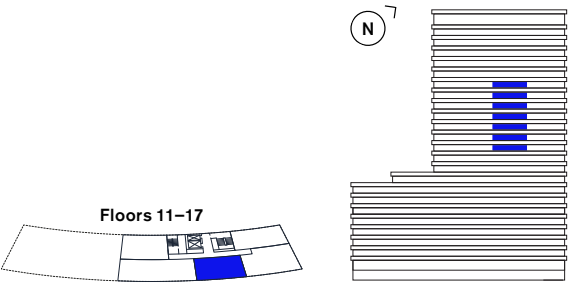


**Key**  
ST – Storage  
W/D – Washer/Dryer  
F/F – Fridge freezer

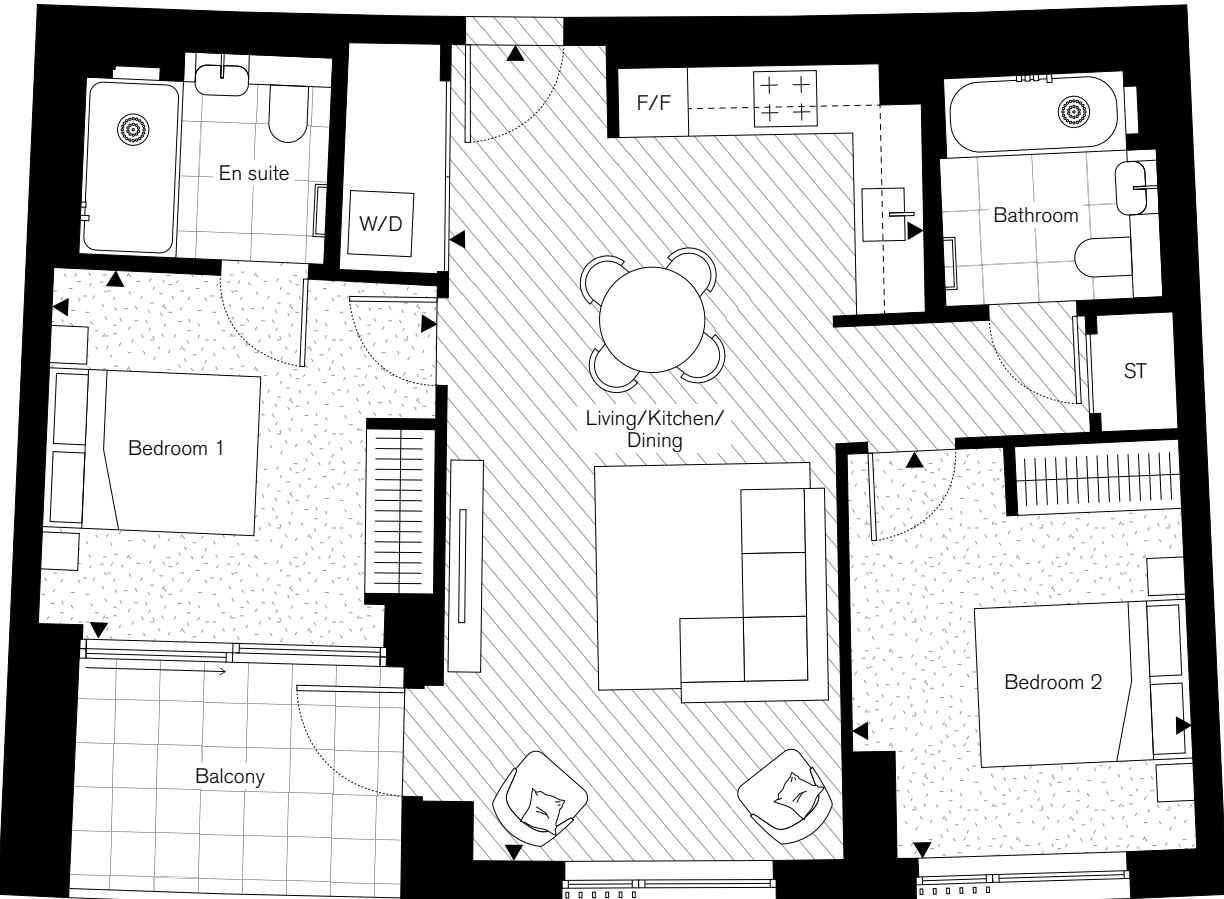
# 2 Bedroom

## Type 9

Floors			
11, 12, 13, 14, 15, 16, 17			
Apartments			
1103, 1203, 1303, 1403, 1503, 1603, 1703			
Net Sales Area (NSA)	74.6 sq m	803 sq ft	
Living/Kitchen/Dining	7.71m x 4.47m	25'4" x 14'8"	
Bedroom 1	3.64m x 3.48m	11'11" x 11'5"	
Bedroom 2	3.84m x 3.21m	12'7" x 10'6"	
Balcony	6.8 sq m	73 sq ft	



**Disclaimer:** All plans and images contained in this brochure are indicative only and must not be relied upon as being a true or accurate depiction of the relevant scene or area. Specifications, including measurements, dimensions, sizes and distances are approximate only and subject to change at any time without notice. Please note that the units come in different sizes and configurations depending on location within the building.



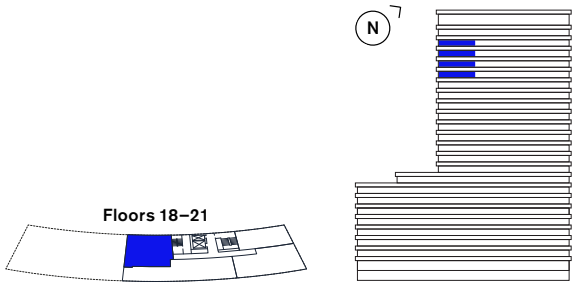
**Key**  
ST – Storage  
W/D – Washer/Dryer  
F/F – Fridge freezer



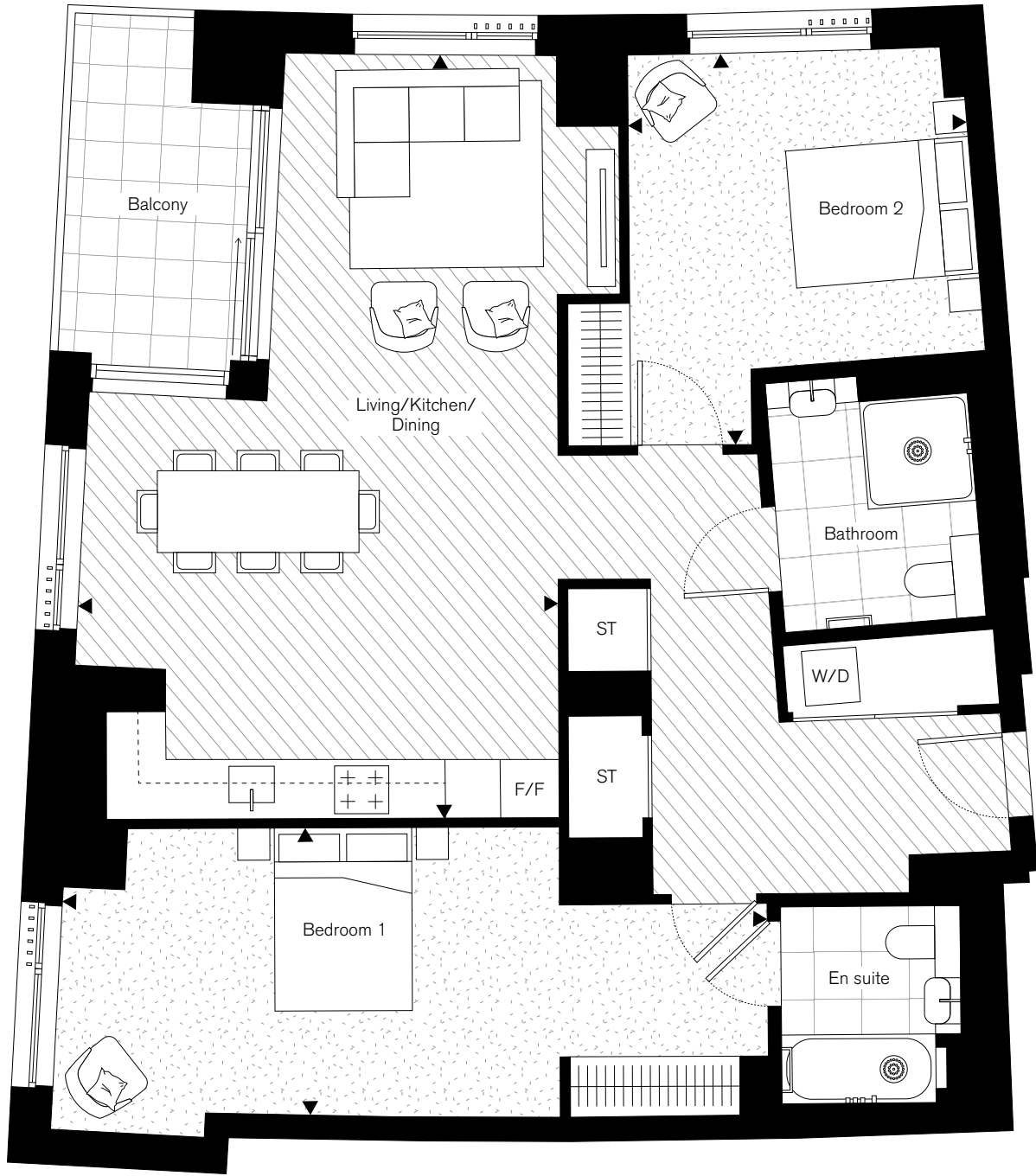
2 Bedroom

Type 10 (Wheelchair adaptable)

Floors			
18, 19, 20, 21			
Apartments			
1804, 1904, 2004, 2104			
Net Sales Area (NSA)	108.7 sq m	1,170 sq ft	
Living/Kitchen/Dining	8.33m x 5.23m	27'4" x 17'2"	
Bedroom 1	7.70m x 3.14m	25'3" x 10'4"	
Bedroom 2	4.27m x 3.72m	14'0" x 12'2"	
Balcony	7.0 sq m	75 sq ft	



**Disclaimer:** All plans and images contained in this brochure are indicative only and must not be relied upon as being a true or accurate depiction of the relevant scene or area. Specifications, including measurements, dimensions, sizes and distances are approximate only and subject to change at any time without notice. Please note that the units come in different sizes and configurations depending on location within the building.



**Key**  
ST – Storage  
W/D – Washer/Dryer  
F/F – Fridge freezer

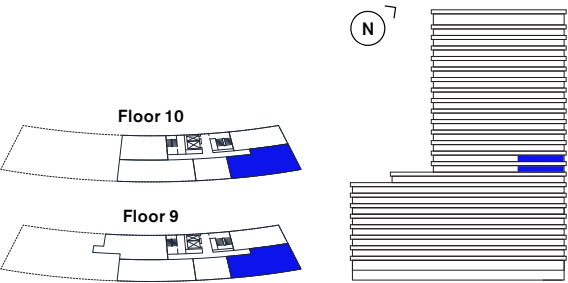
3 Bedroom

Apartments

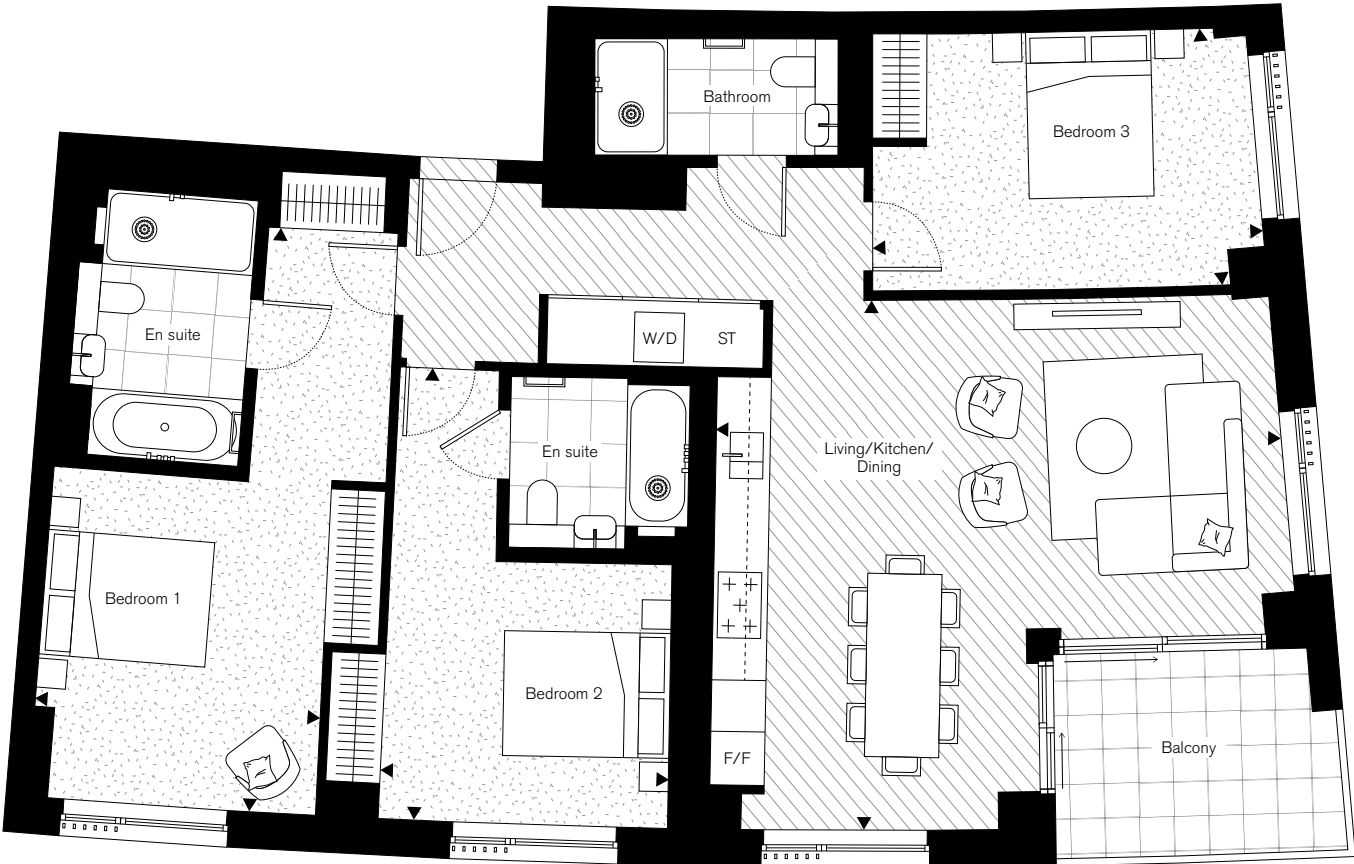
# 3 Bedroom

## Type 1

Floors			
9, 10			
Apartments			
902, 1002			
Net Sales Area (NSA)	122.2 sq m	1,315 sq ft	
Living/Kitchen/Dining	6.79m x 6.37m	22'3" x 20'11"	
Bedroom 1	7.03m x 3.44m	23'1" x 11'3"	
Bedroom 2	5.44m x 3.47m	17'10" x 11'5"	
Bedroom 3	4.69m x 3.09m	15'5" x 10'2"	
Balcony	8.2 sq m	88 sq ft	



**Disclaimer:** All plans and images contained in this brochure are indicative only and must not be relied upon as being a true or accurate depiction of the relevant scene or area. Specifications, including measurements, dimensions, sizes and distances are approximate only and subject to change at any time without notice. Please note that the units come in different sizes and configurations depending on location within the building.

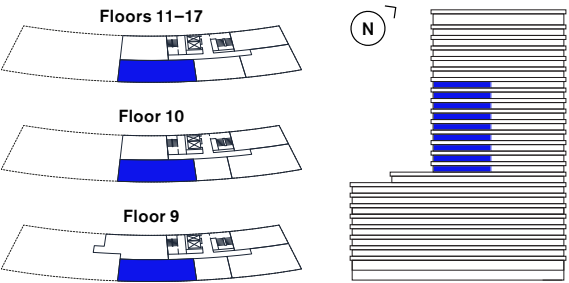


**Key**  
ST – Storage  
W/D – Washer/Dryer  
F/F – Fridge freezer

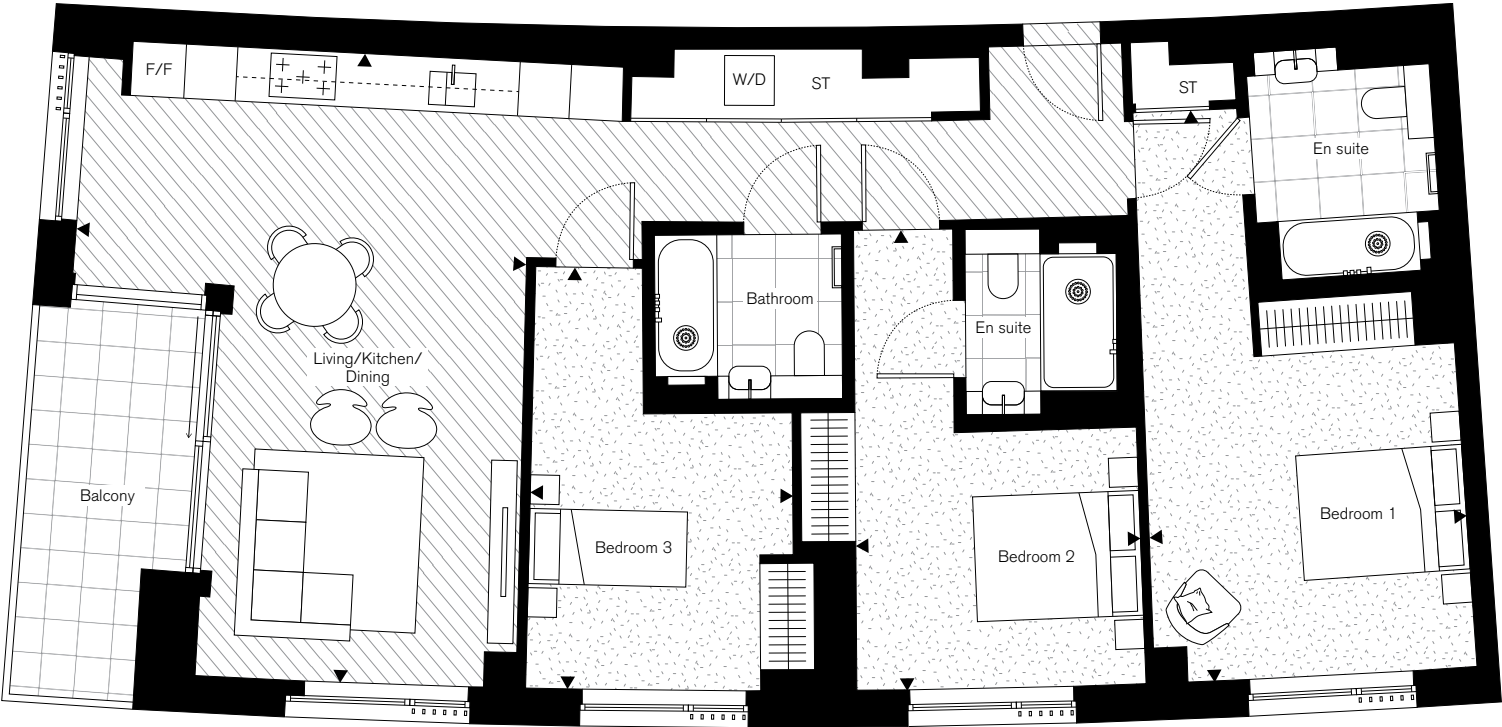
# 3 Bedroom

## Type 2 (Wheelchair adaptable)

Floors			
9, 10, 11, 12, 13, 14, 15, 16, 17			
Apartments			
904, 1004, 1104, 1204, 1304, 1404, 1504, 1604, 1704			
Net Sales Area (NSA)	120.1 sq m	1,293 sq ft	
Living/Kitchen/Dining	7.56m x 5.42m	24'10" x 17'9"	
Bedroom 1	6.86m x 3.83m	22'6" x 12'7"	
Bedroom 2	5.53m x 3.42m	18'2" x 11'3"	
Bedroom 3	5.07m x 3.18m	16'8" x 10'5"	
Balcony	8.7 sq m	94 sq ft	



**Disclaimer:** All plans and images contained in this brochure are indicative only and must not be relied upon as being a true or accurate depiction of the relevant scene or area. Specifications, including measurements, dimensions, sizes and distances are approximate only and subject to change at any time without notice. Please note that the units come in different sizes and configurations depending on location within the building.



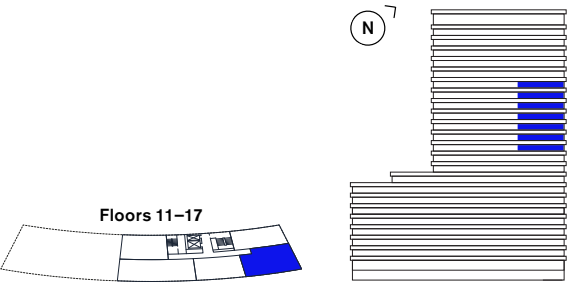
**Key**  
ST – Storage  
W/D – Washer/Dryer  
F/F – Fridge freezer



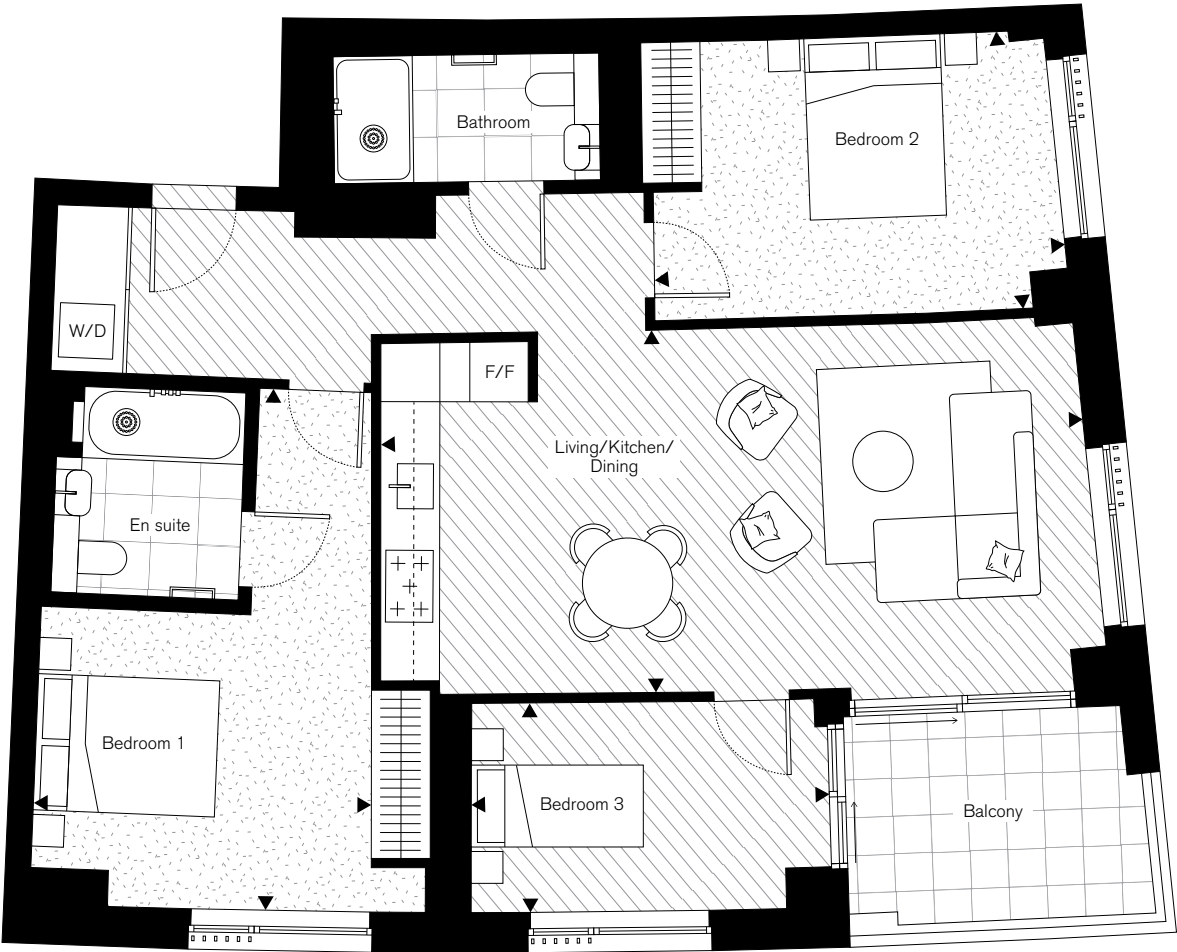
# 3 Bedroom

## Type 3

Floors		
11, 12, 13, 14, 15, 16, 17		
Apartments		
1102, 1202, 1302, 1402, 1502, 1602, 1702		
Net Sales Area (NSA)	97.2 sq m	1,046 sq ft
Living/Kitchen/Dining	7.74m x 4.00m	25'5" x 13'1"
Bedroom 1	5.75m x 3.71m	18'10" x 12'2"
Bedroom 2	4.53m x 3.07m	14'10" x 10'1"
Bedroom 3	3.95m x 2.30m	12'12" x 7'7"
Balcony	8.2 sq m	88 sq ft

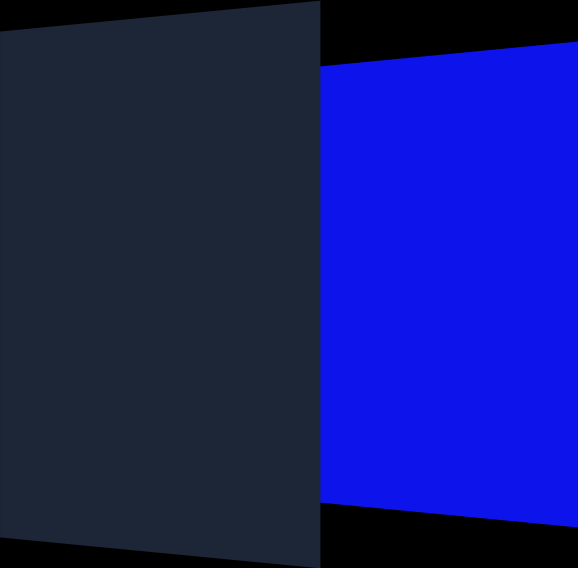


**Disclaimer:** All plans and images contained in this brochure are indicative only and must not be relied upon as being a true or accurate depiction of the relevant scene or area. Specifications, including measurements, dimensions, sizes and distances are approximate only and subject to change at any time without notice. Please note that the units come in different sizes and configurations depending on location within the building.



**Key**  
ST – Storage  
W/D – Washer/Dryer  
F/F – Fridge freezer

Premium

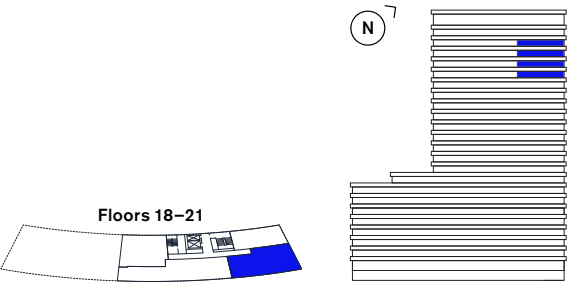


Apartments

# 3 Bedroom

## Type 1

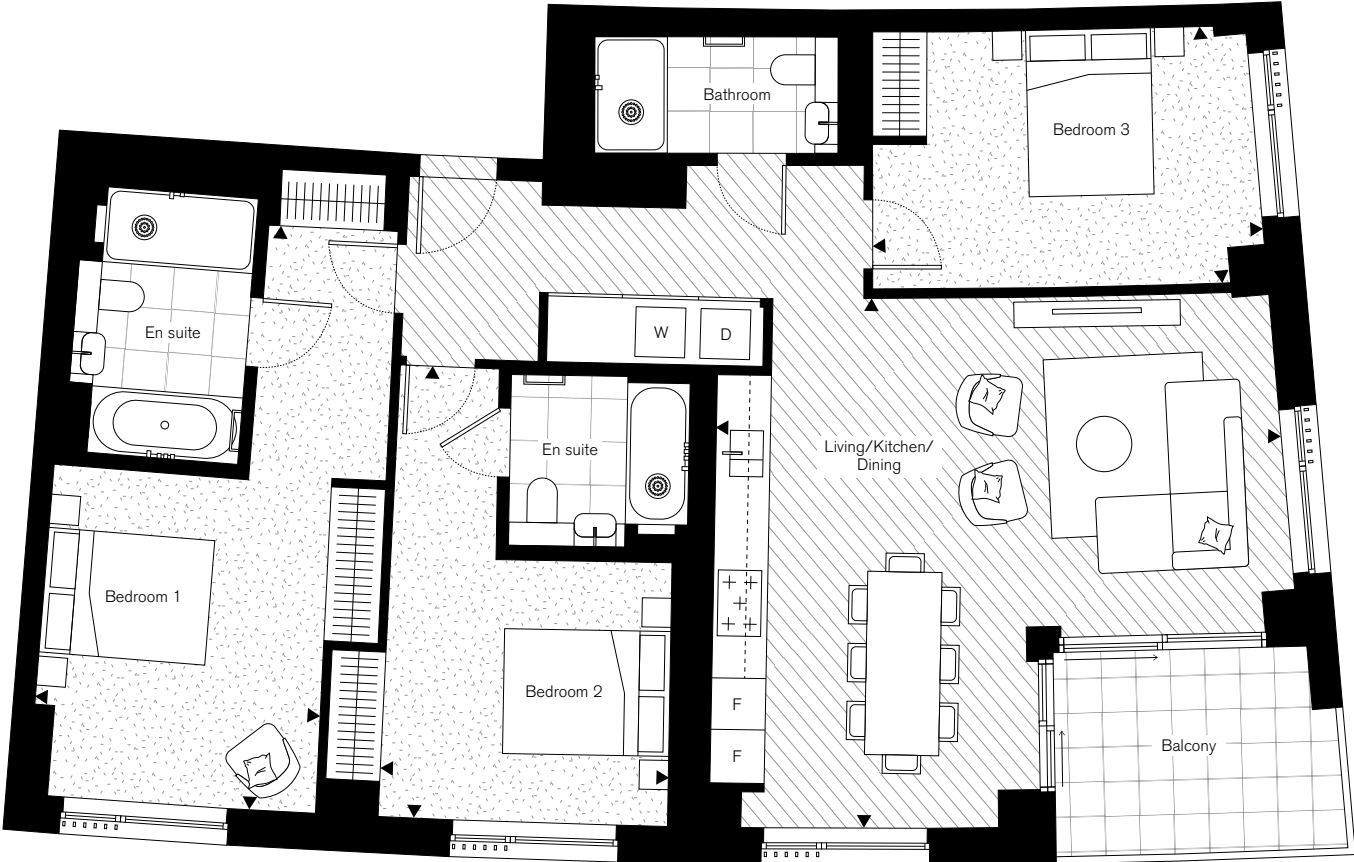
Floors			
18, 19, 20, 21			
Apartments			
1802, 1902, 2002, 2102			
Net Sales Area (NSA)	122.2 sq m	1,315 sq ft	
Living/Kitchen/Dining	6.79m x 6.37m	22'3" x 20'11"	
Bedroom 1	7.03m x 3.44m	23'1" x 11'3"	
Bedroom 2	5.44m x 3.47m	17'10" x 11'5"	
Bedroom 3	4.69m x 3.09m	15'5" x 10'2"	
Balcony	8.2 sq m	88 sq ft	



**Disclaimer:** All plans and images contained in this brochure are indicative only and must not be relied upon as being a true or accurate depiction of the relevant scene or area. Specifications, including measurements, dimensions, sizes and distances are approximate only and subject to change at any time without notice. Please note that the units come in different sizes and configurations depending on location within the building.

### Key

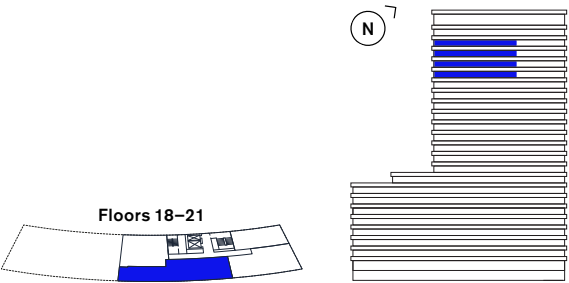
- ST – Storage
- W – Washing machine
- D – Tumble dryer
- F – Fridge
- F – Freezer



# 3 Bedroom

## Type 4 (Wheelchair adaptable)

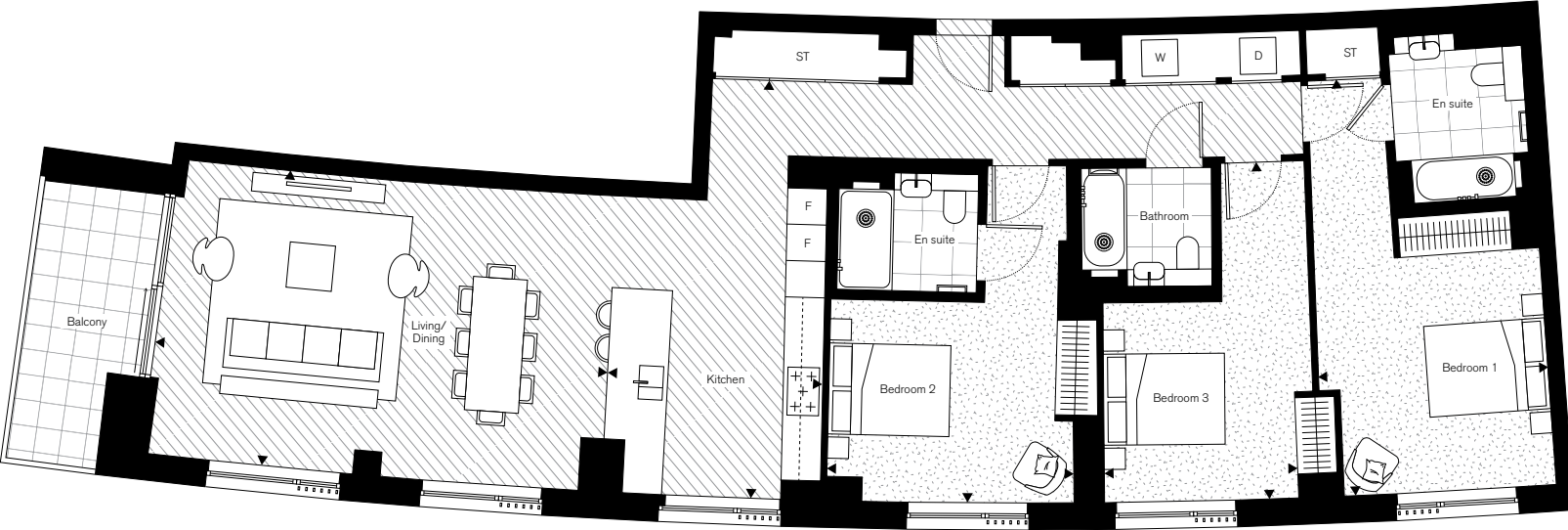
Floors			
18, 19, 20, 21			
Apartments			
1803, 1903, 2003, 2103			
Net Sales Area (NSA)	149.8 sq m	1,612 sq ft	
Kitchen	6.90m x 3.55m	22'8" x 11'8"	
Living/Dining	7.47m x 4.88m	24'6" x 16'0"	
Bedroom 1	6.88m x 3.80m	22'7" x 12'6"	
Bedroom 2	5.53m x 3.19m	18'2" x 10'6"	
Bedroom 3	5.56m x 4.08m	18'3" x 13'5"	
Balcony	8.5 sq m	91 sq ft	



**Disclaimer:** All plans and images contained in this brochure are indicative only and must not be relied upon as being a true or accurate depiction of the relevant scene or area. Specifications, including measurements, dimensions, sizes and distances are approximate only and subject to change at any time without notice. Please note that the units come in different sizes and configurations depending on location within the building.

### Key

- ST – Storage
- W – Washing machine
- D – Tumble dryer
- F – Fridge
- F – Freezer

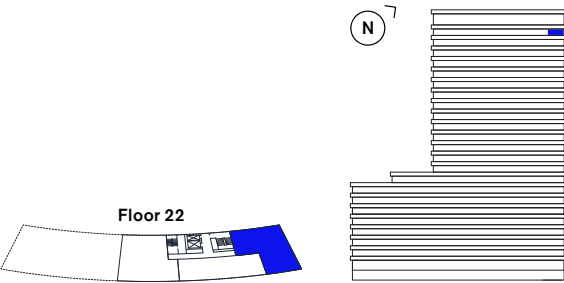




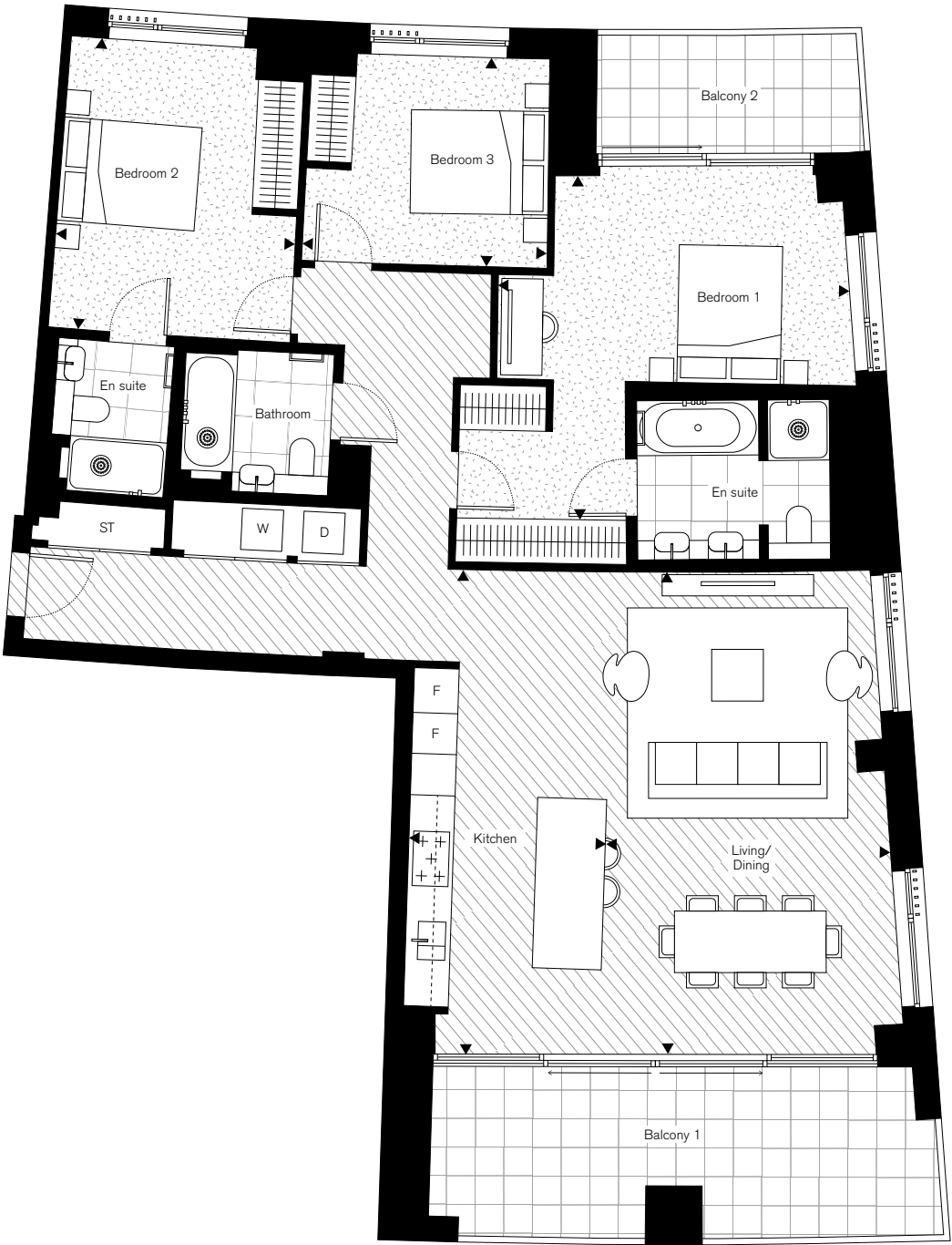
# 3 Bedroom

## Type 5

Floor		
22		
Apartment		
2201		
Net Sales Area (NSA)	135.7 sq m	1,461 sq ft
Kitchen	7.02m x 2.83m	23'0" x 9'3"
Living/Dining	6.99m x 4.14m	22'11" x 13'7"
Bedroom 1	5.08m x 4.99m	16'8" x 16'4"
Bedroom 2	4.23m x 3.48m	13'11" x 11'5"
Bedroom 3	3.54m x 3.03m	11'7" x 9'11"
Balcony 1	17.3 sq m	186 sq ft
Balcony 2	6.6 sq m	71 sq ft



**Disclaimer:** All plans and images contained in this brochure are indicative only and must not be relied upon as being a true or accurate depiction of the relevant scene or area. Specifications, including measurements, dimensions, sizes and distances are approximate only and subject to change at any time without notice. Please note that the units come in different sizes and configurations depending on location within the building.

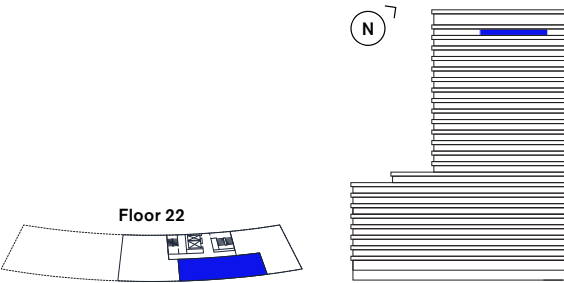


**Key**  
ST – Storage  
W – Washing machine  
D – Tumble dryer  
F – Fridge  
F – Freezer

# 3 Bedroom

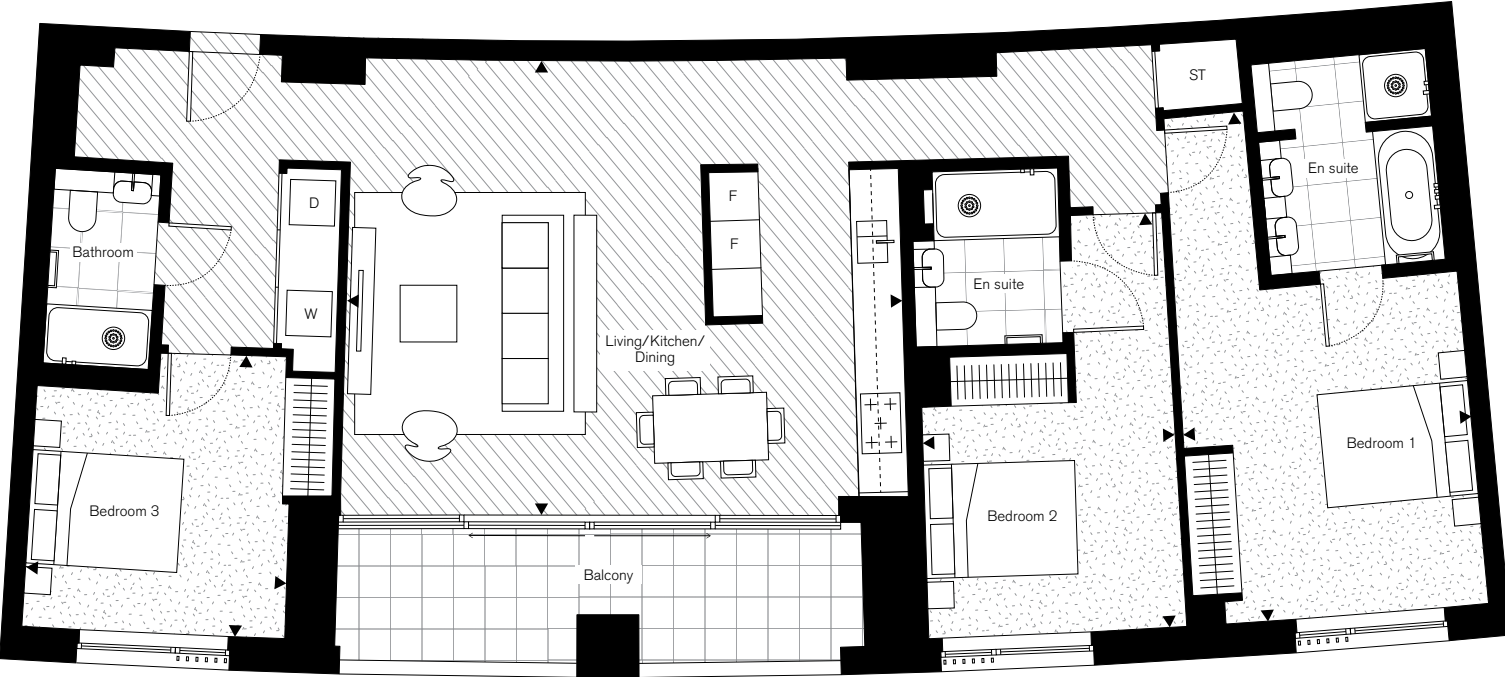
## Type 6

Floor		
22		
Apartment		
2202		
Net Sales Area (NSA)	130.3 sq m	1,403 sq ft
Living/Kitchen/Dining	5.97m x 7.15m	19'7" x 23'5"
Bedroom 1	6.74m x 3.82m	22'1" x 12'6"
Bedroom 2	5.49m x 3.34m	18'0" x 10'11"
Bedroom 3	3.79m x 3.45m	12'5" x 11'4"
Balcony	11.7 sq m	126 sq ft



**Disclaimer:** All plans and images contained in this brochure are indicative only and must not be relied upon as being a true or accurate depiction of the relevant scene or area. Specifications, including measurements, dimensions, sizes and distances are approximate only and subject to change at any time without notice. Please note that the units come in different sizes and configurations depending on location within the building.

**Key**  
ST – Storage  
W – Washing machine  
D – Tumble dryer  
F – Fridge  
F – Freezer



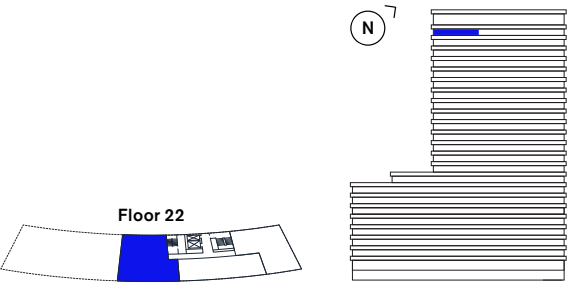
# 3 Bedroom

## Type 7

Floor		
22		
Apartment		
2203		
Net Sales Area (NSA)	161.2 sq m	1,735 sq ft
Kitchen	5.31m x 2.83m	17'5" x 9'3"
Living/Dining	9.53m x 5.85m	31'3" x 19'2"
Bedroom 1	6.96m x 3.56m	22'10" x 11'8"
Bedroom 2	4.12m x 3.35m	13'6" x 11'0"
Bedroom 3	4.26m x 3.31m	14'0" x 10'10"
Balcony 1	21.1 sq m	227 sq ft
Balcony 2	6.8 sq m	73 sq ft



- Key**
- ST – Storage
  - W – Washing machine
  - D – Tumble dryer
  - F – Fridge
  - F – Freezer



**Disclaimer:** All plans and images contained in this brochure are indicative only and must not be relied upon as being a true or accurate depiction of the relevant scene or area. Specifications, including measurements, dimensions, sizes and distances are approximate only and subject to change at any time without notice. Please note that the units come in different sizes and configurations depending on location within the building.

# Penthouse

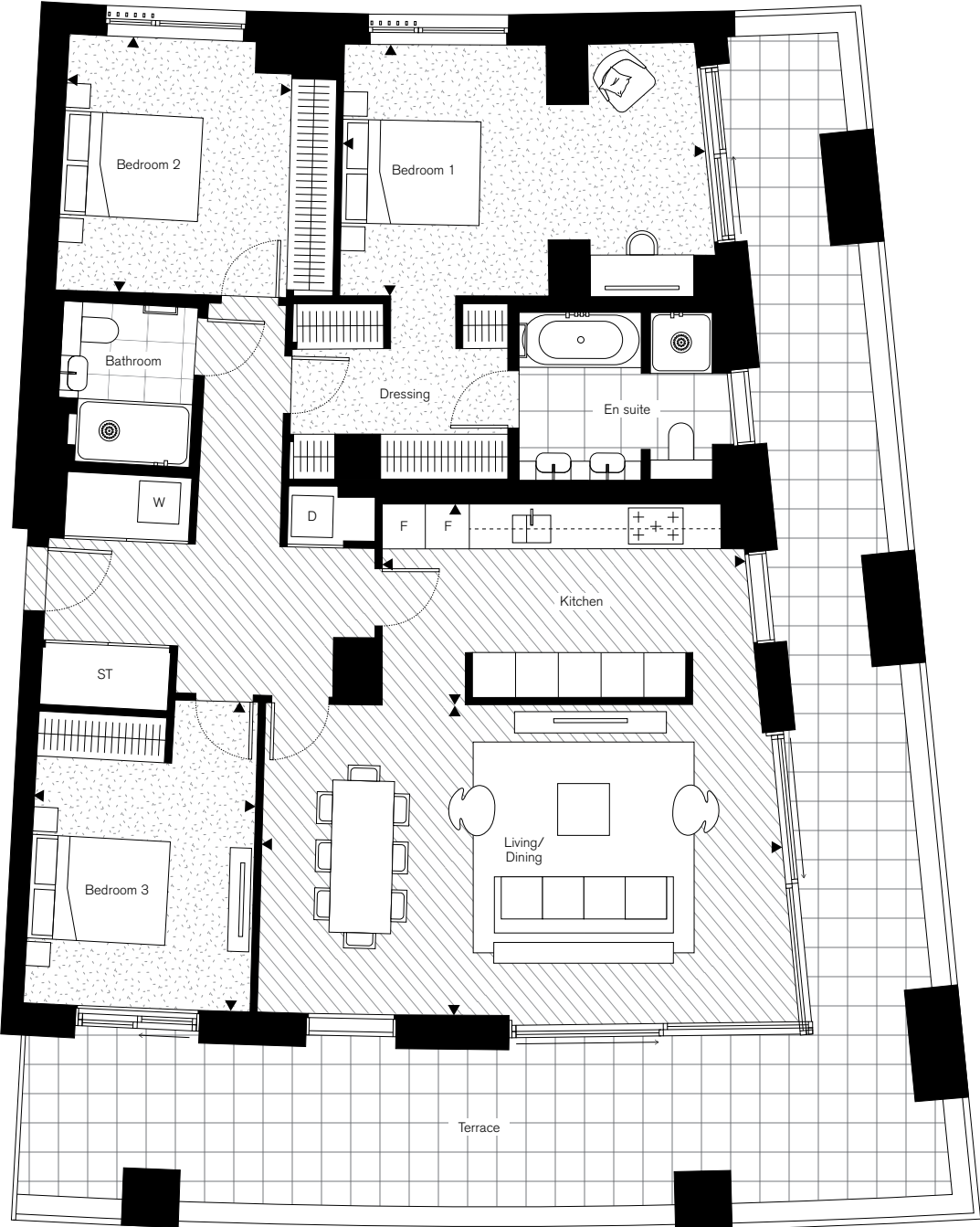
Apartments



3 Bedroom Penthouse

Type 1

Floor		
23		
Apartment		
2301		
Net Sales Area (NSA)	142.8 sq m	1,537 sq ft
Kitchen	5.36m x 2.92m	17'7" x 9'7"
Living/Dining	7.49m x 4.49m	24'7" x 14'9"
Bedroom 1	5.25m x 3.64m	17'3" x 11'1"
Bedroom 2	4.48m x 3.21m	14'8" x 10'6"
Bedroom 3	3.69m x 3.25m	12'1" x 10'8"
Terrace	61.8 sq m	665 sq ft



Key

- ST – Storage
- W – Washing machine
- D – Tumble dryer
- F – Fridge
- F – Freezer

**Disclaimer:** All plans and images contained in this brochure are indicative only and must not be relied upon as being a true or accurate depiction of the relevant scene or area. Specifications, including measurements, dimensions, sizes and distances are approximate only and subject to change at any time without notice. Please note that the units come in different sizes and configurations depending on location within the building.

3 Bedroom Penthouse

Type 2

Floor		
23		
Apartment		
2302		
Net Sales Area (NSA)	190.3 sq m	2,048 sq ft
Kitchen	4.94m x 3.81m	16'2" x 12'6"
Living/Dining	8.80m x 5.02m	28'10" x 16'6"
Bedroom 1	7.64m x 5.68m	25'1" x 18'8"
Bedroom 2	4.96m x 3.15m	16'3" x 10'4"
Bedroom 3	3.55m x 3.35m	11'8" x 10'2"
Study	3.41m x 3.14m	11'2" x 10'4"
Terrace	100.6 sq m	1,083 sq ft



Key

- ST – Storage
- W – Washing machine
- D – Tumble dryer
- F – Fridge
- F – Freezer

**Disclaimer:** All plans and images contained in this brochure are indicative only and must not be relied upon as being a true or accurate depiction of the relevant scene or area. Specifications, including measurements, dimensions, sizes and distances are approximate only and subject to change at any time without notice. Please note that the units come in different sizes and configurations depending on location within the building.





*At a glance*



Kitchen



Bathroom

Lutron smart lighting system

Combined heating & comfort cooling

Engineered timber flooring

Fitted wardrobes

Italian kitchens

Siemens & AEG appliances

Terrazzo tiled bathroom vanity

Brushed nickel sanitaryware



# Standard apartments

## Floor to ceiling height

- Maximum 2.65m clear floor to ceiling height (2.4m in hallways and bathrooms)

## Flooring

- Engineered timber flooring to entrance, living area and hallway
- Carpet to bedrooms

## Doors

- Full-height solid core timber entrance door and panel
- Solid core white painted internal doors
- Brushed steel ironmongery

## Decoration

- Painted finish to internal walls, ceiling, skirting and door frames
- Recess for curtains/blinds in living area and bedrooms

## Kitchen

- European kitchen units
- Handleless base units with matt lacquer finish doors, internal shelves and cutlery drawer insert. Upper units with timber veneered doors and frame detail, internal shelves
- Timber veneered open shelving
- Composite stone worktop
- Full height tiled splashback
- Under-mounted stainless steel sink and brushed stainless steel deck mounted mixer tap
- Combined waste/recycling bins to lower base unit (under sink unit)
- Linear LED lighting below kitchen wall units

## Kitchen appliances

*(integrated unless otherwise stated)*

### Studios

- Siemens (or equivalent) under counter fridge with freezer compartment
- Siemens (or equivalent) single oven
- Siemens (or equivalent) 4-ring induction hob
- Siemens (or equivalent) extractor
- Siemens (or equivalent) dishwasher
- Freestanding AEG (or equivalent) combined washing machine/tumble dryer (in utility cupboard)

### 1, 2 & 3 Beds

- Siemens (or equivalent) fridge/freezer
- Siemens (or equivalent) multifunction oven
- Siemens (or equivalent) 4-ring induction hob (5-ring in 3 bed apartments)
- Siemens (or equivalent) microwave (2 & 3 bed apartments)
- Siemens (or equivalent) extractor
- Siemens (or equivalent) dishwasher
- Freestanding AEG (or equivalent) combined washing machine/tumble dryer (in utility cupboard)
- Wine fridge (2 & 3 bed apartments)

## Wardrobes

- Fitted wardrobes with matt lacquer doors (ribbed centre panel to master bedrooms), textured interiors with hat shelf and hanging rail
- Vertical LED lighting to master bedroom wardrobe interiors

## Balconies

- Inset balcony with part-solid and part-metal railings (where applicable)

## Bathrooms

- Ceramic wall tiles to selected walls
- Terrazzo style tiled feature vanity unit
- Porcelain floor tiles
- Bespoke wall-mounted cabinet, mirrored cupboard with demister pad, internal shelving, shaver socket and timber veneered open shelving
- Electric heated towel rail
- Inset white ceramic basin with wall-mounted mixer tap in brushed nickel
- White ceramic wall-mounted WC
- 2-button flush plate in brushed stainless steel
- White enamelled steel bath with glazed shower screen, fixed shower head, wall mounted thermostatic mixer and hand shower in brushed nickel
- Glazed shower enclosure with white shower tray, fixed shower head, wall mounted thermostatic mixer and hand shower in brushed nickel (ensuite bathrooms in 2 & 3 bedroom units only, where applicable)

## Heating, cooling & ventilation

- Energy centre providing metered hot water and heating to all apartments
- Combined heating and comfort cooling provided to habitable rooms
- Thermostatic control to habitable rooms
- Underfloor heating to bathrooms
- Heated towel rail to bathrooms
- MVHR ventilation unit in utility cupboard

## Lighting

- Lutron smart lighting system
- Remote and mobile control (via Lutron App) with dimmer function, where appropriate
- Energy efficient downlighters
- LED feature lighting bathrooms
- Provision for future installation of pendant fitting over kitchen peninsula and island units (where applicable)

## Power, AV, data and telephone systems

- Power sockets with white faceplates throughout; integrated USB ports to kitchen and bedrooms
- Television, telephone and data points to reception room, master bedrooms and study areas (where applicable)
- Video entry system linked to concierge
- High speed internet connection and satellite connection for television (purchasers are responsible for their own connections and related costs), comprising:
  - Provision for Astra (Sky TV) or terrestrial television (Freeview)
  - Infrastructure for Hyperoptic, Openreach and Virgin Media

For Premium and Penthouse specifications please contact the appointed sales agents.





# Contact Us

Marketing Suite

5 Television Centre  
101 Wood Lane  
London W12 7FW

+44 (0)20 3005 3960

televisioncentre.com



Developer



Development Manager



Sales Agents



**Important notice:** Savills, Knight Frank and their clients give notice that: 1. They are not authorised to make or give any representations or warranties in relation to the property either here or elsewhere, either on their own behalf or on behalf of their client or otherwise. They assume no responsibility for any statement that may be made in these particulars. These particulars do not form part of any offer or contract and must not be relied upon as statements or representations of fact. 2. Any areas, measurements or distances are approximate. The text, computer generated image, drawings, specifications and plans are for guidance only and are not necessarily comprehensive. It should not be assumed that the property has all necessary planning, building regulation or other consents and we have not tested any services, equipment or facilities. Purchasers must satisfy themselves by inspection or otherwise. 3. These particulars were prepared from preliminary plans and specifications before the completion of the properties. These particulars, together with any images that they contain, are intended only as a guide. They may have been changed during construction and final finishes could vary. Prospective purchasers should not rely on this information but must get their solicitor to check the plans and specification attached to their contract. 4. Financial Crime: In accordance with the Money Laundering, Terrorist Financing and Transfer of Funds (Information on the Payer) Regulations 2017 and Proceeds of Crime Act 2002, we may be required to establish the identity and source of funds of all parties to property transactions. November 2025.



televisioncentre.com